

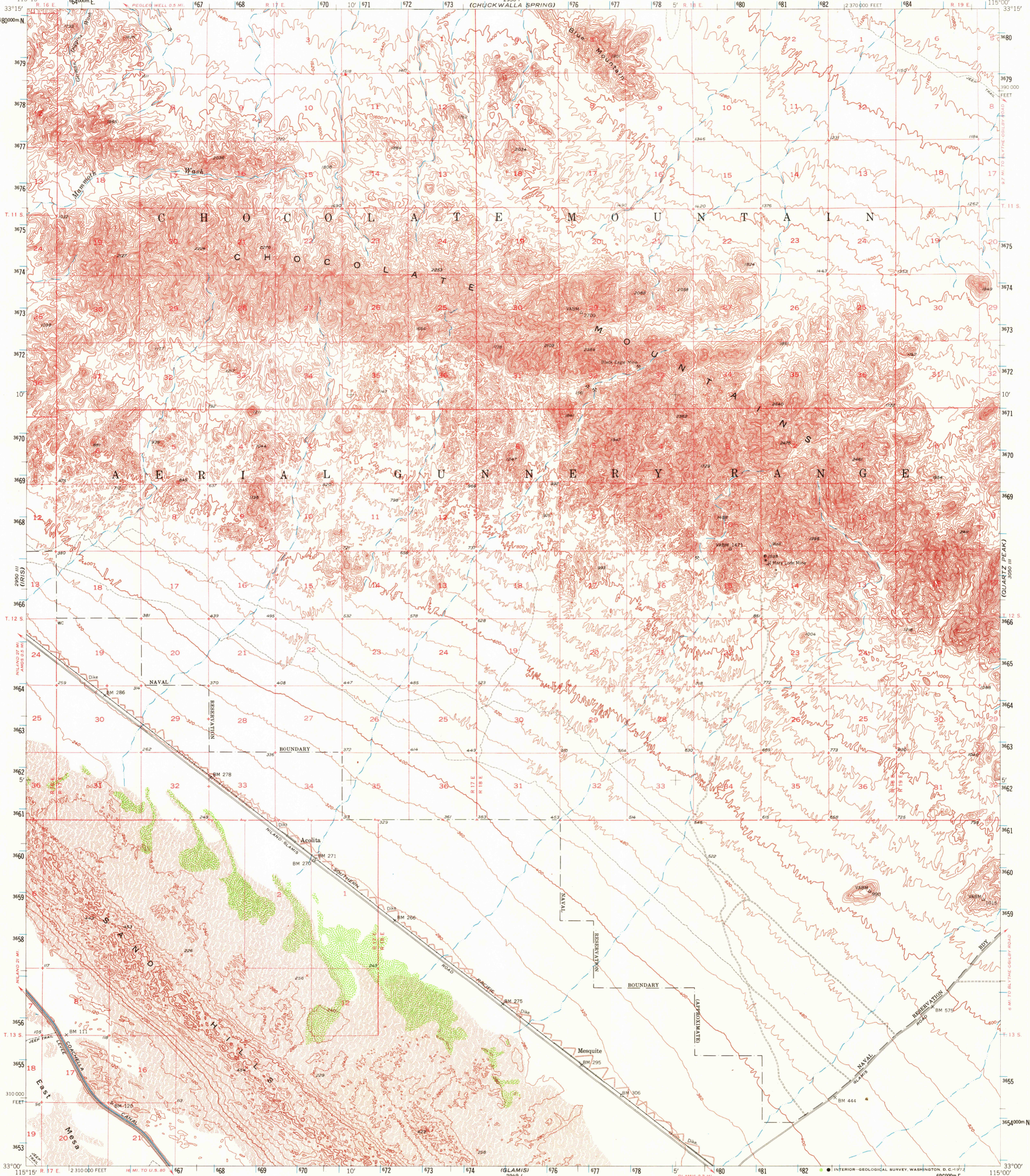
2999 IV
(R/S PASS)

3099 IV
(PALO VERDE MTS)

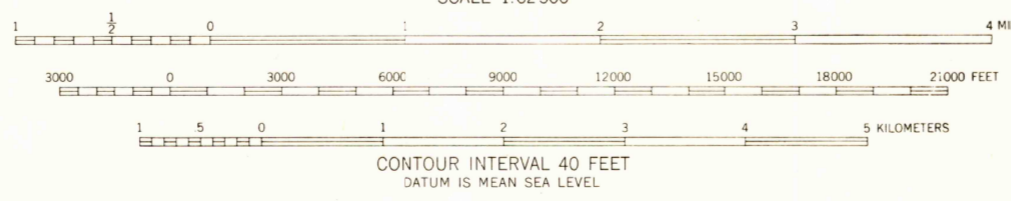
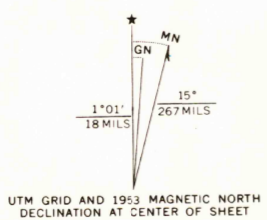
UNITED STATES
DEPARTMENT OF THE INTERIOR
GEOLOGICAL SURVEY

STATE OF CALIFORNIA
DEPARTMENT OF WATER RESOURCES
(CHUCKWALLA SPRING)

ACOLITA QUADRANGLE
CALIFORNIA—IMPERIAL CO.
15 MINUTE SERIES (TOPOGRAPHIC)



Mapped, edited, and published by the Geological Survey
Control by USGS, USC&GS, USBR, and USCE
Topography from plane-table surveys by USBR 1936-7
and by USGS from aerial photographs by multiplex methods
Aerial photographs taken 1948. Field check 1953
Polyconic projection, 1927 North American datum
10,000-foot grid based on California coordinate system, zone 6
Certain land lines are omitted because of insufficient data
1000-meter Universal Transverse Mercator grid ticks,
zone 11, shown in blue



ROAD CLASSIFICATION
1963
Light-duty ————
Unimproved dirt - - - - -

USGS
Historical File
Topographic Division

The south-west quarter of this area is also
covered by 1:24,000 scale map of the
Acolita 7.5 minute quadrangle, surveyed in 1953

ACOLITA, CALIF. AUG 9 1972
N3300-W11500/15
1953
AMS 2950 II—SERIES V795

THIS MAP COMPLIES WITH NATIONAL MAP ACCURACY STANDARDS
FOR SALE BY U. S. GEOLOGICAL SURVEY, DENVER, COLORADO 80225 OR WASHINGTON, D. C. 20242
A FOLDER DESCRIBING TOPOGRAPHIC MAPS AND SYMBOLS IS AVAILABLE ON REQUEST

470