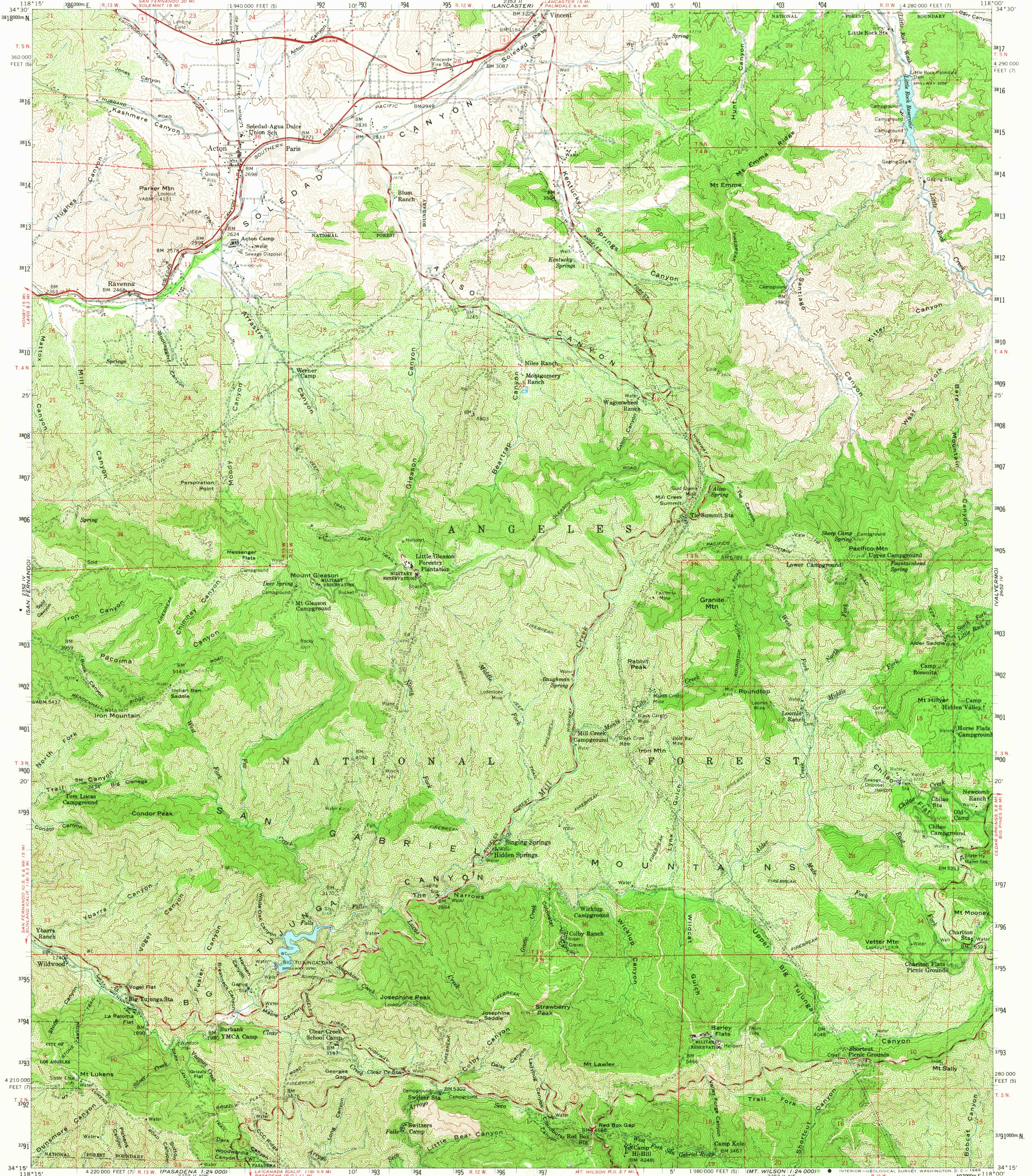


UNITED STATES
DEPARTMENT OF THE INTERIOR
GEOLOGICAL SURVEY

ACTON QUADRANGLE
CALIFORNIA—LOS ANGELES CO.
15 MINUTE SERIES (TOPOGRAPHIC)



Mapped, edited, and published by the Geological Survey
Control by USGS, USC&GS, U. S. Forest Service, and Los Angeles Co.
Compiled in 1961 from 1:24 000-scale maps of Pacific Mountain,
Acton, Condor Peak, and Chiao Flat 7.5 minute quadrangles,
surveyed 1959

Topography from aerial photographs by photogrammetric methods
Aerial photographs taken 1957

Polyconic projection. 1927 North American datum
10,000-foot grid based on California coordinate system, zones 7 and 5
1000-meter Universal Transverse Mercator grid ticks,
zone 11, shown in blue

Dashed land lines indicate approximate locations
Land lines surveyed in T. 4 N.—R. 11 W., and parts of
T. 2 N.—Rs. 11 and 12 W., T. 3 N.—Rs. 11, 12, and 13 W.,
and T. 4 N.—R. 12 W.

SCALE 1:62,500

0 1 2 3 4 MILES
0 3000 6000 9000 12000 15000 18000 21000 FEET
0 1 2 3 4 5 KILOMETERS

CONTOUR INTERVAL 80 FEET
DATUM IS MEAN SEA LEVEL

UTM GRID AND 1959 MAGNETIC NORTH
DECLINATION AT CENTER OF SHEET

THIS MAP COMPLIES WITH NATIONAL MAP ACCURACY STANDARDS
FOR SALE BY U. S. GEOLOGICAL SURVEY, DENVER, COLORADO 80225 OR WASHINGTON, D. C. 20242
A FOLDER DESCRIBING TOPOGRAPHIC MAPS AND SYMBOLS IS AVAILABLE ON REQUEST

USGS
Historical File
Topographic Division

ROAD CLASSIFICATION

Heavy-duty	Light-duty
Medium-duty	Unimproved dirt

U. S. Route State Route

U.S.G.S.
TOPOGRAPHIC DIVISION

AMS 2352 1—SERIES V795

ACTON, CALIF.
N3415—W11800/15
1959

OCT 18 1966
6855
OCT 18 1966