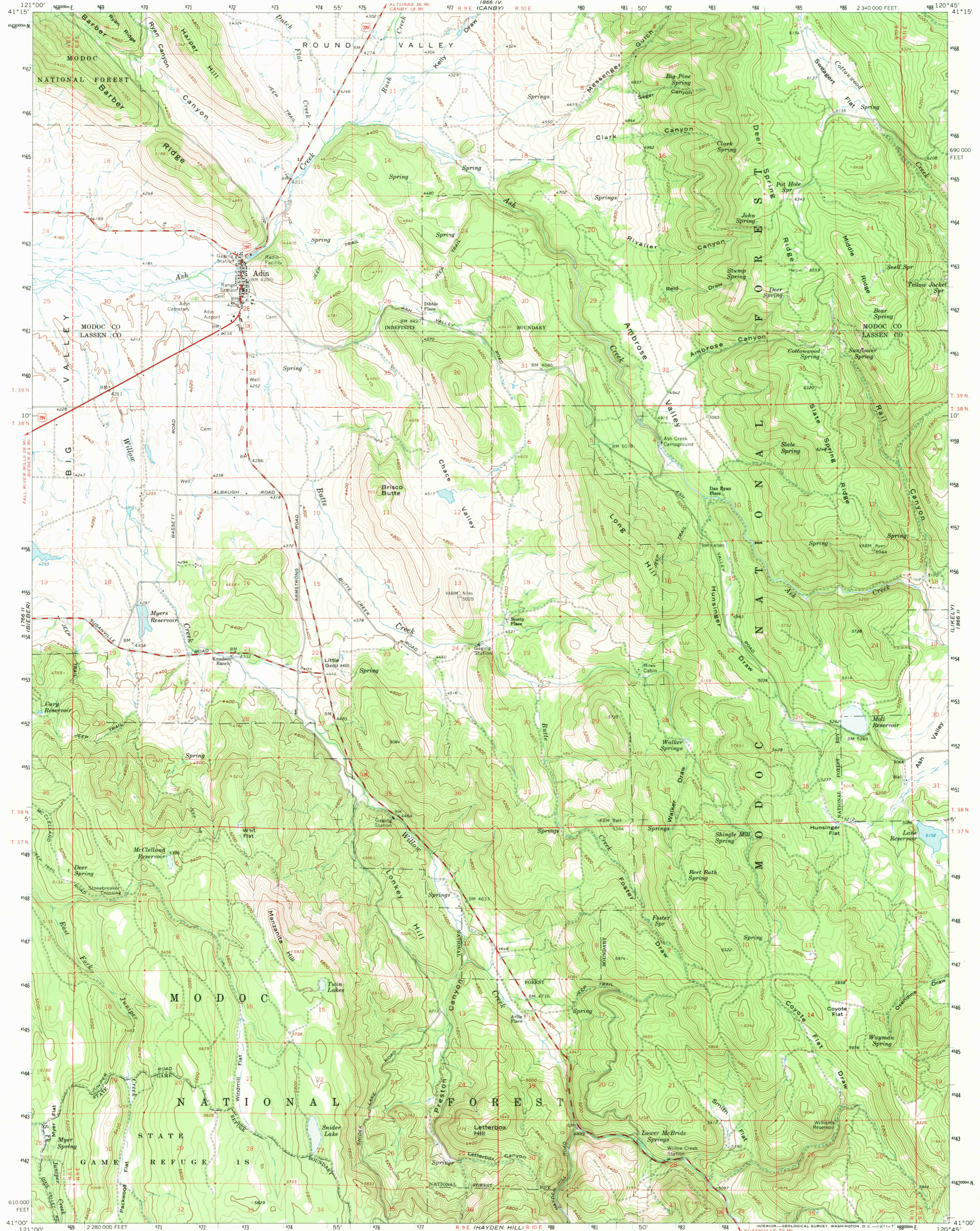


CRANK MOUNTAIN
1766 I
1765 I

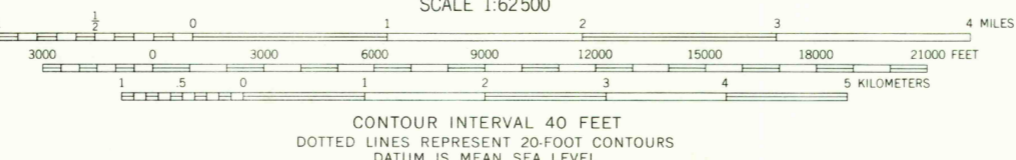
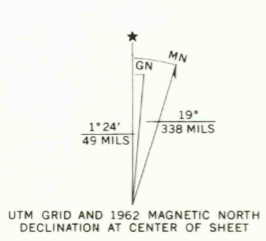
1866 I
1865 I
(LTPAS)

UNITED STATES
DEPARTMENT OF THE INTERIOR
GEOLOGICAL SURVEY

ADIN QUADRANGLE
CALIFORNIA
15 MINUTE SERIES (TOPOGRAPHIC)



Mapped, edited, and published by the Geological Survey
Control by USGS, USC&GS, and U.S. Forest Service
Topography by photogrammetric methods from aerial
photographs taken 1958 and planimetric surveys 1961-1962
Polyconic projection. 1927 North American datum
10,000-foot grid based on California coordinate system, zone 1
1000-meter Universal Transverse Mercator grid ticks,
zone 10, shown in blue



ROAD CLASSIFICATION

- Heavy-duty (thick solid line)
- Medium-duty (thin solid line)
- Light-duty (dashed line)
- Unimproved (dotted line)
- U.S. Route (red shield)
- State Route (white shield)

U.S.G.S. TOPOGRAPHIC DIVISION

QUADRANGLE LOCATION
ADIN, CALIF.
N4100-W12045/15
1962
AMS 1866 III—SERIES V795

THIS MAP COMPLIES WITH NATIONAL MAP ACCURACY STANDARDS
FOR SALE BY U.S. GEOLOGICAL SURVEY, DENVER, COLORADO 80225 OR WASHINGTON, D.C. 20242
A FOLDER DESCRIBING TOPOGRAPHIC MAPS AND SYMBOLS IS AVAILABLE ON REQUEST

JUN 28 1971
5735