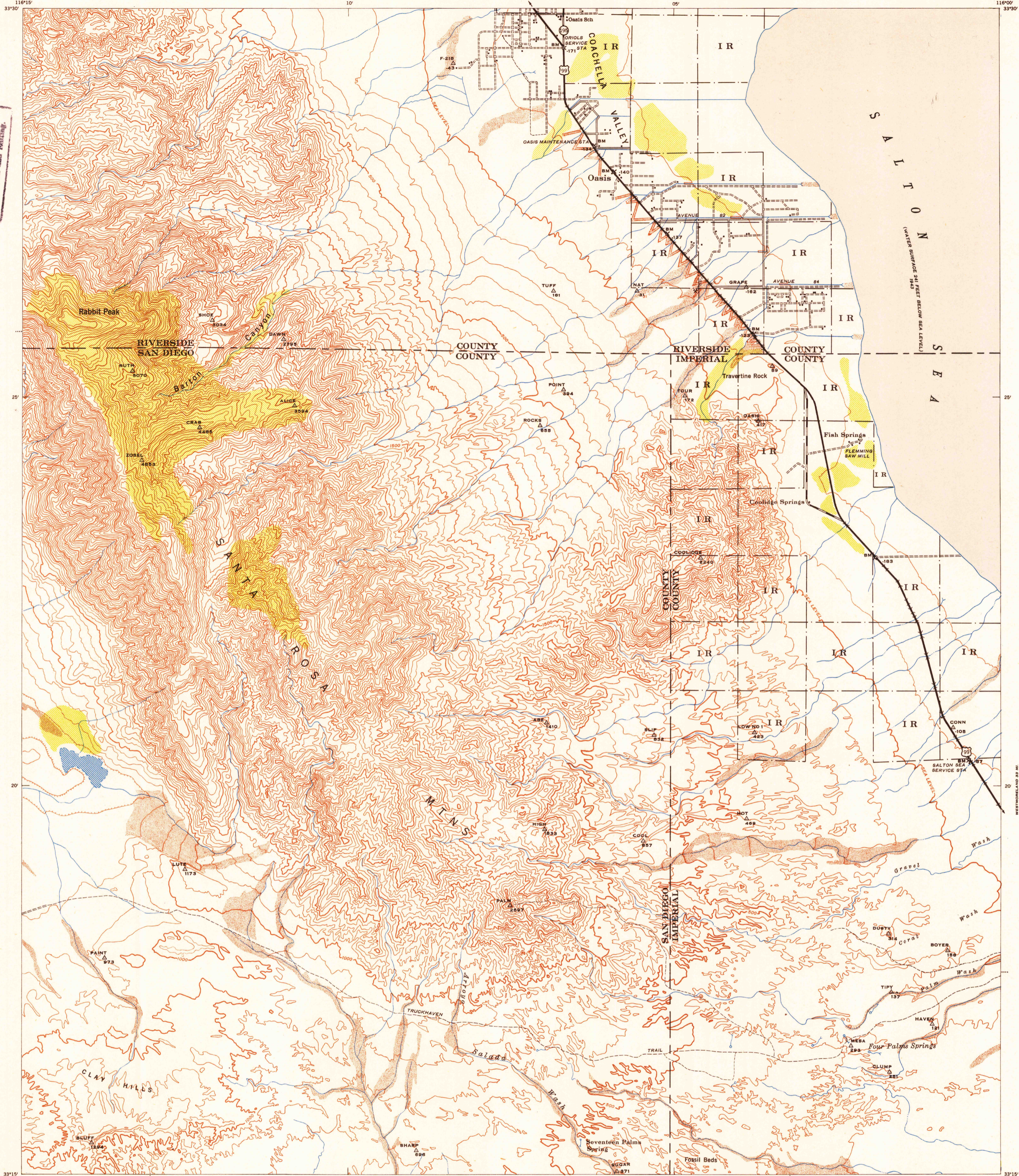
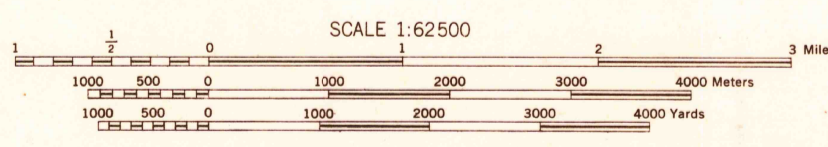


U.S.G.S.
FILE COPY
Inspection and Mailing



A.M.S. V795
First Edition (AMS 1), 1944; (AMS 2), 1947.
Prepared under the direction of the Chief of Engineers by the Army Map Service (AM), U.S. Army, Washington, D.C. Scale changed, marginal data revised and Universal Transverse Mercator Grid added, 1947. Copied in 1947 from California, 1:62,500, AMS, Agua Dulce, 1944. Original map compiled by stereophotogrammetric methods for the Army Map Service by the 29th Engineer Battalion, U.S. Army. Horizontal and vertical control by USCGAS and 29th Engineer Battalion, U.S. Army. Aerial photography by U.S. Army Air Force, 1941.



SCALE 1:62500
CONTOUR INTERVAL 100 FEET
DATUM IS MEAN SEA LEVEL (1929 ADJ.)
TRANSVERSE MERCATOR PROJECTION
1927 NORTH AMERICAN DATUM

TRUE NORTH
MAGNETIC NORTH
APPROXIMATE MEAN DECLINATION, 1947

LEGEND
ROAD DATA 1947

Hard surface, heavy duty road, more than two lanes wide	Loose surface, graded, dry weather road
Hard surface, heavy duty road, two lanes wide; Federal route marker	Trail; Dirt road
Secondary, hard surface, all weather road, two lanes wide; State route marker	Railroad in street; Carline in street
RAILROADS	UNDER CONSTRUCTION
Standard gauge	Single track
Narrow gauge	Double track
Single track carline	ABANDONED
Double track carline	Single track
BOUNDARIES	Double track
International	Intermittent lake
State	Intermittent stream
County (with monument)	Bench mark
County subdivision	Spot elevation, feet
Reservation	Dam
Military reservation	Rapids; Falls
School; Church	Large rapids and falls
Cemetery	Swamp, marsh
Churchyard	Rocks awash at low tide
	Wharf, pier
	Man-made shoreline

REPRINTED FROM MILITARY EDITION FOR CIVIL USE 1952
FOR SALE BY U.S. GEOLOGICAL SURVEY, FEDERAL CENTER, DENVER, COLORADO OR WASHINGTON 25, D.C.

U.S.G.S.
FILE COPY
Inspection and Mailing

INDEX TO BOUNDARIES

A	B	C

INDEX TO ADJOINING SHEETS

116°30'	116°15'	116°00'	115°45'
33°30'	33°15'	33°00'	32°45'

A. Riverside County
B. San Diego County
C. Imperial County

Sheet 2750 falls within NS 11-A, AMS V500, 1:250,000

USGS
Historical File
Topographic Division