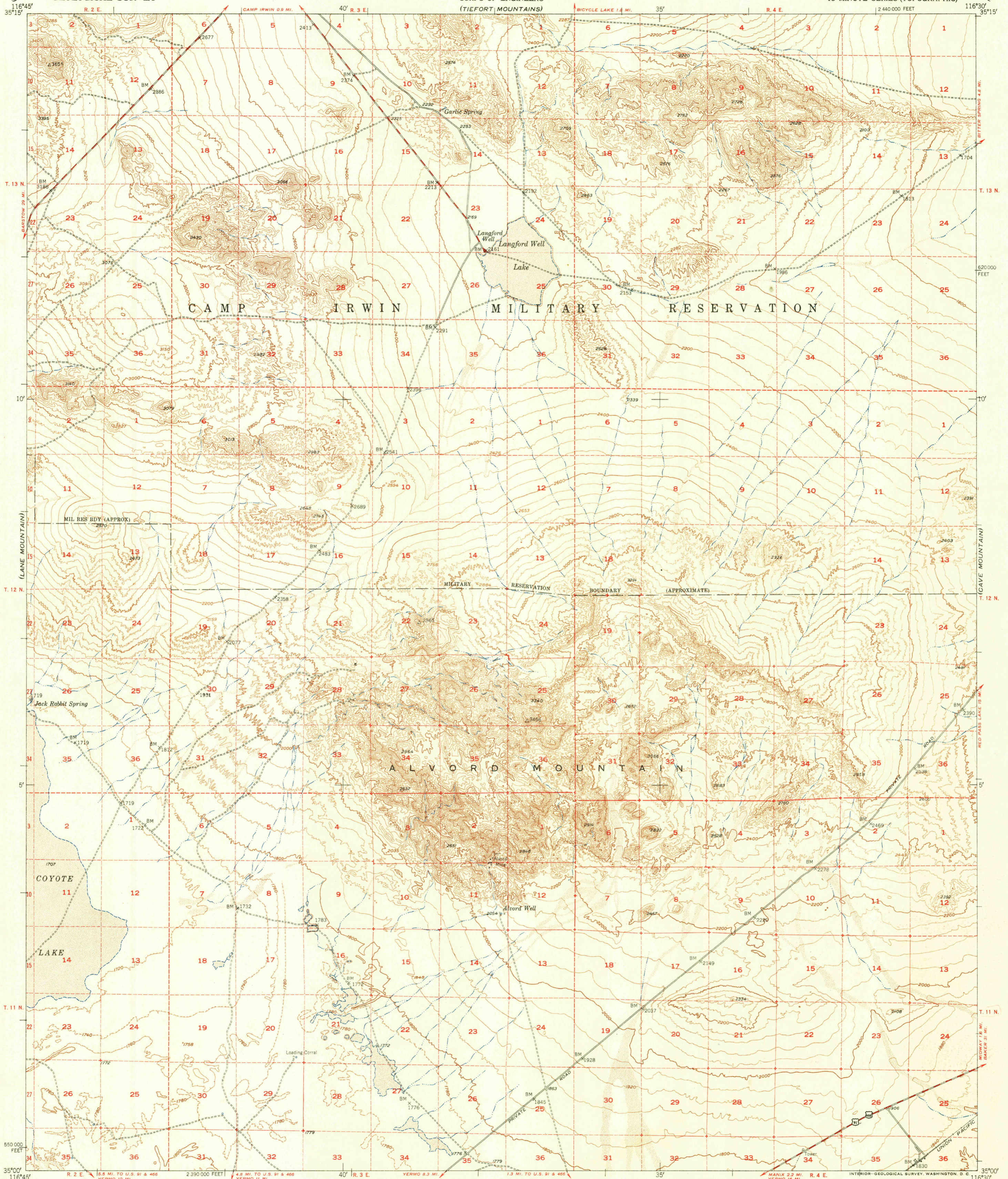


UNITED STATES
DEPARTMENT OF THE INTERIOR
GEOLOGICAL SURVEY

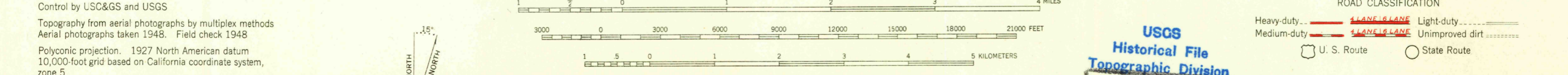
U.S.G.S.
FILE COPY
Inspection and Editing.

UNITED STATES
DEPARTMENT OF THE ARMY
CORPS OF ENGINEERS
(TIEFORT MOUNTAINS)

ALVORD MOUNTAIN QUADRANGLE
CALIFORNIA-SAN BERNARDINO CO.
15 MINUTE SERIES (TOPOGRAPHIC)



Maped, edited, and published by the Geological Survey
Control by USC&GS and USGS
Topography from aerial photographs by multiplex methods
Aerial photographs taken 1948. Field check 1948
Polyconic projection. 1927 North American datum
10,000-foot grid based on California coordinate system,
zone 5
Dashed land lines indicate approximate location
Unchecked elevations are shown in brown



TRUE NORTH
MAGNETIC NORTH
APPROXIMATE MEAN DECLINATION, 1948
CONTOUR INTERVAL 40 FEET
DASHED LINES REPRESENT HALF-INTERVAL CONTOURS
DATUM IS MEAN SEA LEVEL
THIS MAP COMPLIES WITH NATIONAL MAP ACCURACY STANDARDS
FOR SALE BY U.S. GEOLOGICAL SURVEY, FEDERAL CENTER, DENVER, COLORADO OR WASHINGTON 25, D. C.
A FOLDER DESCRIBING TOPOGRAPHIC MAPS AND SYMBOLS IS AVAILABLE ON REQUEST

USCS
Historical File
Topographic Division
U.S.G.S.
FILE COPY
Inspection and Editing.

ROAD CLASSIFICATION
Heavy-duty... Light-duty...
Medium-duty... Unimproved dirt...
U. S. Route State Route

ALVORD MOUNTAIN, CALIF.
N3500-W11630/15
EDITION OF 1951

AUG 15 1951