

(JUBILEE PASS)

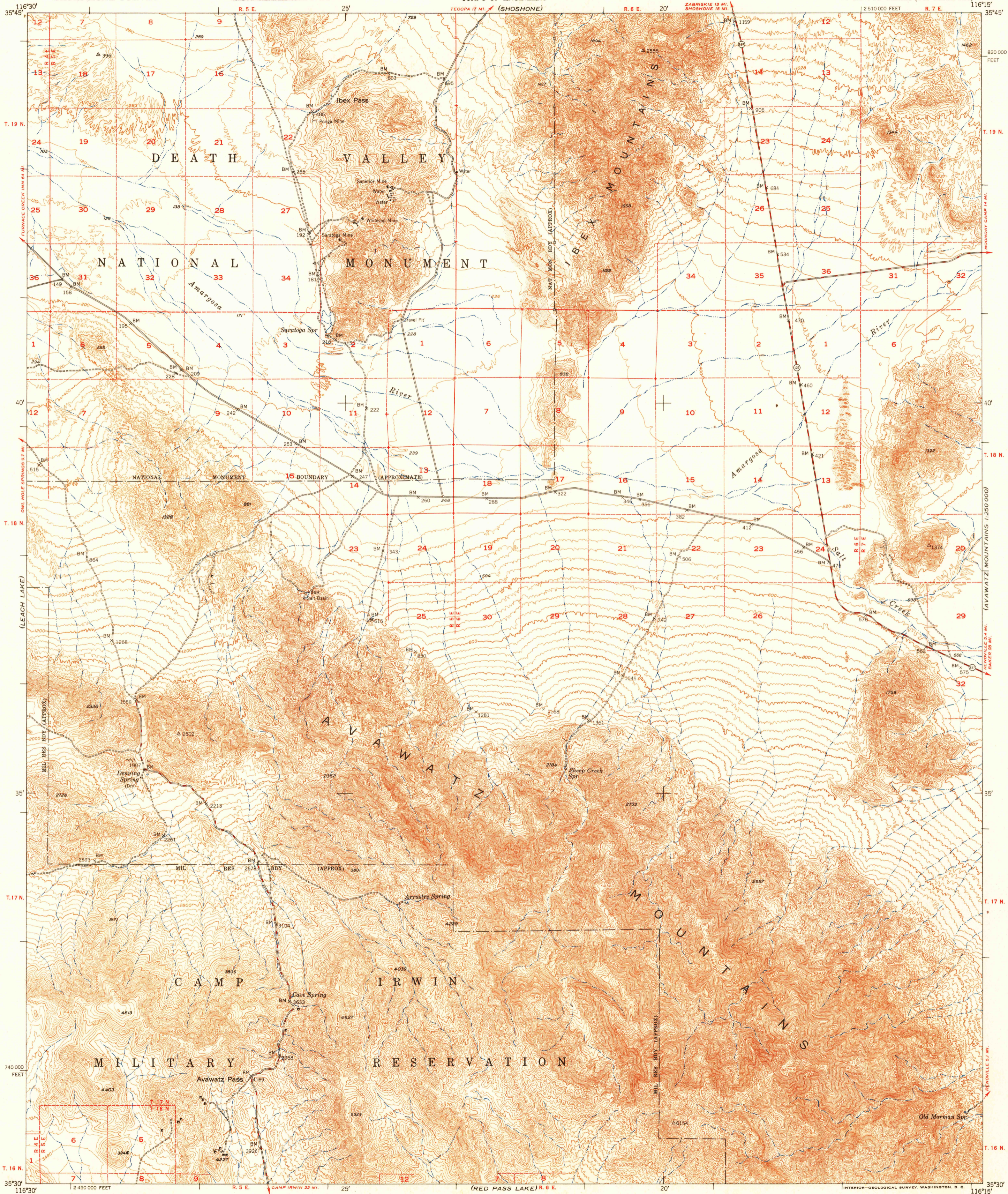
U.S.G.S. FILE COPY Inspection and Editing.

UNITED STATES DEPARTMENT OF THE INTERIOR GEOLOGICAL SURVEY

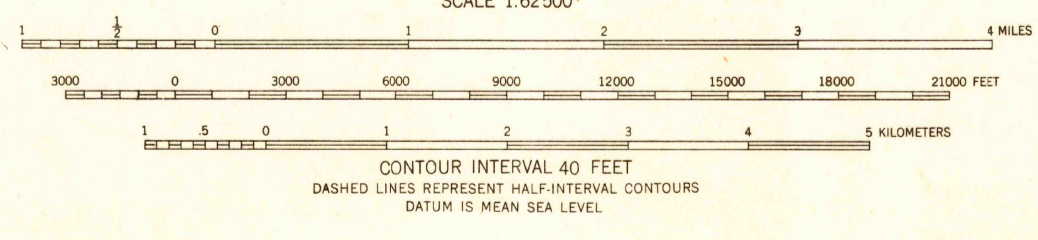
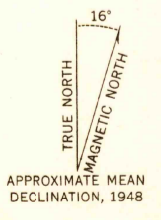
UNITED STATES DEPARTMENT OF THE ARMY CORPS OF ENGINEERS

AVAWATZ PASS QUADRANGLE CALIFORNIA-SAN BERNARDINO CO. 15 MINUTE SERIES (TOPOGRAPHIC)

(TECOPA)



Mapped, edited, and published by the Geological Survey Control by USCGS and USGS Topography from aerial photographs by multiplex methods Aerial photographs taken 1948. Field check 1948 Polyconic projection. 1927 North American datum 10,000-foot grid based on California coordinate system, zone 5 Dashed land lines indicate approximate location Unchecked elevations are shown in brown



ROAD CLASSIFICATION table with symbols for heavy-duty, medium-duty, light-duty, and unimproved dirt roads, as well as U.S. and State routes.

USGS Historical File Topographic Division

U.S.G.S. FILE COPY Inspection and Editing.

AVAWATZ PASS, CALIF. N3530-W11615/15 EDITION OF 1951

THIS MAP COMPLIES WITH NATIONAL MAP ACCURACY STANDARDS FOR SALE BY U.S. GEOLOGICAL SURVEY. FEDERAL CENTER, DENVER, COLORADO OR WASHINGTON 25, D. C. A FOLDER DESCRIBING TOPOGRAPHIC MAPS AND SYMBOLS IS AVAILABLE ON REQUEST

AUG 14 1951 3205