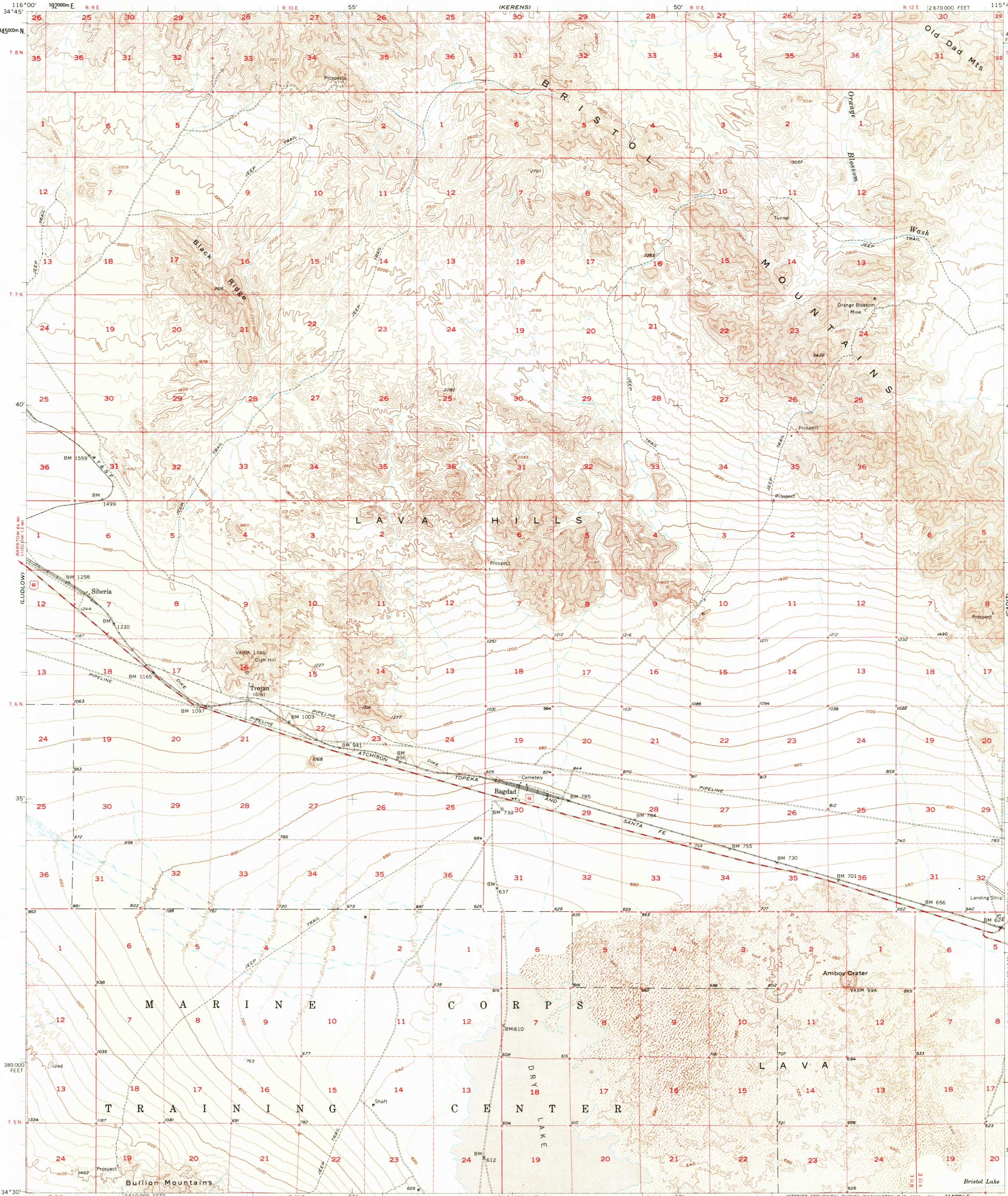
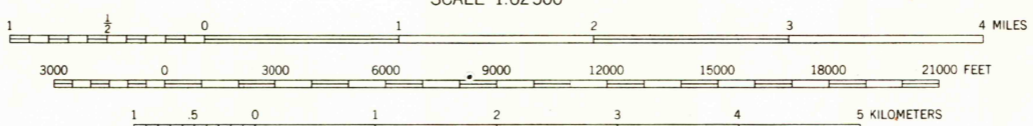


(ROADWELL LAKE)
116°00' 34'45" W
3845000m N
T. 8 N
T. 7 N
40'
T. 6 N
35'
380000 FEET
T. 5 N
34°30' 116°00' W

(FLYNN)
115°45' 34'45" W
460000 FEET
T. 8 N
T. 7 N
40'
T. 6 N
35'
T. 5 N
3819000m N
34°30' 115°45' W



Mapped, edited, and published by the Geological Survey
Control by USGS and USC&GS
Topography from planetable surveys 1954 and by
photogrammetric methods from aerial photographs
taken 1952 and 1954. Field check 1956
Polyconic projection. 1927 North American datum
10,000-foot grid based on California coordinate system,
zone 5
1000-meter Universal Transverse Mercator grid ticks,
zone 11, shown in blue
Dashed land lines indicate approximate locations
Certain land lines are omitted in T. 7 N.—R. 12 E.
because of insufficient data
Unchecked elevations are shown in brown



CONTOUR INTERVAL 40 FEET
DASHED LINES REPRESENT 20-FOOT CONTOURS
DATUM IS MEAN SEA LEVEL

ROAD CLASSIFICATION
Medium-duty — Light-duty
Unimproved dirt
U.S. Route
South half is also covered by 1:24 000 scale maps of
Bagdad SW and Amboy Crater 7.5 minute quadrangles,
surveyed in 1954



QUADRANGLE LOCATION

THIS MAP COMPLIES WITH NATIONAL MAP ACCURACY STANDARDS
FOR SALE BY U.S. GEOLOGICAL SURVEY, DENVER 25, COLORADO OR WASHINGTON 25, D. C.
A FOLDER DESCRIBING TOPOGRAPHIC MAPS AND SYMBOLS IS AVAILABLE ON REQUEST

BAGDAD, CALIF.
N3430—W11545/15
1956

USGS
Historical File
Topographic Division

MAY 20 1980
2200