

RESTRICTED

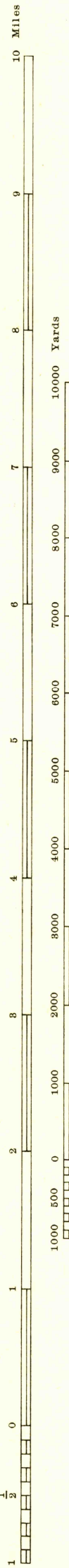
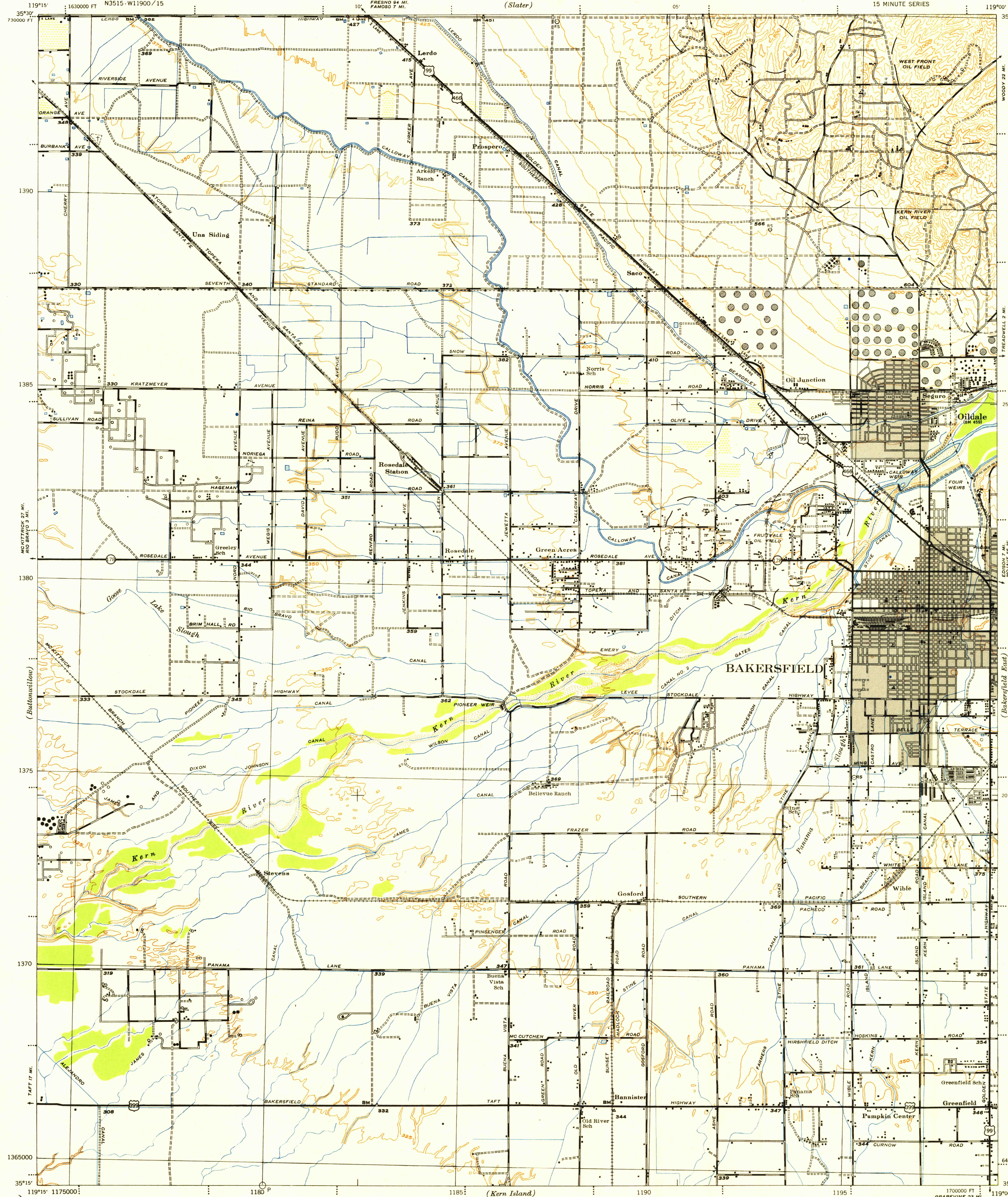
WAR DEPARTMENT
CORPS OF ENGINEERS, U. S. ARMY

U. S. G. S.
FILE COPY
Inspection and Edition

RESTRICTED

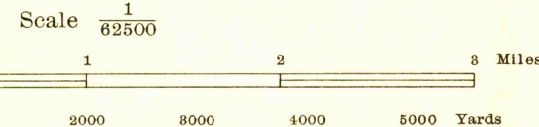
CALIFORNIA
KERN COUNTY
BAKERSFIELD WEST QUADRANGLE
GRID ZONE "G"

CALIFORNIA
KERN COUNTY
BAKERSFIELD WEST QUADRANGLE
GRID ZONE "G"
15 MINUTE SERIES



Prepared under the direction of the Chief of Engineers, U. S. Army, 1942.
Control by U. S. Geological Survey, 1933-1910.
Topography by U. S. Geological Survey, 1929-1930.
Photography by Agricultural Adjustment Administration, 1937.
Planimetric detail revised by 29th Engineers, U. S. Army, 1942.
Polyconic Projection, North American 1927 Datum.

CLASSIFICATION CANCELLED BY
AUTHORITY OF CHIEF OF ENGINEERS
LETTER OF
JUN 22 1946



Contour interval 25 feet
Datum is mean sea level (1929 Adj.)

FIVE THOUSAND YARD GRID COMPUTED FROM "GRID SYSTEM FOR PROGRESSIVE MAPS OF THE U. S. ZONE 'G'" U. S. C. & G. S. SPECIAL PUBLICATION NO. 59 (THE LAST THREE DIGITS OF THE GRID NUMBERS ARE OMITTED)
CALIFORNIA STATE GRID ZONE 5 IS INDICATED BY DOTTED TICKS OUTSIDE THE NEAT LINE AT 10,000 FOOT INTERVALS
NOTE: OFFICERS USING THIS MAP WILL MARK HEREON CORRECTIONS AND ADDITIONS WHICH COME TO THEIR ATTENTION AND MAIL DIRECT TO THE CHIEF OF ENGINEERS, WASHINGTON, D. C.

APPROXIMATE MEAN DECLINATION 1943 FOR CENTER OF SHEET
ANNUAL MAGNETIC CHANGE 0.2" INCREASE
USE DIAGRAM ONLY TO OBTAIN NUMERICAL VALUES. TO DETERMINE MAGNETIC NORTH LINE, CONNECT THE PIVOT POINT "M" ON THE SOUTH EDGE OF THE MAP WITH THE VALUE OF THE ANGLE BETWEEN GRID AND MAGNETIC NORTH AS PLOTTED ON THE DEGREE SCALE AT THE NORTH EDGE OF THE MAP.

U.S.G.S.
FILE COPY
TOPOGRAPHIC DIVISION
HISTORICAL

29TH ENGINEER REPRODUCTION PLANT, PORTLAND, OREGON
AMS NO. 104933
1943

GRAY OVERTINT SHOWS URBAN AREA WHERE ONLY LANDMARK BUILDINGS ARE PLOTTED.

RESTRICTED
BAKERSFIELD WEST, CALIF.
N3515-W11900/15

USGS
Historical File
Topographic Division

ROAD CLASSIFICATIONS
Dependable hard surface, heavy duty road
Secondary, hard surface, all weather road
More than two lanes indicated by note with tick at point of change.
Road Data 1942
Loose surface graded, dry weather road
Dirt road
U. S. Route
State Route