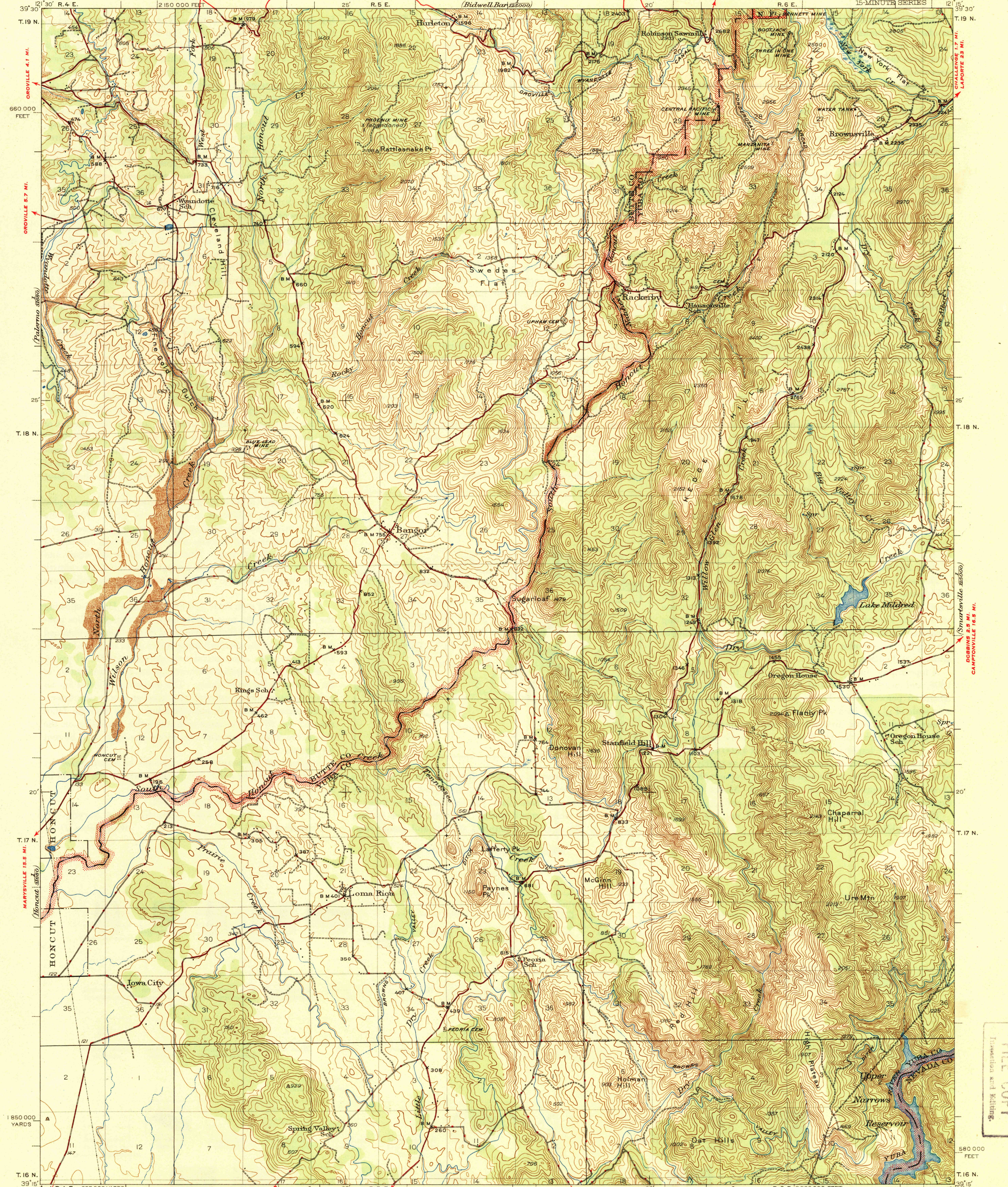


U. S. G. S.
FILE COPY
Inspection and Editing.

UNITED STATES QUINCY (JUNC. STATE NOS. 24-29) 57 MI.
DEPARTMENT OF THE INTERIOR
GEOLOGICAL SURVEY
BIDWELL BAR 3.5 MI.

WAR DEPARTMENT
BIDWELL BAR (25000)

CALIFORNIA
BANGOR QUADRANGLE
15-MINUTE SERIES



(Oroville) 4.7 MI.
660 000 FEET
T. 19 N.
T. 18 N.
T. 17 N.
T. 16 N.
1850 000 YARDS
MARYSVILLE 12.2 MI.
BROWNS VALLEY 0.8 MI.
MARYSVILLE 14.3 MI.
SACRAMENTO (CIVIC CENTER) 62 MI.
MARYSVILLE 16.5 MI.
CAMPIONVILLE 16.5 MI.
SMARTVILLE 4.5 MI.
PARKS BAR 5000

FORBESTOWN 7 MI.
ROBBINS 2.5 MI.
CAMPIONVILLE 16.5 MI.
SMARTVILLE 4.5 MI.
PARKS BAR 5000

Scale 1:25000
0 1 2 3 4 Miles
0 1000 2000 3000 4000 5000 6000 7000 Yards
0 1 2 3 4 5 Kilometers

Polyconic projection, 1927 North American datum
5000 yard grid based on U.S. zone system, G
10000 foot grid based on California (2)
rectangular coordinate system

USGS
Historical File
Topographic Division

Contour interval 50 feet
Datum is mean sea level
Map of the Prairie Creek quadrangle, from a more detailed survey of the southwest part of this quadrangle, is available

ROAD CLASSIFICATION 1944
Dependable hard surface
Heavy-duty road
Secondary hard surface
Unsurfaced, graded
Dirt road
More than two lanes indicated along road with tick at point of change
Loose surface, graded
Unsurfaced, graded
Dry weather roads
U.S. Route
State Route
PLANE LEANS

BANGOR, CALIF.
Edition of 1944
N3915-W12115/15

U. S. G. S.
FILE COPY
Inspection and Editing.

6000