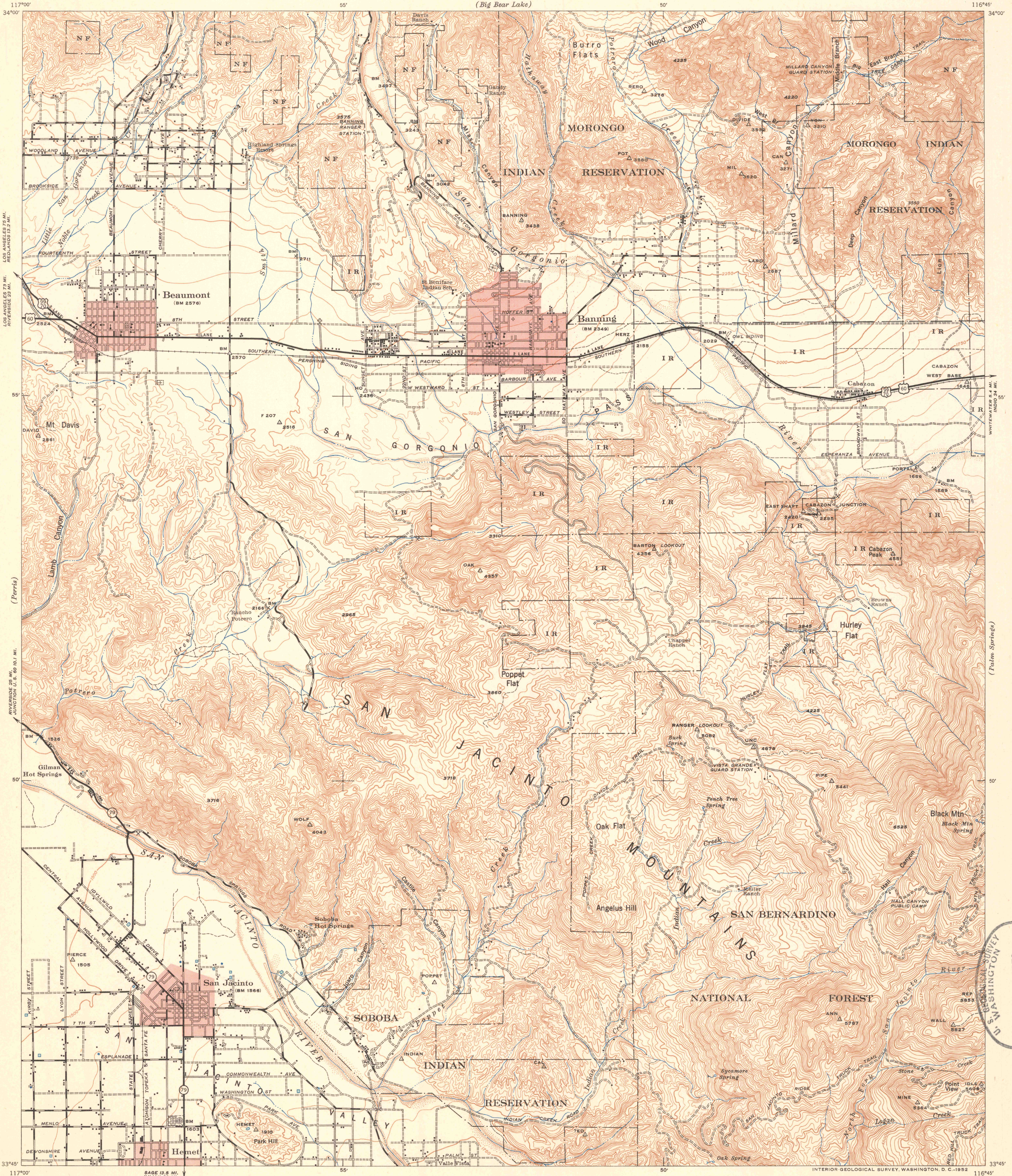


N3345-W11645/15

15 MINUTE SERIES

(Big Bear Lake)



(Redlands)  
LOS ANGELES 75 MI.  
RIVERSIDE 25 MI.

(Morongo Valley)  
WHITEWATER 5.4 MI.  
INDIO 34 MI.

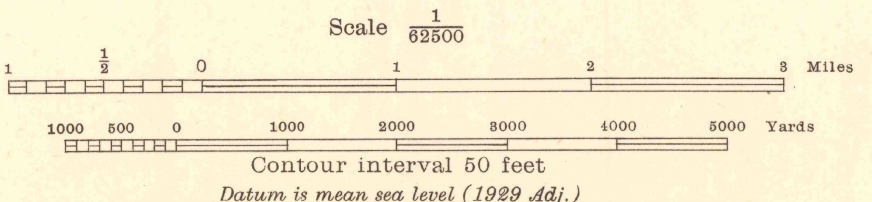
(Perris)  
RIVERSIDE 25 MI.  
JUNCTION U.S. 60 10.1 MI.

(Palm Springs)  
INDIO 34 MI.

(Murietta)  
SAGE 13.8 MI.  
JULIAN 68 MI.

(Hemet Reservoir)

Prepared under the direction of the Chief of Engineers, U. S. Army, 1942.  
Horizontal control by U. S. Coast and Geodetic Survey, 1928, Metropolitan Water District of Southern California, 1931-32 and 29th Engineers, U. S. Army, 1939-41.  
Vertical control by U. S. Coast and Geodetic Survey, 1928, 1935, 1937, Metropolitan Water District of Southern California, 1931-32 and 29th Engineers, U. S. Army, 1939-41.  
Topography by 29th Engineers, U. S. Army, 1942, utilizing multiplex aero-projectors, from Tardem T-3A (5 lens) aerial photographs.  
Photography by 91st Observation Squadron, Air Corps, U. S. Army, 1939, 1941.  
Polyconic Projection, North American 1927 Datum.



ROAD CLASSIFICATIONS

Dependable hard surface, heavy duty road	Loose surface graded, dry weather road	U. S. Route 99
Secondary, hard surface, all weather road	Dirt road	State Route 79
More than two lanes indicated by note with tick at point of change.		2 LANE 4 LANE

Road Data 1943

- IR Morongo Indian Reservation
- NF National Forest

REPRINTED FROM MILITARY EDITION FOR CIVIL USE 1952  
FOR SALE BY U. S. GEOLOGICAL SURVEY, FEDERAL CENTER, DENVER, COLORADO, OR WASHINGTON 25, D. C.

TRUE NORTH  
MAGNETIC NORTH  
APPROXIMATE MEAN DECLINATION, 1943

BANNING, CALIF.  
N3345-W11645/15

