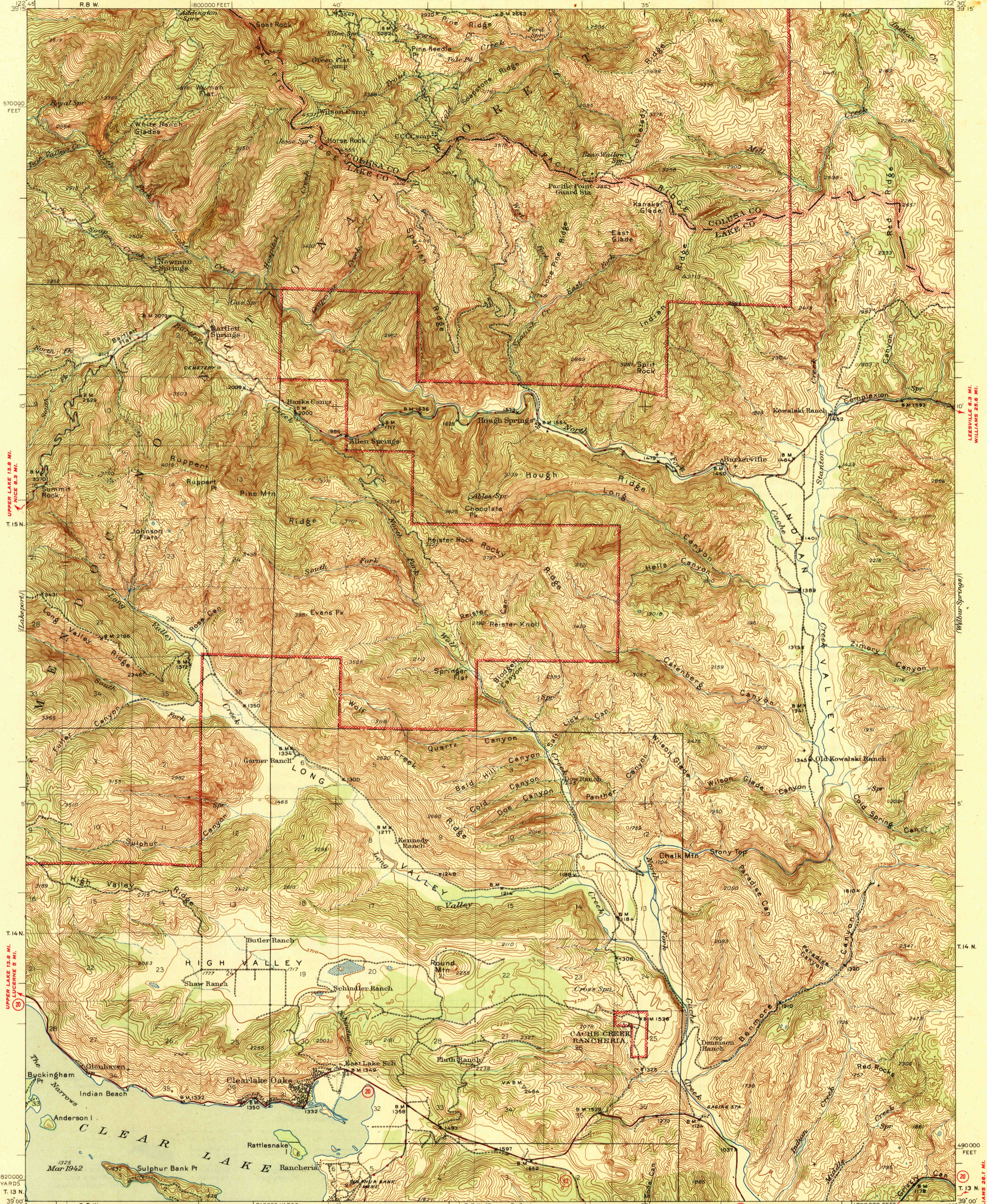


U.S.G.S. FILE COPY Inspection and Editing.

UNITED STATES DEPARTMENT OF THE INTERIOR GEOLOGICAL SURVEY

WAR DEPARTMENT CORPS OF ENGINEERS, U.S. ARMY

CALIFORNIA BARTLETT SPRINGS QUADRANGLE 15-MINUTE SERIES



UPPER LAKE 13.8 MI. NICE 8.3 MI.

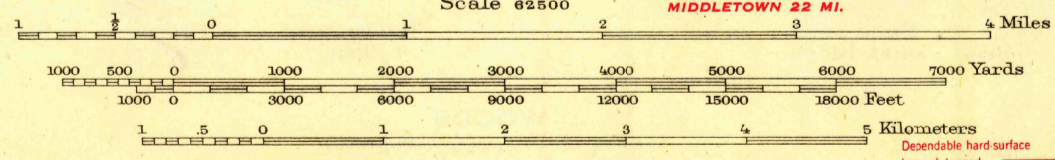
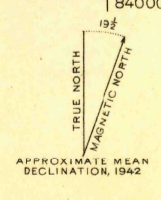
UPPER LAKE 13.8 MI. LUCERNE 5 MI.

LEESVILLE 8.3 MI. WILLIAMS 2.6 MI.

WILBUR SPRINGS

490000 FEET T. 13 N. MARYSVILLE 28.1 MI. MARYSVILLE 25 MI. (Moyen Valley)

Topography by B.F. Martin and Ernest Blessing Surveyed in 1942



USGS Historical File Topographic Division

Contour interval 50 feet Datum is mean sea level

ROAD CLASSIFICATION 1944
Dependable hard surface heavy-duty road
Secondary hard surface all weather road
Loose surface, graded
Unsurfaced, graded
Litter road
Dry weather roads
State Route

Polyconic projection, 1927 North American datum 5000 yard grid based on U.S. zone system, G 10000 foot grid based on California (2) rectangular coordinate system
Certain land lines are omitted because of insufficient data
All recovered corners are shown
BARTLETT SPRINGS, CALIF. Edition of 1944. N3900-W12230/15

FILE COPY Inspection and Editing.

5930

JAN 27 1945