

CHICO 1:25000

UNITED STATES DEPARTMENT OF THE INTERIOR GEOLOGICAL SURVEY

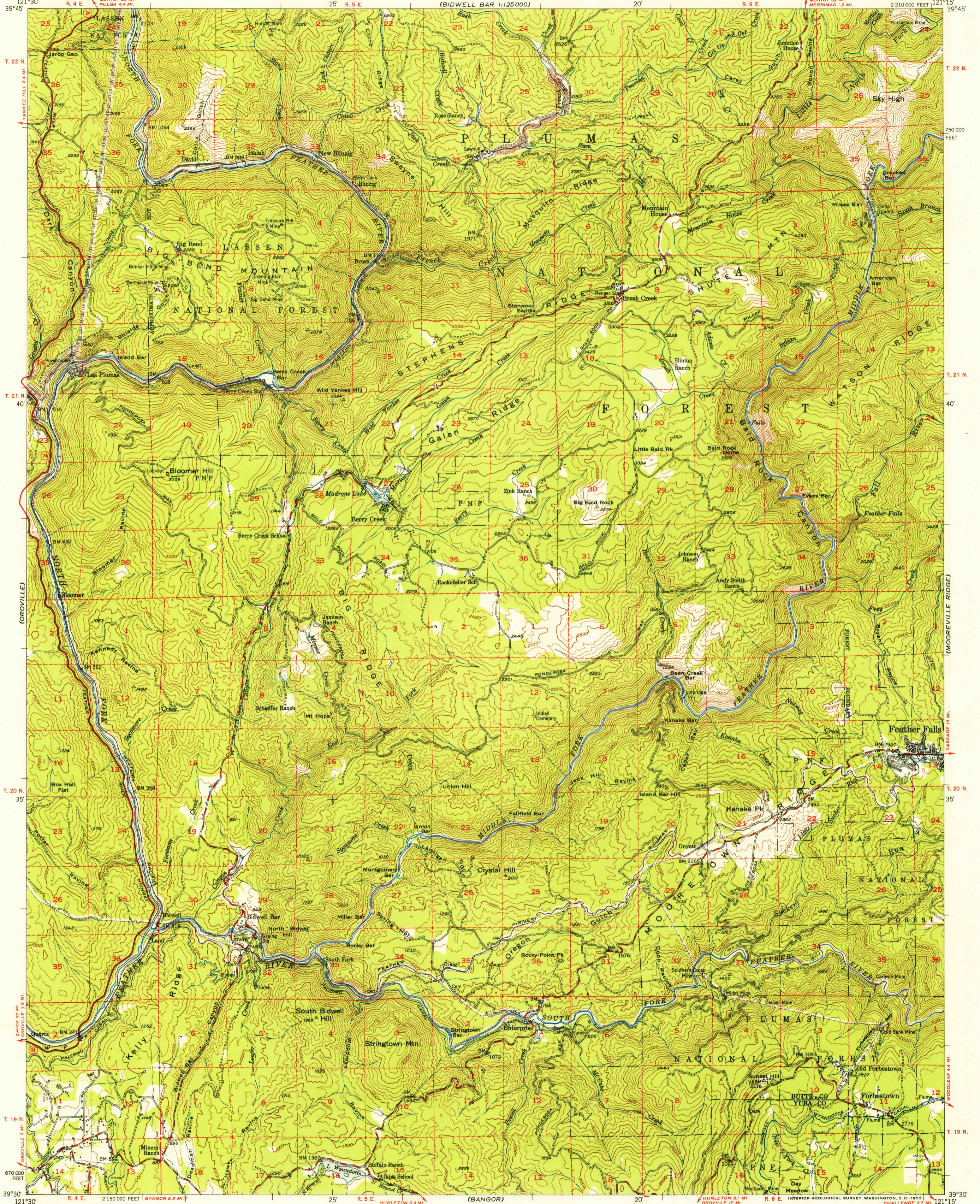
BUREAU OF RECLAMATION

STATE OF CALIFORNIA EARL WARREN, GOVERNOR FRANK B. DURKEE, DIRECTOR OF PUBLIC WORKS A. D. EDMONSTON, STATE ENGINEER

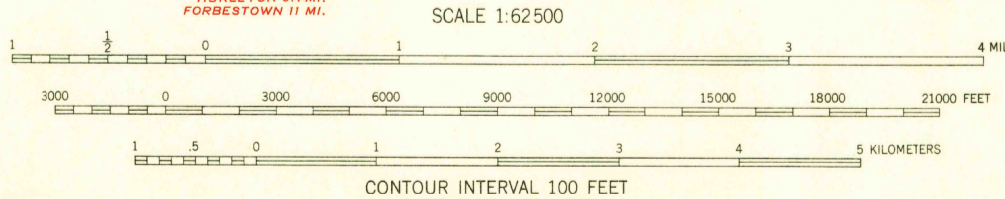
U.S.G.S. FILE COPY

BIG BEND MTN. QUADRANGLE CALIFORNIA 15 MINUTE SERIES (TOPOGRAPHIC)

BLUOKS LAKE



Mapped by Fairchild Aerial Surveys, Inc. Field inspected, edited, and published by the Geological Survey Control by Fairchild Aerial Surveys, Inc., USGS, and USC&GS Topography from aerial photographs by stereoplano-graph methods Aerial photographs taken 1946-1947. Field check 1948 Polyconic projection. 1927 North American datum 10,000-foot grid based on California coordinate system, zone 2 Dashed land lines indicate approximate locations



ROAD CLASSIFICATION: Heavy-duty (4 LANE 16 LANE), Medium-duty (4 LANE 8 LANE), Light-duty, Unimproved dirt. U.S. Route, State Route. This area is also covered by 1:24,000 scale maps of Brush Creek, Las Plumas, Bidwell Bar, and Forbestown 7.5 minute quadrangles. BIG BEND MTN., CALIF. N3930-W12115/15 1948

THIS MAP COMPLIES WITH NATIONAL MAP ACCURACY STANDARDS FOR SALE BY U. S. GEOLOGICAL SURVEY, FEDERAL CENTER, DENVER, COLORADO OR WASHINGTON 25, D. C. A FOLDER DESCRIBING TOPOGRAPHIC MAPS AND SYMBOLS IS AVAILABLE ON REQUEST

U.S.G.S. FILE COPY Inspection and Editing

MAR 18 1953 3140