

(MT. MORRISON)
1:125,000

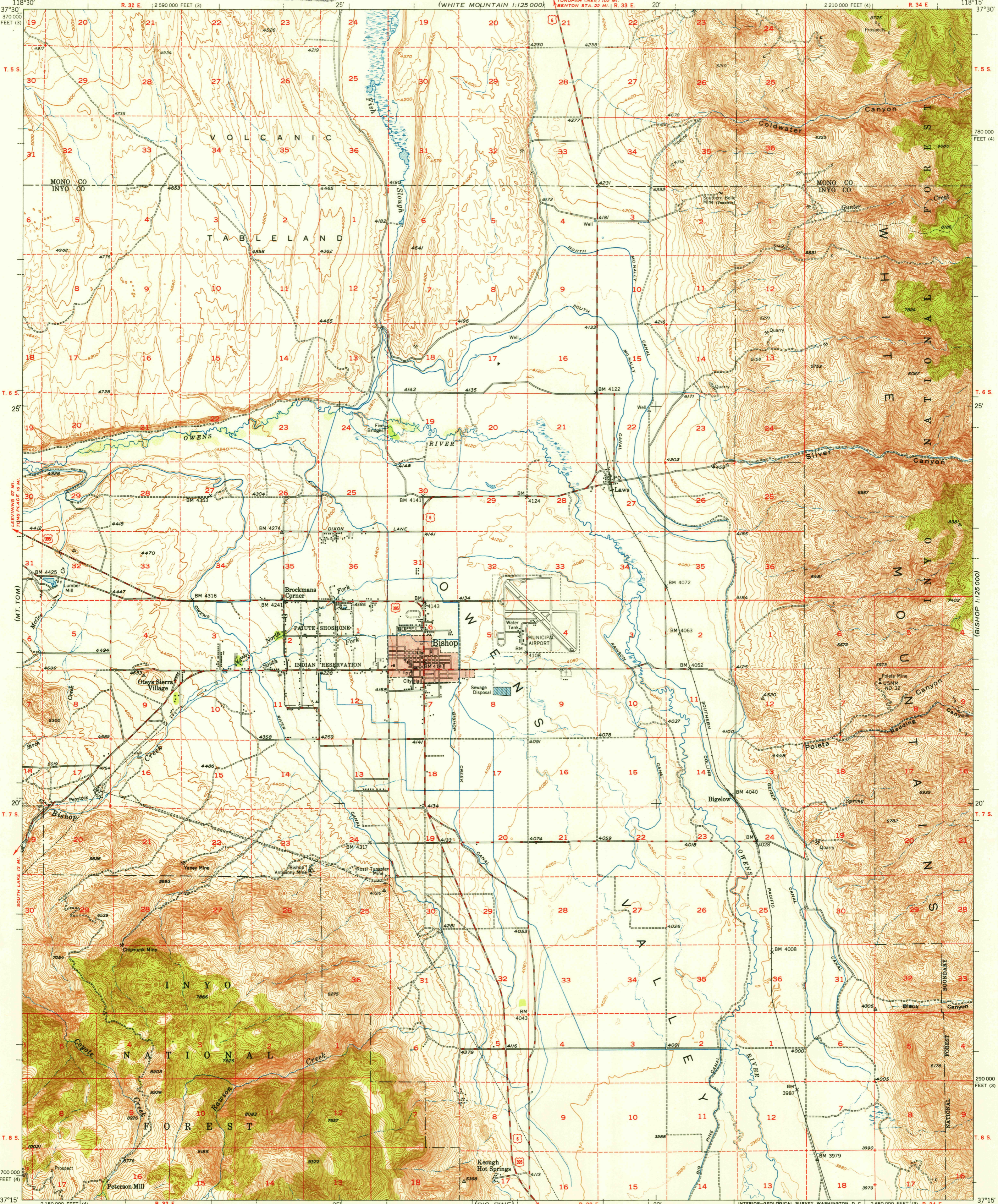
UNITED STATES
DEPARTMENT OF THE INTERIOR
GEOLOGICAL SURVEY

U.S.G.S.
FILE COPY
Inspection and Printing

STATE OF CALIFORNIA
EARL WARREN, GOVERNOR
C. H. PURCELL, DIRECTOR OF PUBLIC WORKS
A. D. EDMONSTON, STATE ENGINEER

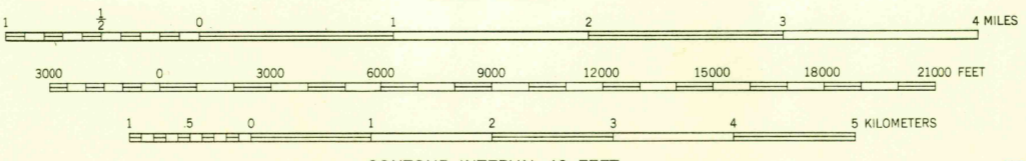
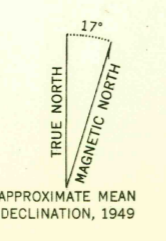
BISHOP QUADRANGLE
CALIFORNIA
15 MINUTE SERIES (TOPOGRAPHIC)

(WHITE MOUNTAIN)
1:125,000



(MT. GODDARD)

Mapped, edited, and published by the Geological Survey
Control by USGS, USC&GS, and Metropolitan
Water District of Southern California
Topography from aerial photographs by multiplex methods
and plane-table surveys
Aerial photographs taken 1947. Field check 1949
Polyconic projection. 1927 North American datum
10,000-foot grid based on California coordinate system,
zones 3 and 4
Unchecked elevations are shown in brown
Red tint indicates area in which only
landmark buildings are shown
Dashed land lines indicate approximate location



USGS
Historical File
Topographic Division

U.S.G.S.
FILE COPY
Inspection and Printing

ROAD CLASSIFICATION
HARD-SURFACE ALL WEATHER ROADS DRY WEATHER ROADS
Heavy-duty ——— **LANE IS LANE** Improved dirt
Medium-duty ——— **LANE IS LANE** Unimproved dirt
Loose-surface, graded, or narrow hard-surface - - -
U. S. Route State Route

BISHOP, CALIF.
N3715-W11815/15
EDITION OF 1951

THIS MAP COMPLIES WITH NATIONAL MAP ACCURACY STANDARDS
FOR SALE BY U. S. GEOLOGICAL SURVEY, FEDERAL CENTER, DENVER, COLORADO OR WASHINGTON 25, D. C.
A FOLDER DESCRIBING TOPOGRAPHIC MAPS AND SYMBOLS IS AVAILABLE ON REQUEST

APR 5 1951 3165