

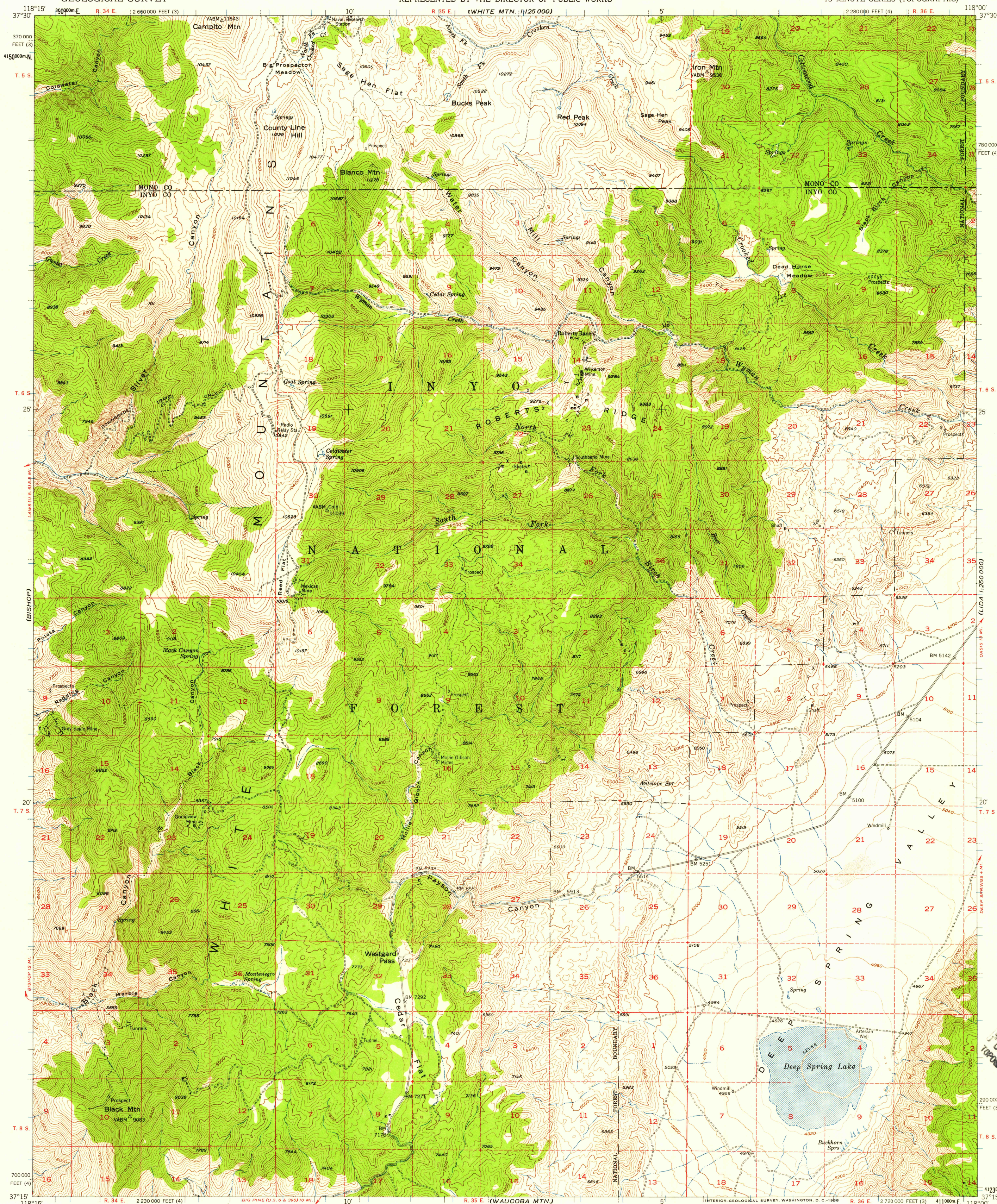
(WHITE MTN)
1:125 000

UNITED STATES
DEPARTMENT OF THE INTERIOR
GEOLOGICAL SURVEY

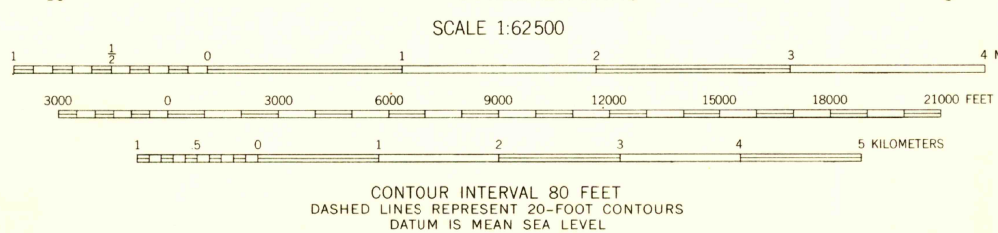
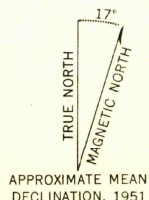
STATE OF CALIFORNIA
REPRESENTED BY THE DIRECTOR OF PUBLIC WORKS

BLANCO MOUNTAIN QUADRANGLE
CALIFORNIA
15 MINUTE SERIES (TOPOGRAPHIC)

(SILVER PEAK)
1:125 000



Mapped, edited, and published by the Geological Survey
Control by USGS and USC&GS
Topography from aerial photographs by multiplex methods
Aerial photographs taken 1947. Field check 1951
Polyconic projection. 1927 North American datum
10,000-foot grids based on California coordinate system,
zones 3 and 4
1000-meter Universal Transverse Mercator grid ticks,
zone 11, shown in blue
Dashed lard lines indicate approximate locations



USGS
Historical File
Topographic Division



ROAD CLASSIFICATION
Light-duty ————— Unimproved dirt —————

BLANCO MOUNTAIN, CALIF.
N3715-W11800/15

1951

MINOR CORRECTIONS MADE 1957

U.S.G.S.
FILE COPY
TOPOGRAPHIC DIVISION

JUL 25 1958