

WHITE MTN
1:125,000

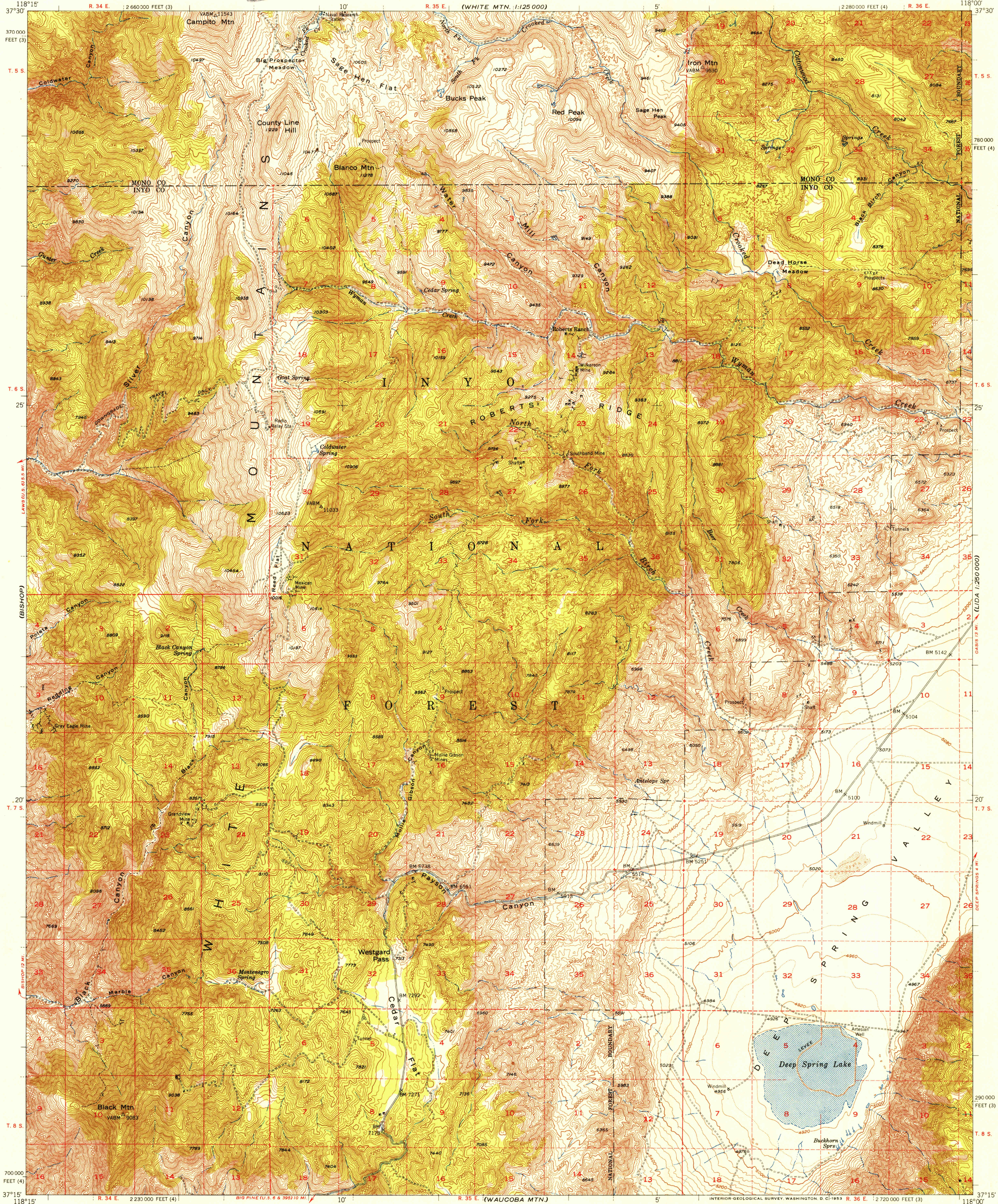
U.S.G.S.
FILE COPY
Inspection and Editing.

UNITED STATES
DEPARTMENT OF THE INTERIOR
GEOLOGICAL SURVEY

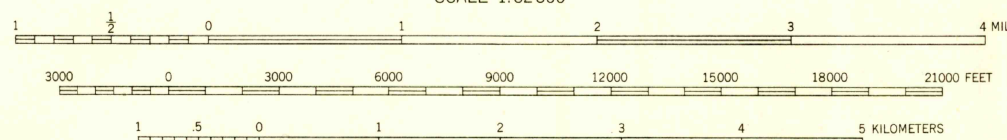
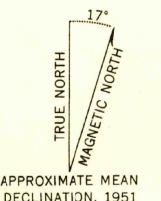
STATE OF CALIFORNIA
EARL WARREN, GOVERNOR
FRANK B. DURKEE, DIRECTOR OF PUBLIC WORKS
A. D. EDMONSTON, STATE ENGINEER

BLANCO MOUNTAIN QUADRANGLE
CALIFORNIA
15 MINUTE SERIES (TOPOGRAPHIC)

SILVER PEAK
1:125,000



Mapped, edited, and published by the Geological Survey
Control by USGS and USC&GS
Topography from aerial photographs by multiplex methods
Aerial photographs taken 1947. Field check 1951
Polyconic projection. 1927 North American datum
10,000-foot grid based on California coordinate system,
zones 3 and 4
Dashed land lines indicate approximate locations



CONTOUR INTERVAL 40 FEET
DOTTED LINES REPRESENT HALF-INTERVAL CONTOURS
DATUM IS MEAN SEA LEVEL

USGS
Historical File
Topographic Division

ROAD CLASSIFICATION
Heavy-duty 4 LANE 6 LANE Light-duty
Medium-duty 4 LANE 6 LANE Unimproved dirt
U.S. Route State Route

U.S.G.S.
FILE COPY
Inspection and Editing.

BLANCO MOUNTAIN, CALIF.
N3715-W11800/15

1951

FEB 12 1953

3130