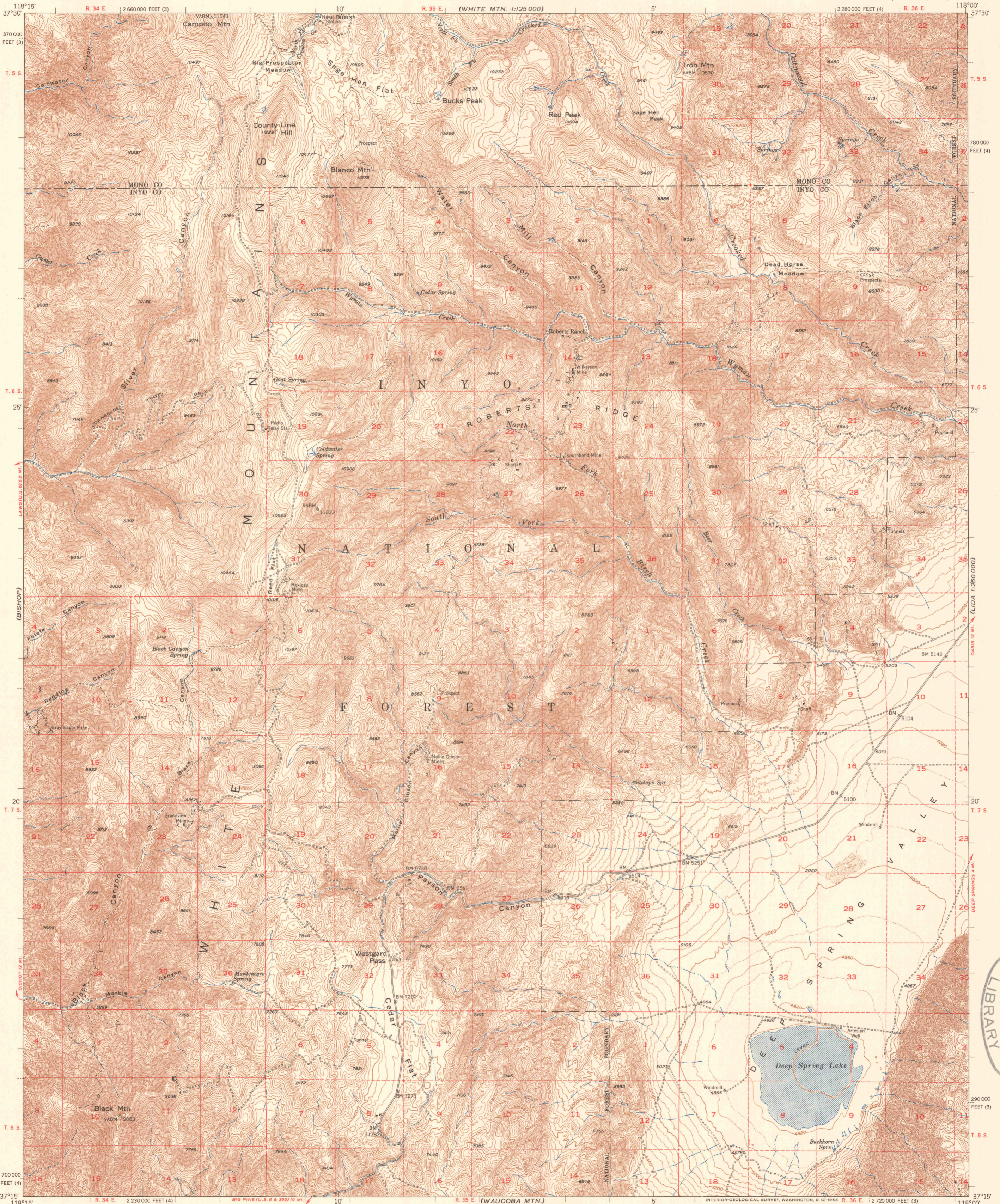
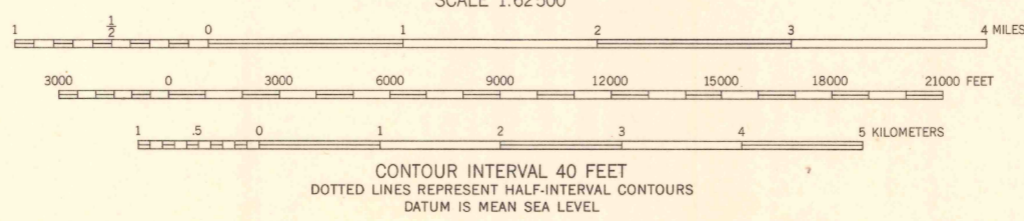
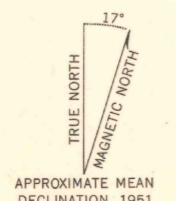


(WHITE MTN)
1:125,000

(SILVER PEAK)
1:125,000



Mapped, edited, and published by the Geological Survey
Control by USGS and USC&GS
Topography from aerial photographs by multiplex methods
Aerial photographs taken 1947. Field check 1951
Polyconic projection. 1927 North American datum
10,000-foot grid based on California coordinate system,
zones 3 and 4
Dashed land lines indicate approximate locations



ROAD CLASSIFICATION

Heavy-duty	4 LANE 16 LANE	Light-duty
Medium-duty	4 LANE 16 LANE	Unimproved dirt

U.S. Route (square symbol)
State Route (circle symbol)

U.S. GEOLOGICAL SURVEY
WASHINGTON
LIBRARY
FEB 1 1953