

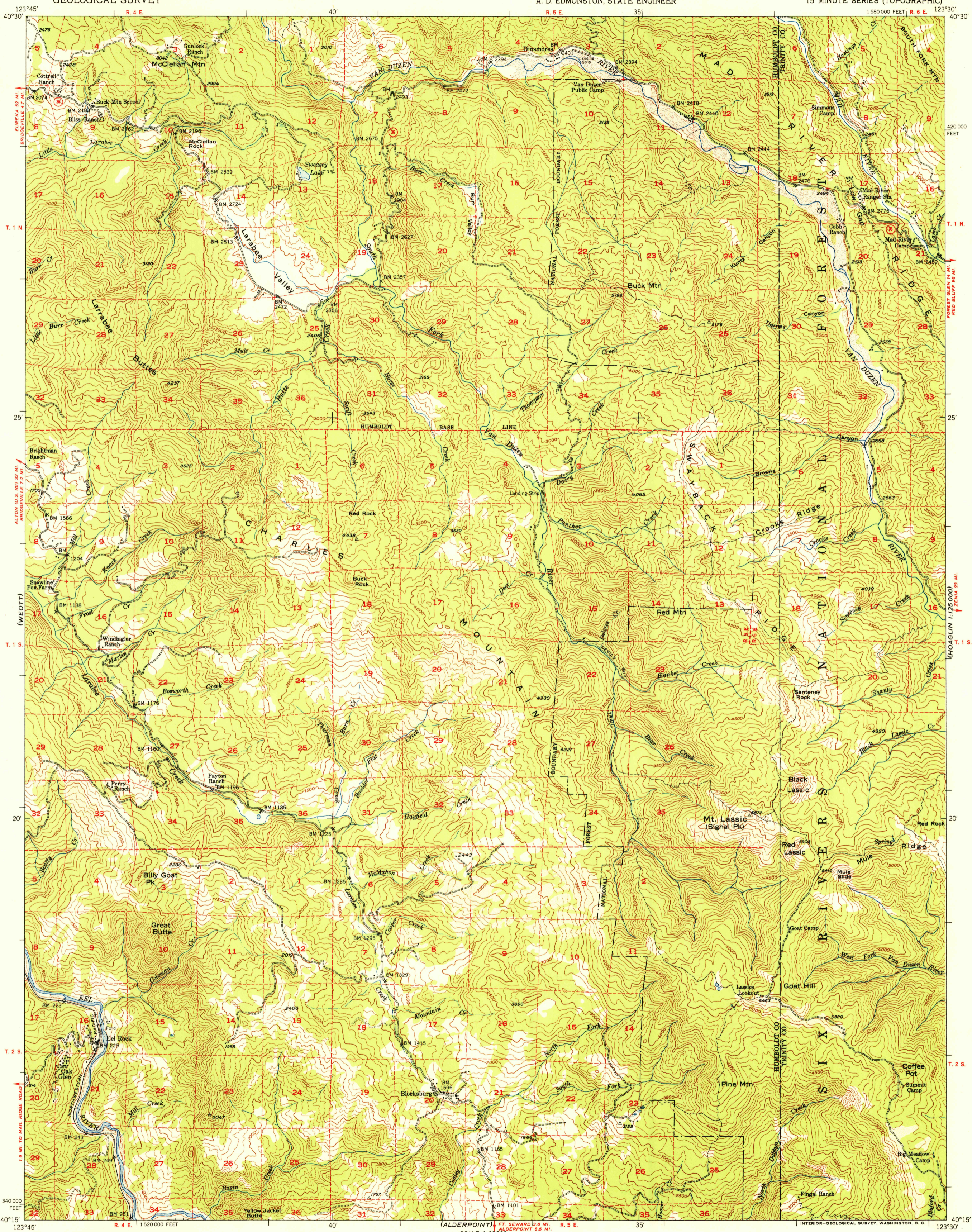
U.S.G.S. FILE COPY Inspection and Editing.

UNITED STATES DEPARTMENT OF THE INTERIOR GEOLOGICAL SURVEY

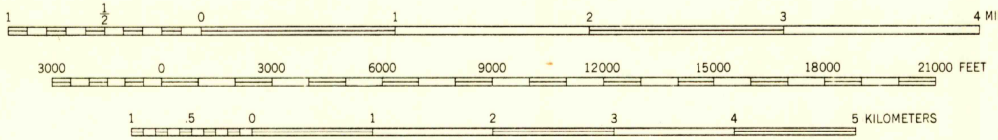
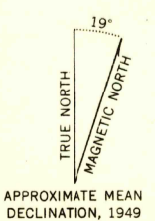
UNITED STATES DEPARTMENT OF THE ARMY CORPS OF ENGINEERS

STATE OF CALIFORNIA EARL WARREN, GOVERNOR C. H. PURCELL, DIRECTOR OF PUBLIC WORKS A. D. EDMONSTON, STATE ENGINEER

BLOCKSBURG QUADRANGLE CALIFORNIA 15 MINUTE SERIES (TOPOGRAPHIC)



Maped by the Army Map Service Field inspected, edited, and published by the Geological Survey Control by USGS, USC&GS, and US Army Topography from aerial photographs by multiple methods Aerial photographs taken 1941-1942. Field check, 1949 Polyconic projection. 1927 North American datum 10,000-foot grid based on California coordinate system, zone 1 Dashed land lines indicate approximate location



ROAD CLASSIFICATION Heavy-duty 4 LANE 16 LANE Light-duty Medium-duty 4 LANE 16 LANE Unimproved dirt U.S. Route State Route

USGS Historical File Topographic Division U.S.G.S. FILE COPY Inspection and Editing.

BLOCKSBURG, CALIF. N4015-W12330/15 EDITION OF 1951

FOR SALE BY U. S. GEOLOGICAL SURVEY, FEDERAL CENTER, DENVER, COLORADO OR WASHINGTON 25, D. C. A FOLDER DESCRIBING TOPOGRAPHIC MAPS AND SYMBOLS IS AVAILABLE ON REQUEST

MAY 9 1951