

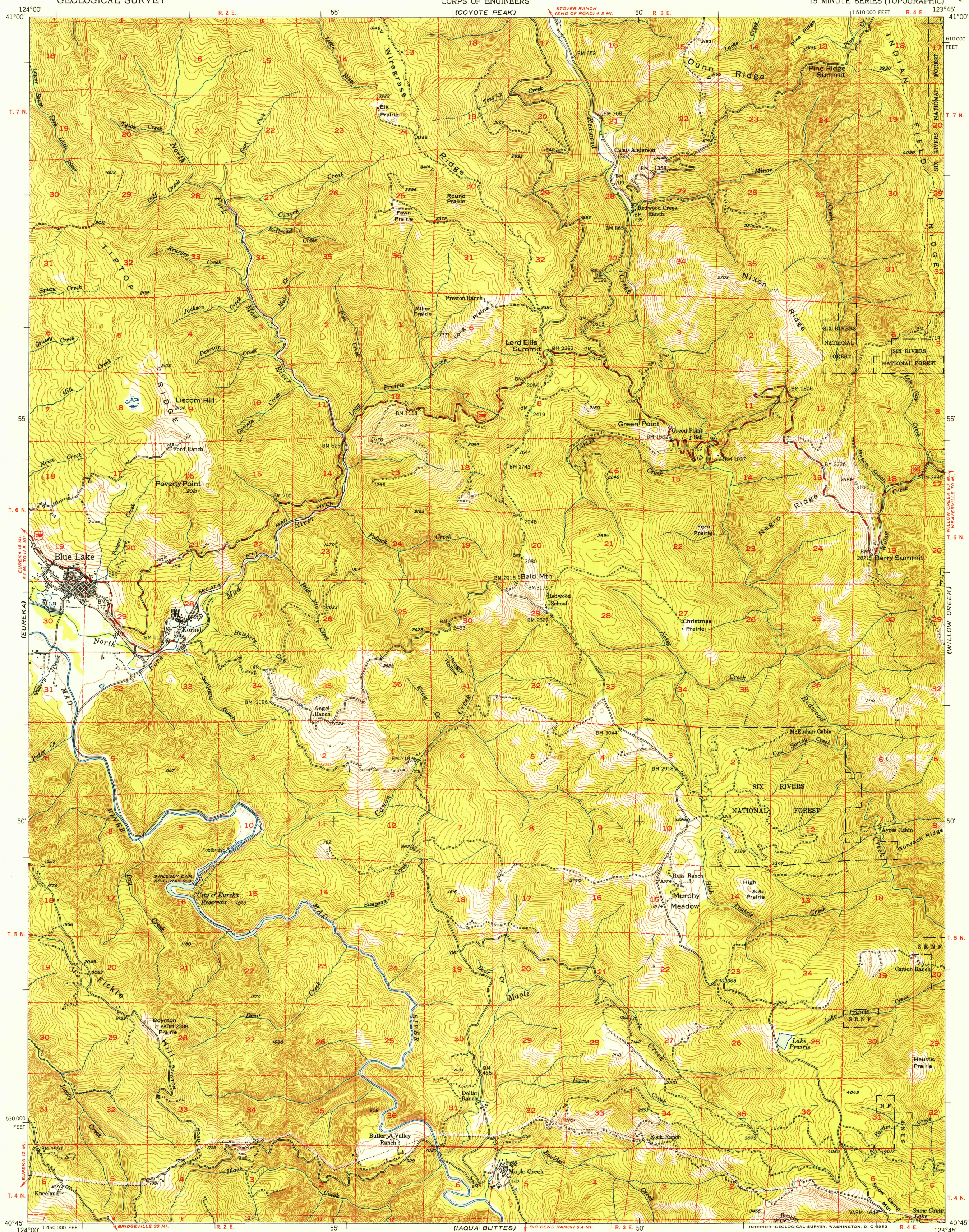
(TRINIDAD)

UNITED STATES  
DEPARTMENT OF THE INTERIOR  
GEOLOGICAL SURVEY

UNITED STATES  
DEPARTMENT OF THE ARMY  
CORPS OF ENGINEERS

BLUE LAKE QUADRANGLE  
CALIFORNIA-HUMBOLDT CO.  
15 MINUTE SERIES (TOPOGRAPHIC)

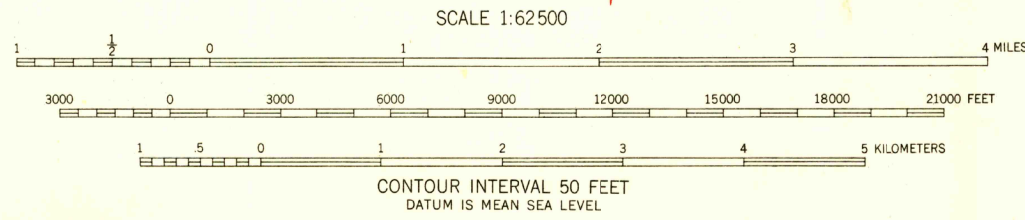
(HOOPA)



(FORTUNA)

Map by the Army Map Service  
Edited and published by the Geological Survey  
Control by USGS, USC&GS, and USCE  
Topography from aerial photographs by KEK plotter methods 1943  
Aerial photographs taken 1942. Culture revision by USGS 1951  
Polyconic projection. 1927 North American datum  
10,000-foot grid based on California coordinate system, zone 1  
Dashed land lines indicate approximate locations

TRUE NORTH  
MAGNETIC NORTH  
APPROXIMATE MEAN  
DECLINATION, 1951



ROAD CLASSIFICATION  
Heavy-duty 4 LANE 16 LANE Light-duty  
Medium-duty 4 LANE 16 LANE Unimproved dirt  
U. S. Route State Route

USGS  
Historical File  
Topographic Division

BLUE LAKE, CALIF.  
N4045-W12345/15

1951

FOR SALE BY U. S. GEOLOGICAL SURVEY, FEDERAL CENTER, DENVER, COLORADO OR WASHINGTON 25, D. C.  
A FOLDER DESCRIBING TOPOGRAPHIC MAPS AND SYMBOLS IS AVAILABLE ON REQUEST

(PILOT CREEK)

APR 6 1953