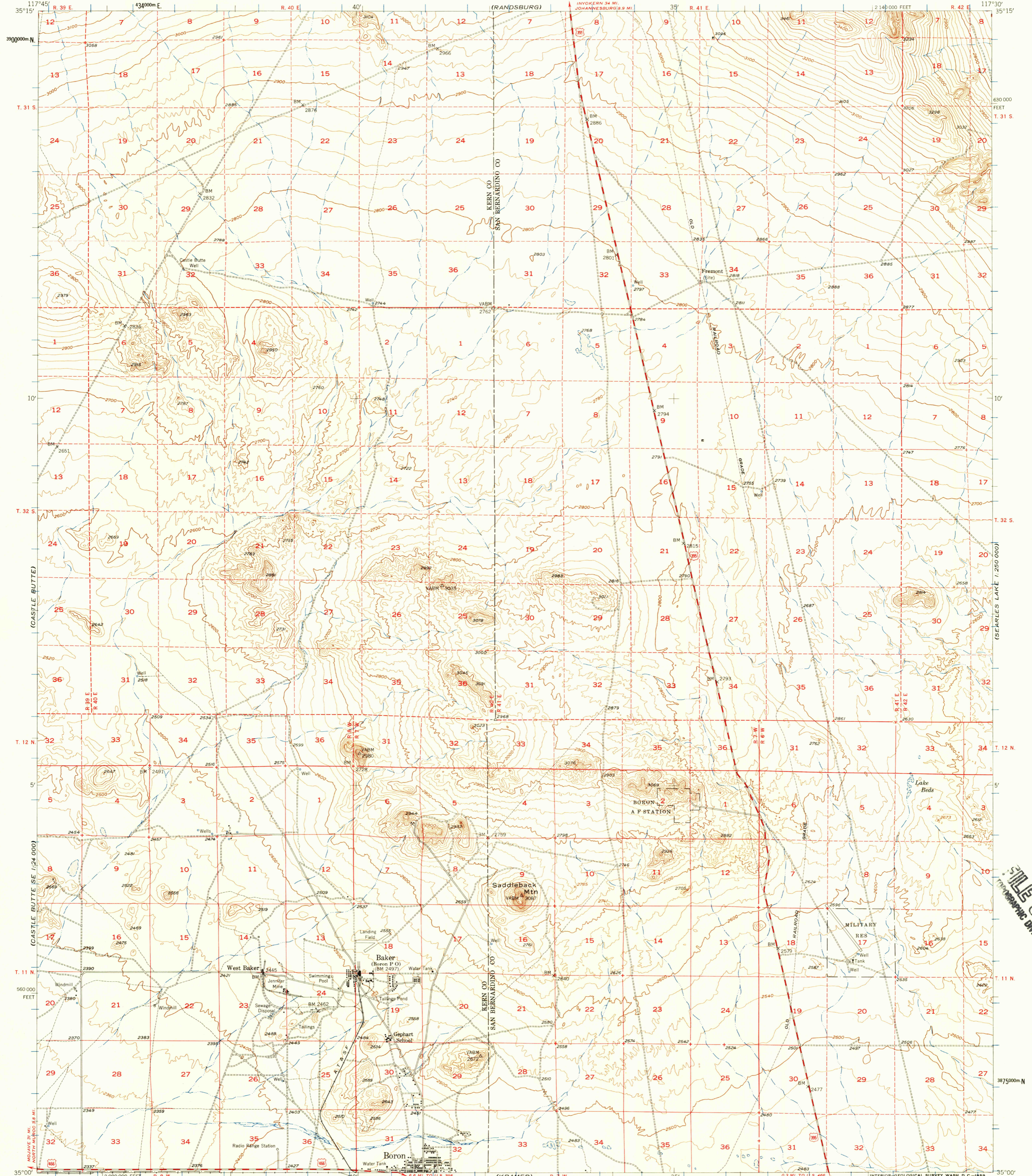


UNITED STATES
DEPARTMENT OF THE INTERIOR
GEOLOGICAL SURVEY

BORON QUADRANGLE
CALIFORNIA
15 MINUTE SERIES (TOPOGRAPHIC)



Mapped, edited, and published by the Geological Survey
Control by USGS and USC&GS

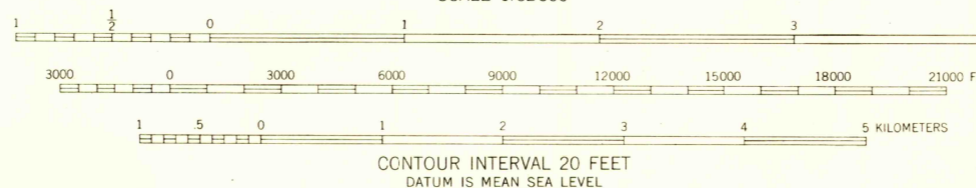
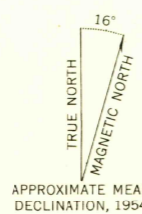
Topography from aerial photographs by photogrammetric methods
and by plane-table surveys 1932 and 1954. Aerial photographs taken 1952

Polyconic projection, 1927 North American datum
10,000-foot grid based on California coordinate system, zone 5

Dashed land lines indicate approximate locations

Unchecked elevations are shown in brown

1000-meter Universal Transverse Mercator grid ticks,
zone 11, shown in blue



USGS
Historical File
Topographic Division

ROAD CLASSIFICATION

| | | |
|-------------|---------------|-----------------|
| Heavy-duty | 4 LANE 6 LANE | Light duty |
| Medium-duty | 4 LANE 6 LANE | Unimproved dirt |

U.S. Route (red line with shield)
State Route (black line with circle)



U.S.G.S.
FILE COPY
TOPOGRAPHIC DIVISION

BORON, CALIF.
N 3500-W 11730/15
1954

THIS MAP COMPLIES WITH NATIONAL MAP ACCURACY STANDARDS
FOR SALE BY U.S. GEOLOGICAL SURVEY, DENVER 2, COLORADO OR WASHINGTON 25, D. C.
A FOLDER DESCRIBING TOPOGRAPHIC MAPS AND SYMBOLS IS AVAILABLE ON REQUEST

U.S.G.S.
FILE COPY
TOPOGRAPHIC DIVISION

APR - 8 1954

587