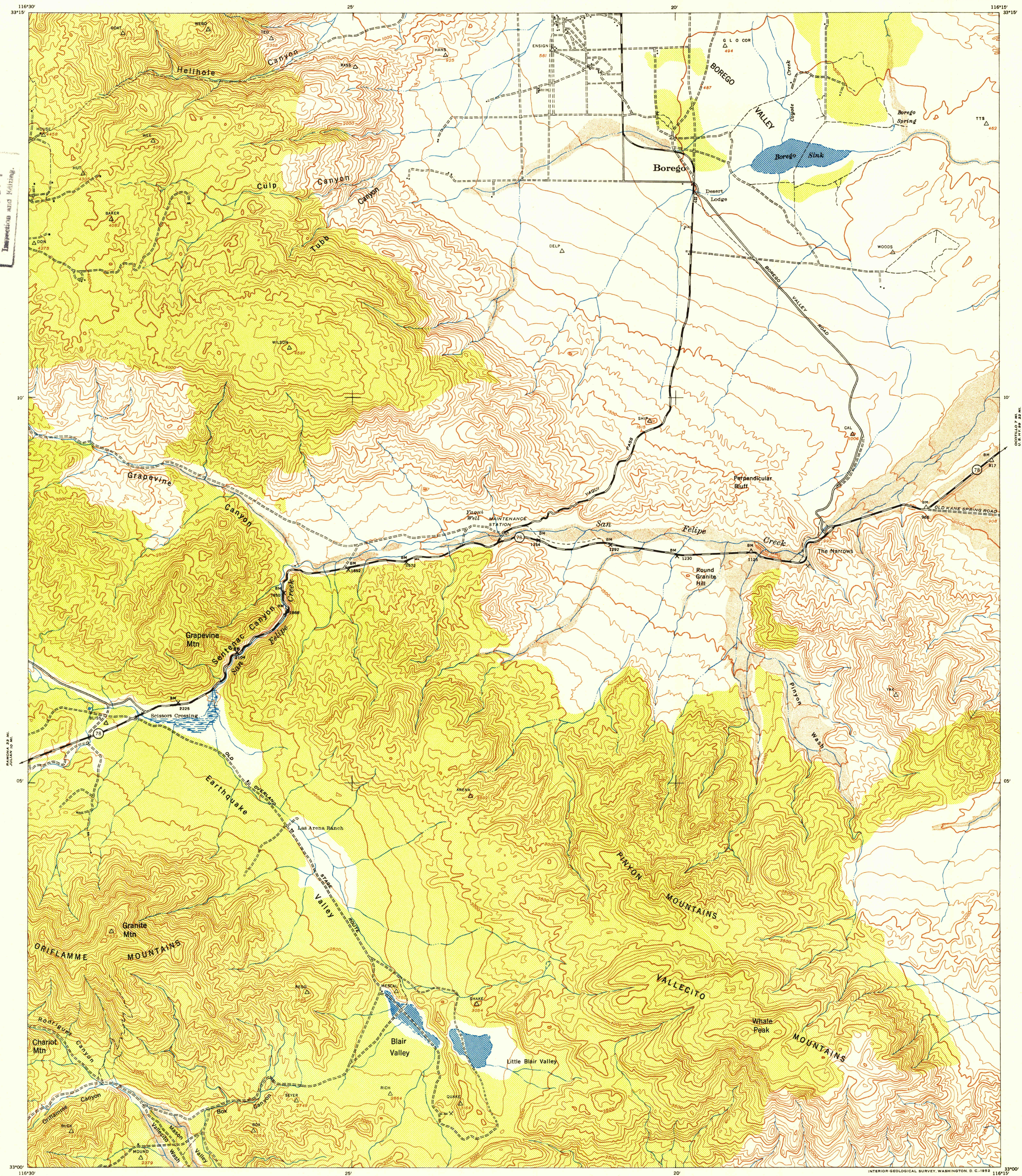
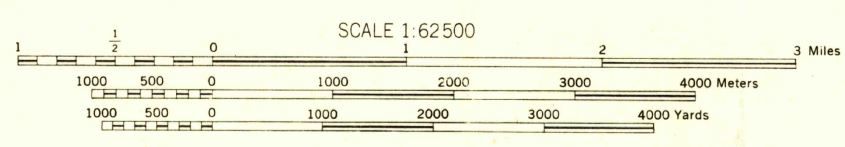


U. S. G. S.  
FILE COPY  
Inspection and Mailing



A.M.S. V795  
First Edition (AMS 1), 1942; (AMS 2), 1947.

Prepared under the direction of the Chief Engineers by the Army Map Service (AM), U. S. Army, Washington, D. C. Scale changed, marginal data revised and Universal Transverse Mercator Grid added, 1947. Copied in 1947 from California, 1:62,500, AMS, Borego, 1942. Original map compiled by stereophotogrammetric methods for the Army Map Service by the 29th Engineer Battalion, U. S. Army. Horizontal and vertical control by USCGS and 29th Engineer Battalion, U. S. Army. Aerial photography by U. S. Army Air Force, 1939.



SCALE 1:62,500  
CONTOUR INTERVAL 100 FEET  
DATUM IS MEAN SEA LEVEL (1929 ADJ.)  
TRANSVERSE MERCATOR PROJECTION  
1927 NORTH AMERICAN DATUM

REPRINTED FROM MILITARY EDITION FOR CIVIL USE 1952  
FOR SALE BY U. S. GEOLOGICAL SURVEY, FEDERAL CENTER, DENVER, COLORADO OR WASHINGTON 25, D. C.

LEGEND  
ROAD DATA 1942

Hard surface, heavy duty road, more than two lanes wide	Loose surface, graded, dry weather road
Hard surface, heavy duty road, two lanes wide; Federal route marker	Trail; Dirt road
Secondary hard surface, all weather road	Railroad in street; Carline in street
Two lanes wide; State route marker	RAILROADS
	Standard gauge Single track Double track
	Narrow gauge Single track Double track
	Single track carline Double track carline
BOUNDARIES	ABANDONED
International	Mine
State	Horizontal control sta.
County (with monument)	Bench mark
County subdivision	Spot elevation, feet
Reservation	MIL. RES.
Military reservation	School; Church
School; Church	Cemetery
Cemetery	Churchyard
Intermittent lake	Intermittent stream
Dam	Rapids; Falls
Large rapids and falls	Swamp, marsh
Swamp, marsh	Rocks awash at low tide
Rocks awash at low tide	Wharf, pier
Wharf, pier	Man-made shoreline

USGS  
Historical File  
Topographic Division  
U. S. G. S.  
FILE COPY  
Inspection and Mailing

INDEX TO BOUNDARIES

San Diego County
------------------

INDEX TO ADJOINING SHEETS

Sheet 2750 II (AMS 1942)	Sheet 2750 I (AMS 1942)	Sheet 2750 III (AMS 1942)
Sheet 2750 IV (AMS 1942)	Sheet 2750 V (AMS 1942)	Sheet 2750 VI (AMS 1942)

BOREGO, CALIFORNIA  
SAN DIEGO COUNTY  
N3300-W11615/15