

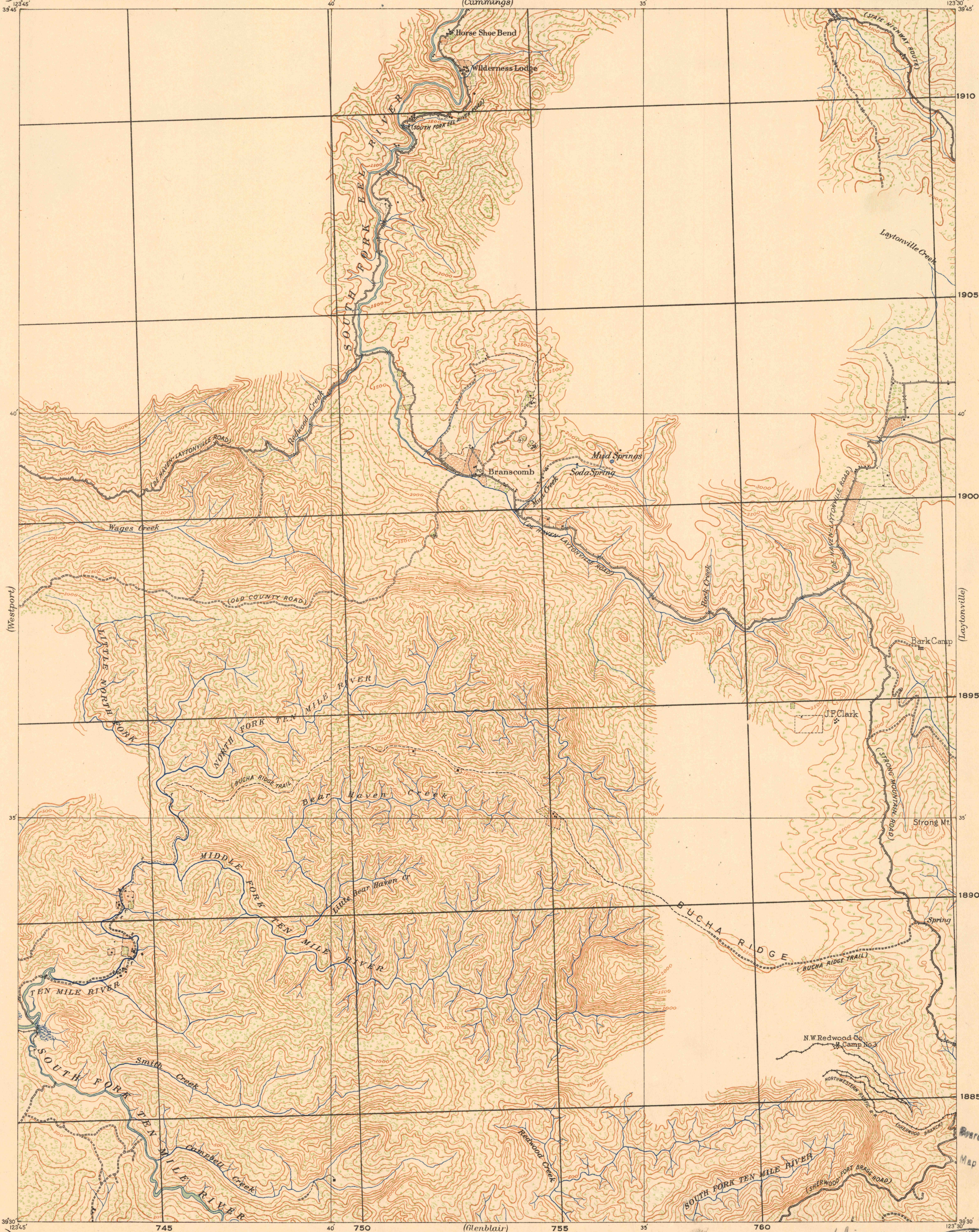
(Cape Rezaio)
123°45'
39°45'

CORPS OF ENGINEERS, U. S. ARMY
TACTICAL MAP

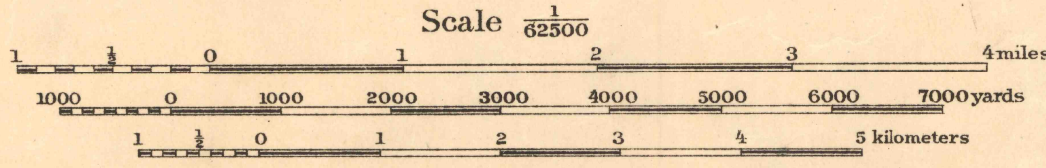
CONTROLLED RECONNAISSANCE
19-N-III-E/2

CALIFORNIA
BRANSCOMB QUADRANGLE
GRID ZONE "G"

(Cove) 123°30'
39°45'



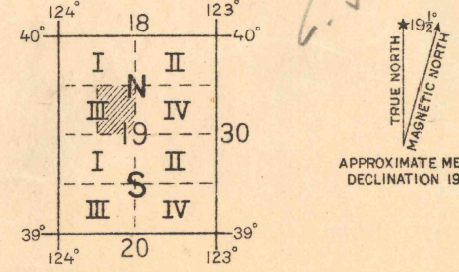
Col. Chas. L. Potter, Corps of Eng'rs., Department Engineer.
Captain R. Park, Corps of Eng'rs., Topographical Inspector.
1st. Lieut. Edw. R. Kimble, Corps of Eng'rs., in charge of party.
Surveyed in 1916.



Contour Interval 100 feet
Datum is mean sea level

NOTE: OFFICERS USING THIS MAP WILL MARK HEREON CORRECTIONS AND ADDITIONS WHICH COME TO THEIR ATTENTION AND MAIL DIRECT TO "THE CHIEF OF ENGINEERS, WASHINGTON, D.C."

FIVE THOUSAND YARD GRID COMPUTED FROM "GRID SYSTEM FOR PROGRESSIVE MAPS IN THE U.S." ZONE G, U.S.C. & G.S. SPECIAL PUBLICATION NO. 59.
(THE LAST THREE DIGITS OF THE GRID NUMBERS ARE OMITTED.)



BOARD OF SURVEYS & MAPS
RECEIVED
MAY 25 1921
Map Information Office

BRANSCOMB

Engineer Reproduction Plant, U. S. Army, Washington Barracks, D.C.
1921

Indicated
Back on
drawn map
1916

CAL