

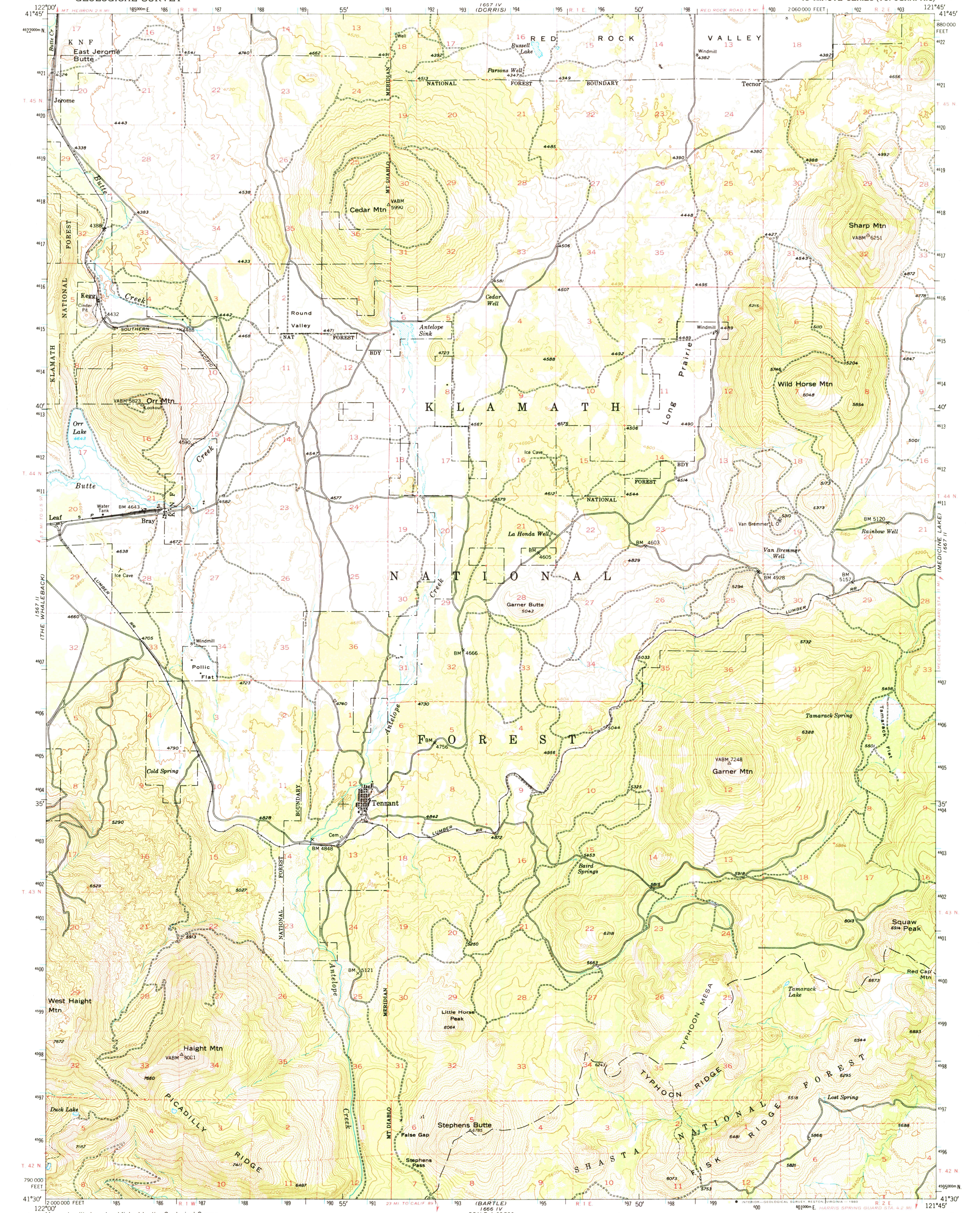
(WAGGON)

UNITED STATES
DEPARTMENT OF THE INTERIOR
GEOLOGICAL SURVEY

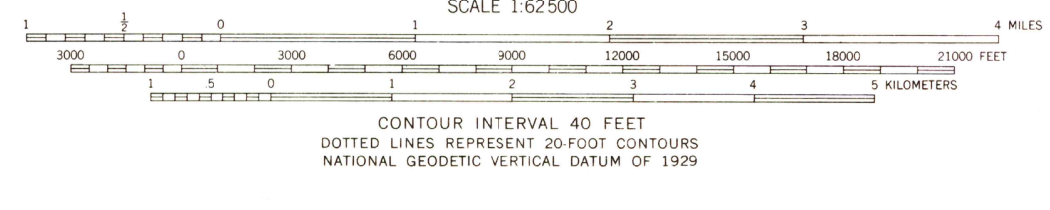
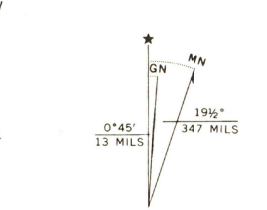
STATE OF CALIFORNIA
DEPARTMENT OF WATER RESOURCES

BRAY QUADRANGLE
CALIFORNIA-SISKIYOU CO.
15 MINUTE SERIES (TOPOGRAPHIC)

(HAMBOWE)



Mapped, edited, and published by the Geological Survey
Control by USGS and USC&GS
Topography by photogrammetric methods from aerial
photographs taken 1948. Field checked 1950.
Polyconic projection. 1927 North American datum
10,000-foot grid based on California coordinate system, zone 1
1000-meter Universal Transverse Mercator grid ticks,
zone 10, shown in blue
To place on the predicted North American Datum 1983
move the projection lines 18 meters north and 93 meters east
There may be private inholdings within the boundaries of
the National or State reservations shown on this map
Where omitted, land lines have not been established



THIS MAP IS AVAILABLE IN BOTH SHADED RELIEF AND CONTOUR EDITIONS
THIS MAP COMPLIES WITH NATIONAL MAP ACCURACY STANDARDS
FOR SALE BY U.S. GEOLOGICAL SURVEY, DENVER, COLORADO 80225, OR RESTON, VIRGINIA 22092
A FOLDER DESCRIBING TOPOGRAPHIC MAPS AND SYMBOLS IS AVAILABLE ON REQUEST



USGS
Historical File
Topographic Division

ROAD CLASSIFICATION
Light-duty ————— Unimproved dirt - - - - -

BRAY, CALIF.
N4130-W12145/15

1950
MINOR CORRECTIONS MADE 1965
DMA 1667 III-SERIES V795

FEB 19 1988
1600