

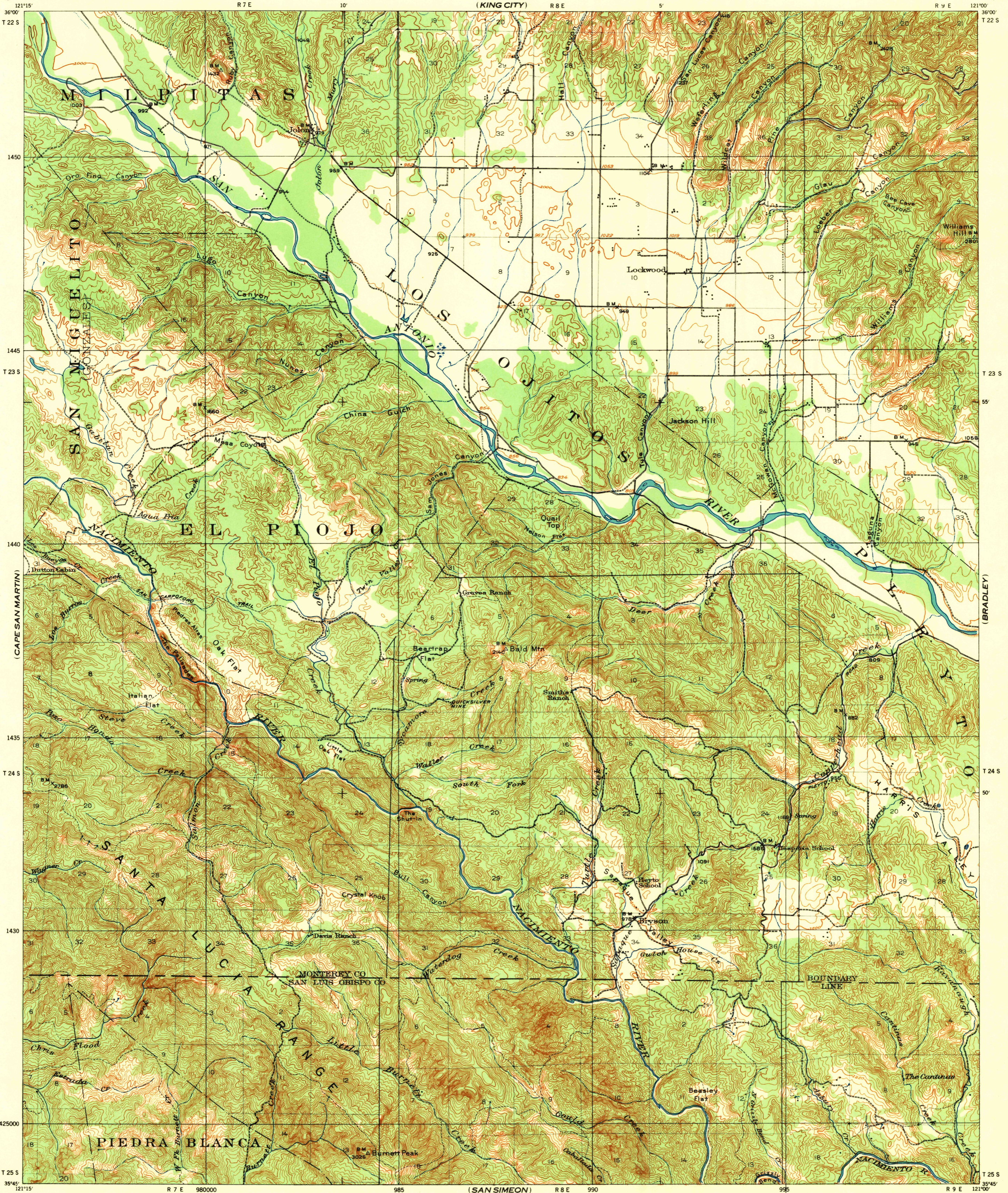
(JUNIPERO SERRA)

DEPARTMENT OF THE INTERIOR
U. S. GEOLOGICAL SURVEY

CORPS OF ENGINEERS, U. S. ARMY
TACTICAL MAP
(KING CITY)

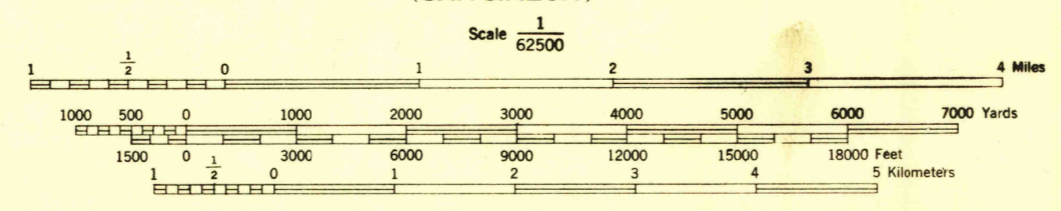
CALIFORNIA
BRYSON QUADRANGLE
GRID ZONE "G"

(PRIEST VALLEY)



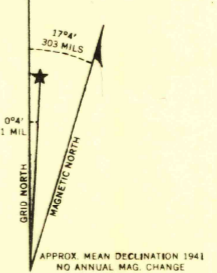
(PIEDRAS BLANCAS)

Prepared under the direction of the Chief of Engineers, U. S. Army.
Control by U. S. Geological Survey.
Topography by U. S. Geological Survey, 1917.
Revised from aerial photographs by Engineer Reproduction Plant, 1941.
Polyconic Projection, North American Datum.
ENGINEER REPRODUCTION PLANT, THE ARMY WAR COLLEGE, WASHINGTON, D. C.



CONTOUR INTERVAL 50 FEET
DATUM IS MEAN SEA LEVEL

GRID TABLES U. S. C. & G. S. SPECIAL PUBLICATION NO. 59
THE LAST THREE DIGITS OF THE GRID NUMBER ARE OBTAINED
NOTE: OFFICERS USING THIS MAP WILL WANT HEREIN CORRECTIONS AND ADDITIONS WHICH COME
TO THEIR ATTENTION AND MAIL DIRECT TO THE CHIEF OF ENGINEERS, WASHINGTON, D. C.



FILE COPY
Inspection and Mailing.

USCS
Historical File
Topographic Division

BRYSON, CALIF.
N3545-W12100/15

(ADELAIDA)