

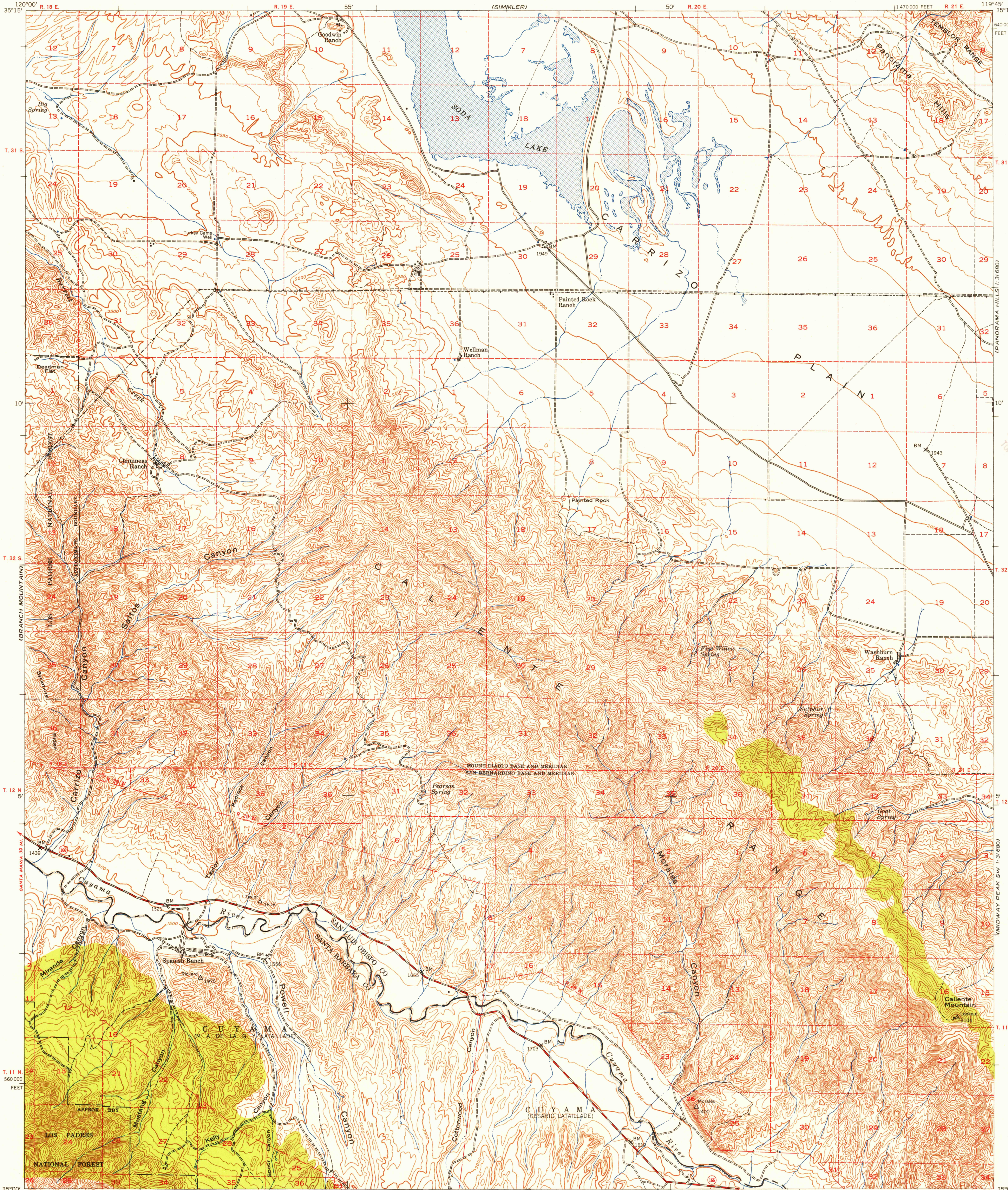
(LA PANZA)

UNITED STATES  
DEPARTMENT OF THE INTERIOR  
GEOLOGICAL SURVEY

UNITED STATES  
DEPARTMENT OF THE ARMY  
CORPS OF ENGINEERS  
(SIMMLER)

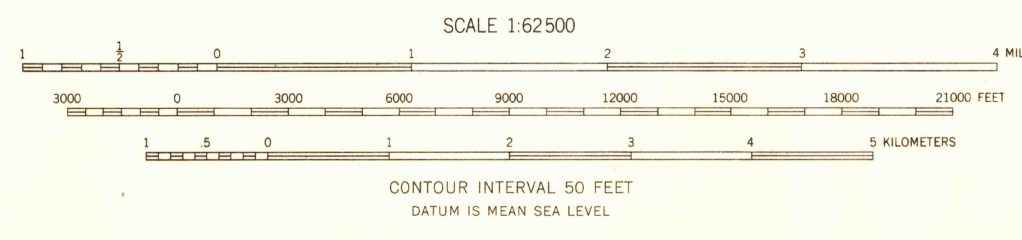
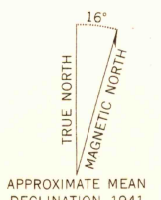
CALIENTE MOUNTAIN QUADRANGLE  
CALIFORNIA  
15 MINUTE SERIES (TOPOGRAPHIC)

(REWARD 1:24000)



U.S.G.S.  
FILE COPY  
TOPOGRAPHIC DIVISION

Map by the Army Map Service  
Published for civil use by the Geological Survey  
Control by USGS, USC&GS, USCE, and USFS  
Topography from aerial photographs by stereophotogrammetric methods. Aerial photographs taken 1941  
Polyconic projection. 1927 North American datum  
10,000-foot grid based on California coordinate system, zone 5  
Dashed land lines indicate approximate locations  
No distinction is made between barns, dwellings, commercial and industrial buildings



USGS  
Historical File  
Topographic Division

ROAD CLASSIFICATION 1943

Heavy-duty	Light-duty
Medium-duty	Unimproved dirt

U. S. Route      State Route



U.S.G.S. CALIENTE MOUNTAIN, CALIF.  
N 3500-W 11945/15  
1941

FOR SALE BY U. S. GEOLOGICAL SURVEY, DENVER 2, COLORADO OR WASHINGTON 25, D. C.  
A FOLDER DESCRIBING TOPOGRAPHIC MAPS AND SYMBOLS IS AVAILABLE ON REQUEST

NOV 16 1956  
3175