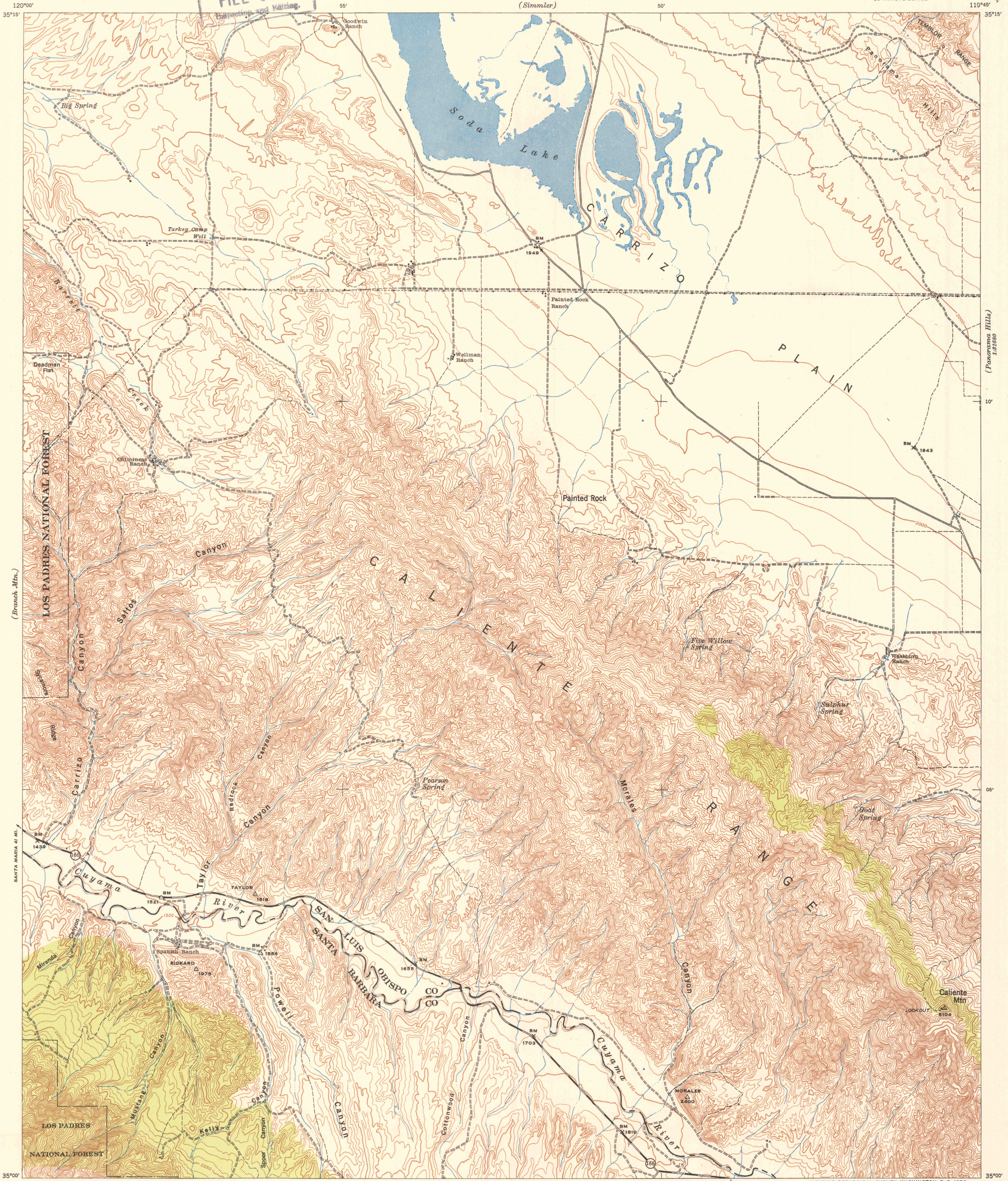


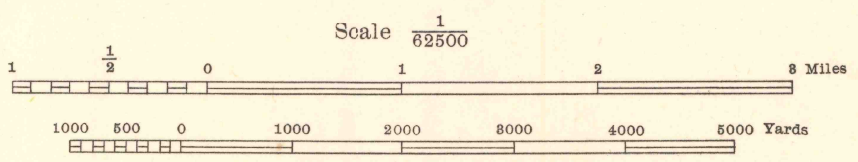
(La Panza)

U.S.G.S. FILE COPY

(Olig. 1:21680)



Prepared under the direction of the Chief of Engineers, U. S. Army, 1942. Horizontal control by U. S. Geological Survey, 1907, 1908, U. S. Coast and Geodetic Survey, 1934, 29th Engineers, U. S. Army, 1941 and U. S. Forest Service, 1942. Vertical control by U. S. Geological Survey, 1907, 1908, U. S. Coast and Geodetic Survey, 1934, 29th Engineers, U. S. Army, 1941 and U. S. Forest Service, 1942. Topography by 29th Engineers, U. S. Army, 1942, utilizing multiplex aero-projectors from Tande T-3A (5 lens) aerial photographs. Photography by 2nd Photographic Squadron, Air Corps, U. S. Army, 1941. Polyconic Projection, North American 1927 Datum.



ROAD CLASSIFICATIONS
Dependable hard surface, heavy duty road
Secondary, hard surface, all weather road
Loose surface graded, dry weather road
Dirt road
U. S. Route 101
State Route 166
More than two lanes indicated by note with tick at point of change.
Road Data 1943

TRUE NORTH
MAGNETIC NORTH
APPROXIMATE MEAN DECLINATION, 1943

U.S.G.S. Historical File
FILE COPY
Topographic Division
Inspection and Mapping