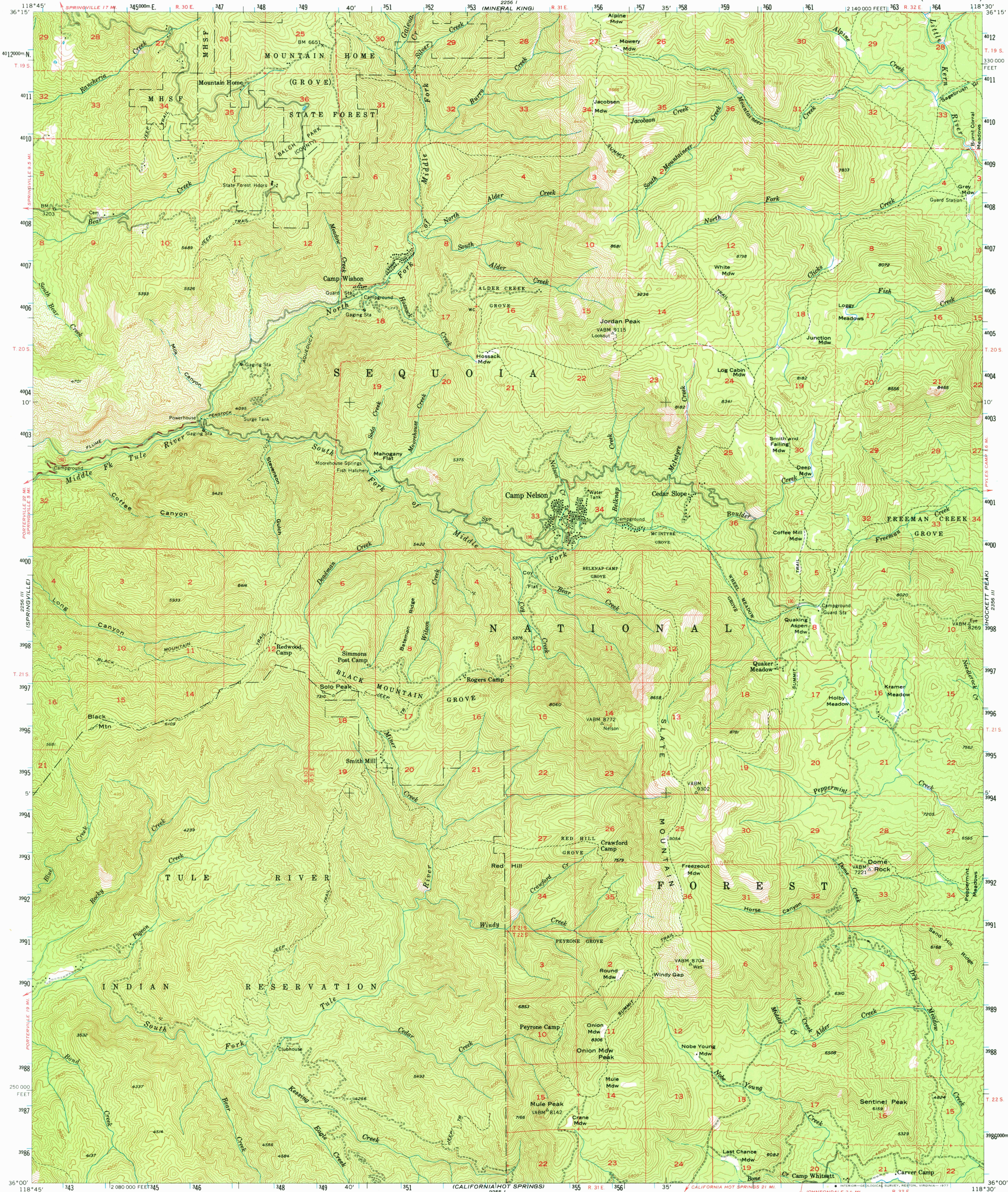
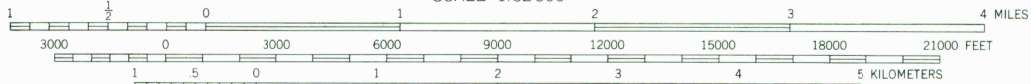
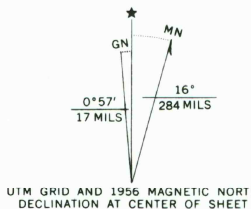


UNITED STATES
DEPARTMENT OF THE INTERIOR
GEOLOGICAL SURVEY

CAMP NELSON QUADRANGLE
CALIFORNIA—TULARE CO.
15 MINUTE SERIES (TOPOGRAPHIC)



Mapped, edited, and published by the Geological Survey
Control by USGS, USC&GS, USFS
Topography from aerial photographs by photogrammetric methods
by USFS, 1954, and USGS, 1956
Aerial photographs taken 1954 Field check 1956
Polyconic projection. 1927 North American datum
10,000-foot grid based on California coordinate system, zone 4
1000-meter Universal Transverse Mercator grid ticks,
zone 11, shown in blue
Dashed land lines indicate approximate locations
Unchecked elevations are shown in brown
Groves indicated by name on this map are
Sierra Redwoods-Sequoia Gigantea
National Forest shown by proclamation boundary
Private ownership not shown within National Forest



CONTOUR INTERVAL 80 FEET
NATIONAL GEODETIC VERTICAL DATUM OF 1929

THIS MAP COMPLIES WITH NATIONAL MAP ACCURACY STANDARDS
FOR SALE BY U. S. GEOLOGICAL SURVEY, DENVER, COLORADO 80225, OR RESTON, VIRGINIA 22092
A FOLDER DESCRIBING TOPOGRAPHIC MAPS AND SYMBOLS IS AVAILABLE ON REQUEST

ROAD CLASSIFICATION
Medium-duty ——— Light-duty ———
Unimproved dirt ———
State Route ———



CAMP NELSON, CALIF.
N 3600 — W 11830 / 15

1956
AMS 2256 II—SERIES V795

USGS
Historical File
Topographic Division

APR 12 1971

181300