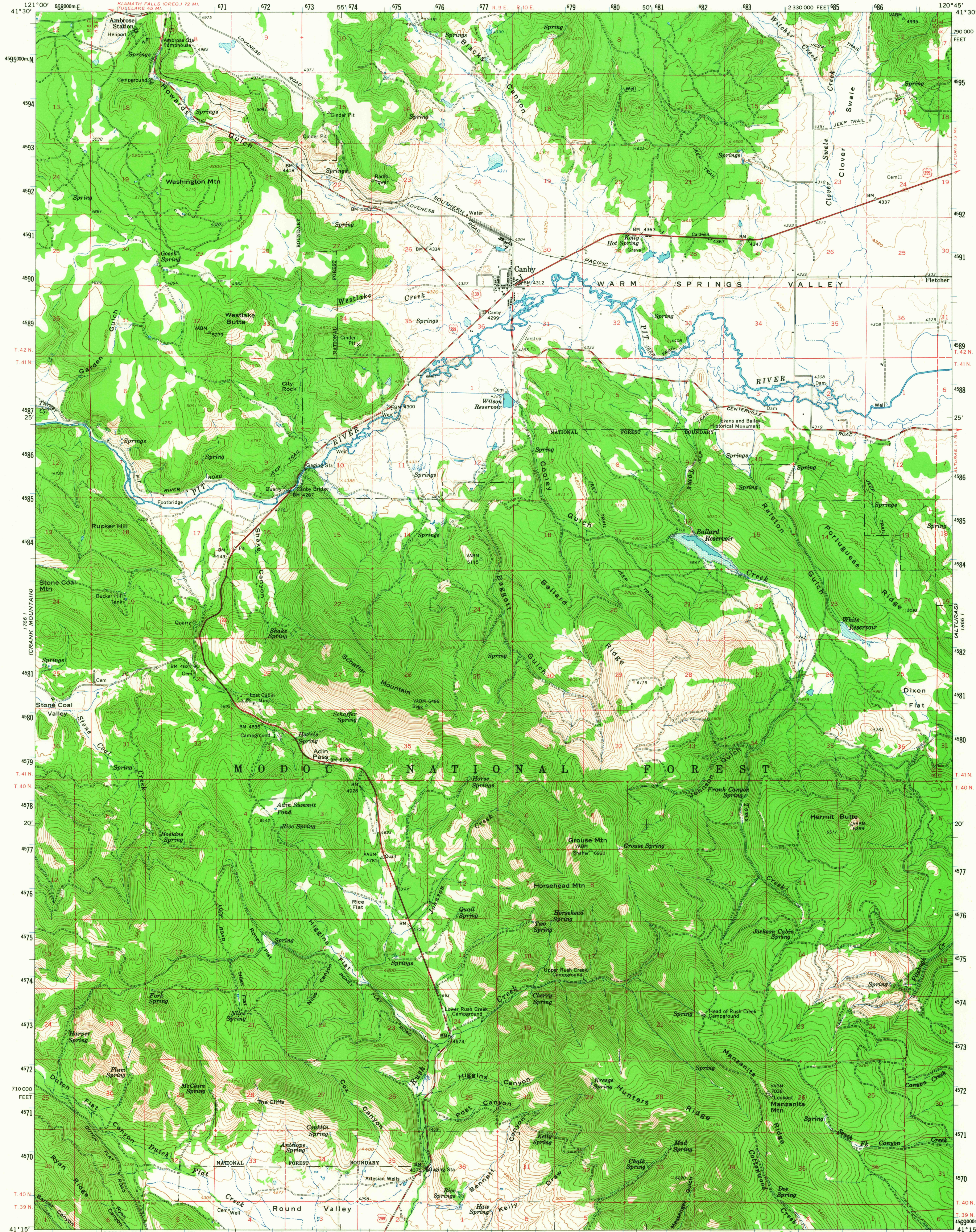
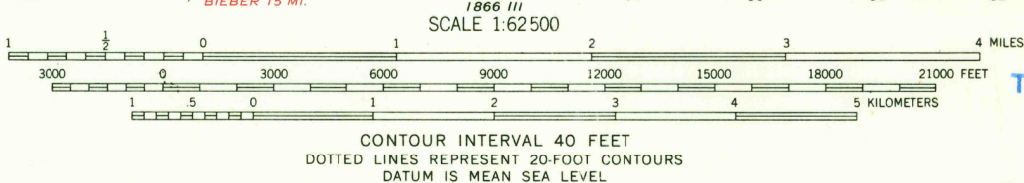
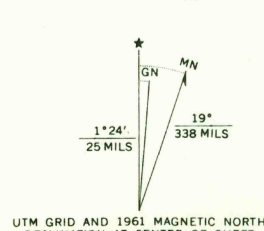


UNITED STATES  
DEPARTMENT OF THE INTERIOR  
GEOLOGICAL SURVEY

CANBY QUADRANGLE  
CALIFORNIA—MODOC CO.  
15 MINUTE SERIES (TOPOGRAPHIC)



Maped, edited, and published by the Geological Survey  
Control by USGS and USC&GS  
Topography by photogrammetric methods from aerial  
photographs taken 1958 and planetable surveys 1961  
Polyconic projection. 1927 North American datum  
10,000-foot grid based on California coordinate system, zone 1  
1000-meter Universal Transverse Mercator grid ticks,  
zone 10, shown in blue  
Areas covered by dashed light-blue pattern are  
subject to controlled inundation



USGS  
Historical File  
Topographic Division

U.S.G.S.

FILE COPY  
QUADRANGLE LOCATION  
TOPOGRAPHIC DIVISION

ROAD CLASSIFICATION  
Heavy-duty ——— Light-duty ———  
Medium-duty ——— Unimproved dirt ———  
U.S. Route ——— State Route ———

CANBY, CALIF.  
N4115—W12045/15

1961

AMS 1866 IV—SERIES V795

7845  
MAR 14 1968