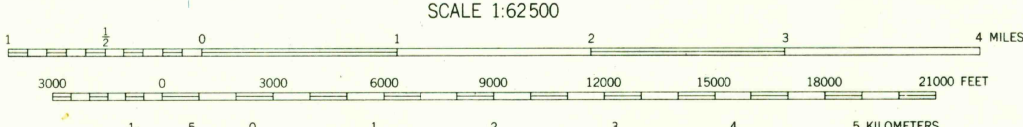
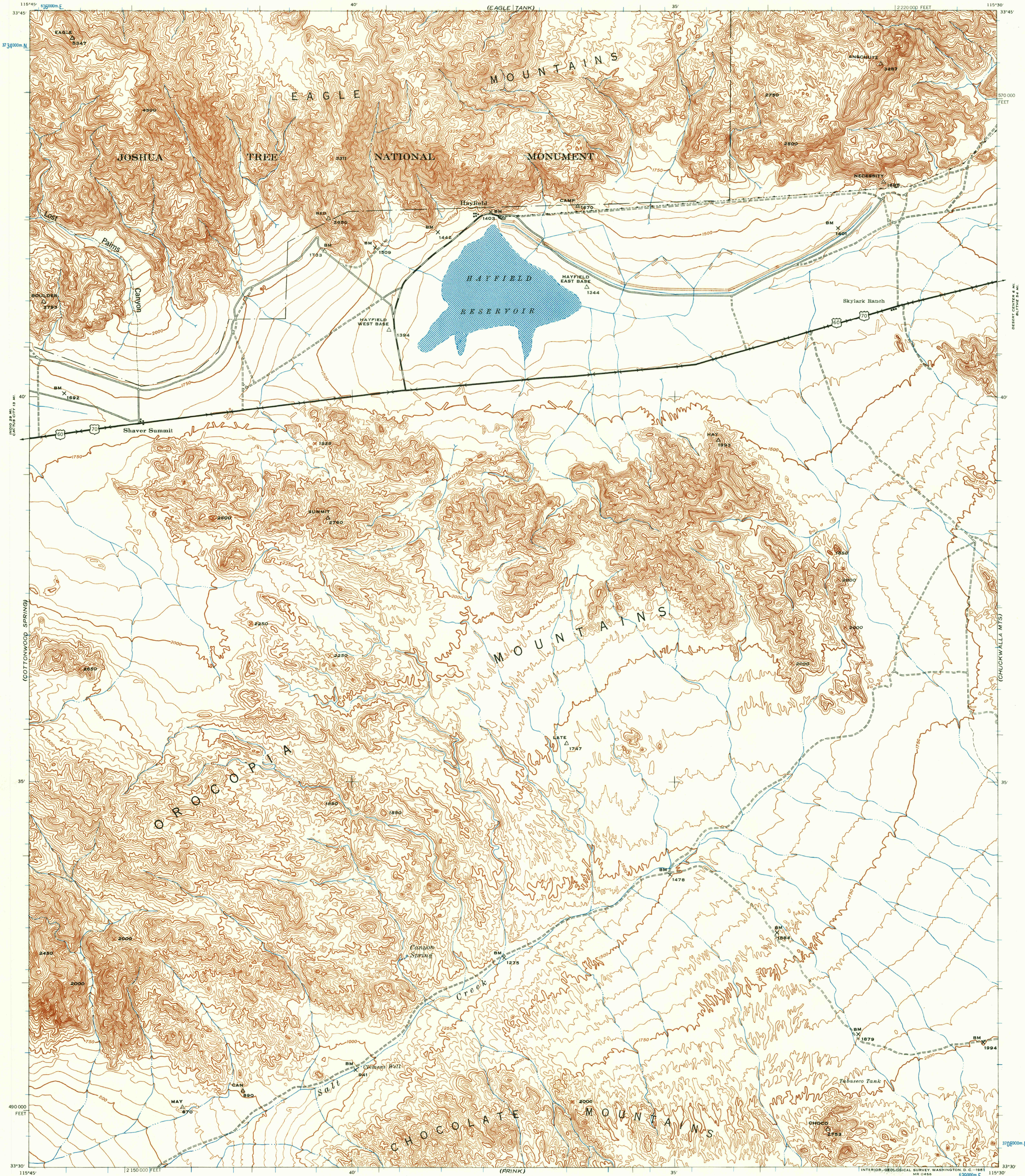


UNITED STATES
DEPARTMENT OF THE ARMY
CORPS OF ENGINEERS

CALIFORNIA
CANYON SPRING QUADRANGLE
15 MINUTE SERIES

CALIFORNIA



Prepared under the direction of the Chief of Engineers by the Army Map Service (AM), U. S. Army, Washington, D. C. Scale changed, marginal data revised and Universal Transverse Mercator Grid added, 1947. Copied in 1947 from California, 1:62,500, AMS, Canyon Spring, 1944. Original map compiled by stereophotogrammetric methods for the Army Map Service by the 29th Engineer Battalion, U. S. Army. Horizontal and vertical control by Metropolitan Water District of Southern California and the 29th Engineer Battalion, U. S. Army. Aerial photography by U. S. Army Air Force, 1940.

LEGEND
ROAD DATA 1943

Hard surface, heavy duty road, more than two lanes wide	3 LANE 4 LANE
Hard surface, heavy duty road, two lanes wide, Federal route marker	—
Secondary, hard surface, all weather road, two lanes wide, State route marker	—
Loose surface, graded, dry weather road	—
Trail, dirt road	—
Railroad in street; Carline in street	—

CONTOUR INTERVAL 50 FEET
DATUM IS MEAN SEA LEVEL (1929 ADJ.)
TRANSVERSE MERCATOR PROJECTION
1927 NORTH AMERICAN DATUM
10,000-FOOT GRID TICKS, CALIFORNIA PLANE COORDINATE SYSTEM, ZONE 6, SHOWN IN BLACK
1000-METER GRID TICKS, UNIVERSAL TRANSVERSE MERCATOR SYSTEM, ZONE 11, SHOWN IN BLUE

REPRINTED FROM MILITARY EDITION FOR CIVIL USE
FOR SALE BY U. S. GEOLOGICAL SURVEY, DENVER 25, COLORADO OR WASHINGTON 25, D. C.
A FOLDER DESCRIBING TOPOGRAPHIC MAPS AND SYMBOLS IS AVAILABLE ON REQUEST

USGS
Historical File
Topographic Division

U.S.G.S.
FILE COPY
TOPOGRAPHIC DIVISION

CANYON SPRING, CALIFORNIA
RIVERSIDE COUNTY
N3330-W11530/15
1940

NAME CHANGED TO HAYFIELD

2480

JAN 17 1967