

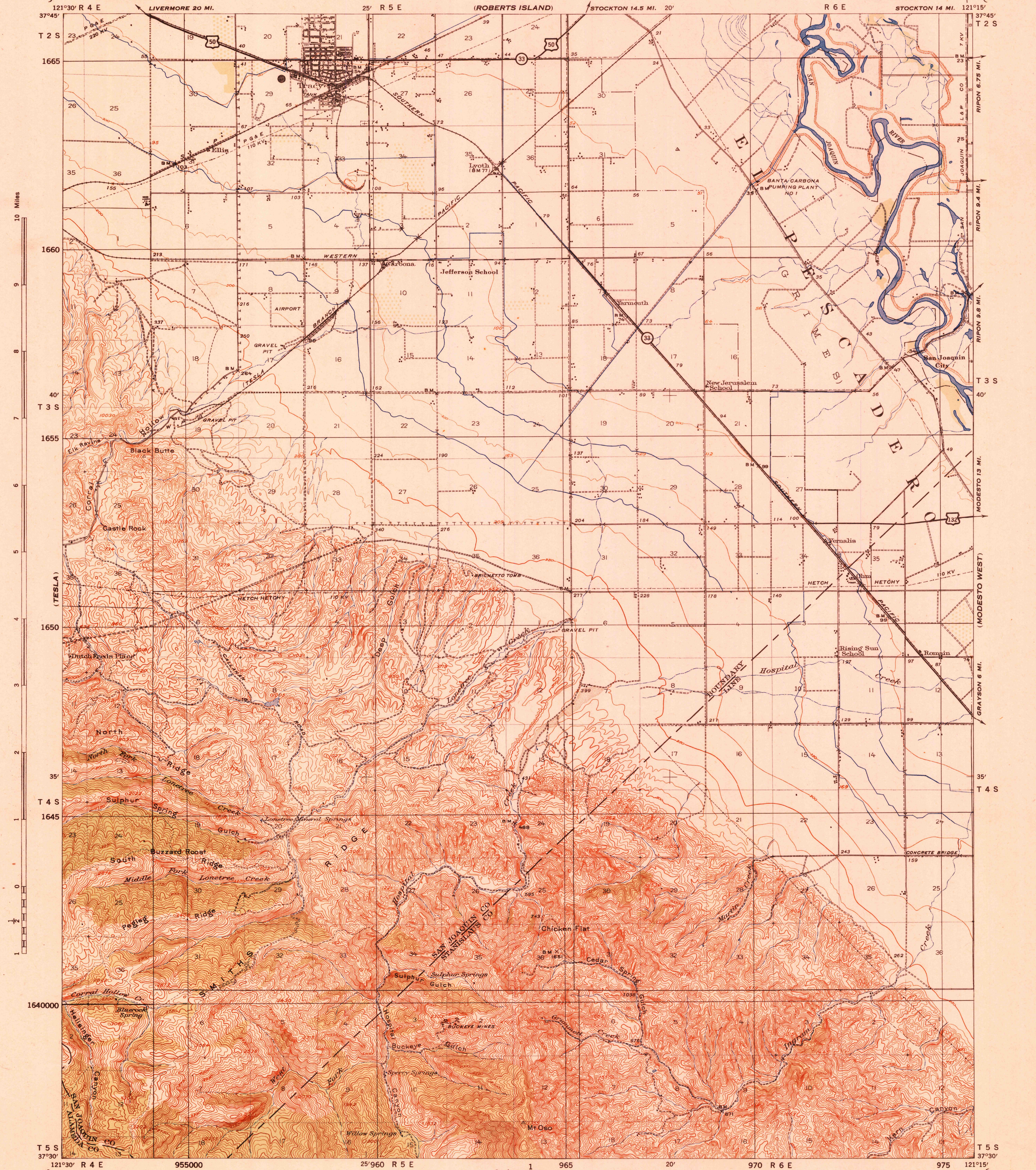
CALIFORNIA
CARBONA QUADRANGLE

GRID ZONE "G"

WAR DEPARTMENT
CORPS OF ENGINEERS, U. S. ARMY

CALIFORNIA
CARBONA QUADRANGLE

GRID ZONE "G"



Work Projects Administration Project.
Prepared under the direction of the Chief of Engineers, U. S. Army, 1939-40.
Control by the U. S. Coast and Geodetic Survey, Corps of Engineers, U. S. Army,
and U. S. Geological Survey.
Topography by U. S. Geological Survey in cooperation with the State of California.
Surveyed in 1912-13 and 1919.
Revised from single lens vertical aerial photographs by Engineer, Ninth Corps Area.
Aerial photography by Agriculture Adjustment Administration 1937.
Polyconic Projection, North American Datum.

ROAD CLASSIFICATION
Dependable hard surface, heavy-duty road. ——— U. S. Route 160
Secondary, hard surface, all-weather road. ——— State Route 30
Unimproved road. - - - - -
More than two lanes indicated by note along road with tick at point of change. 3 LANE 4 LANE

Scale 1/62500
1 1/2 0 1 2 3 Miles
1000 500 0 1000 2000 3000 4000 5000 Yards
CONTOUR INTERVAL 50 FEET
DATUM IS MEAN SEA LEVEL
FIVE THOUSAND YARD GRID COMPUTED FROM "GRID SYSTEM FOR PROGRESSIVE MAPS
IN THE U. S." ZONE G, U. S. C. & G. S. SPECIAL PUBLICATION NO. 59
THE LAST THREE DIGITS OF THE GRID NUMBERS ARE OMITTED
NOTE: OFFICERS USING THIS MAP WILL MARK HEREON CORRECTIONS AND ADDITIONS WHICH COME
TO THEIR ATTENTION AND MAIL DIRECT TO "THE CHIEF OF ENGINEERS, WASHINGTON, D. C."

ARMY MAP SERVICE, U. S. ARMY, WASHINGTON, D. C., 14845
1942
U. S. G. S.
FILE COPY
Inspection and Editing.
APPROXIMATE MEAN
DECLINATION 1942
ANNUAL MAGNETIC CHANGE 1'
DECREASE
USGS
Historical File
Topographic Division

CARBONA, CALIF.
N3730-W12115/15