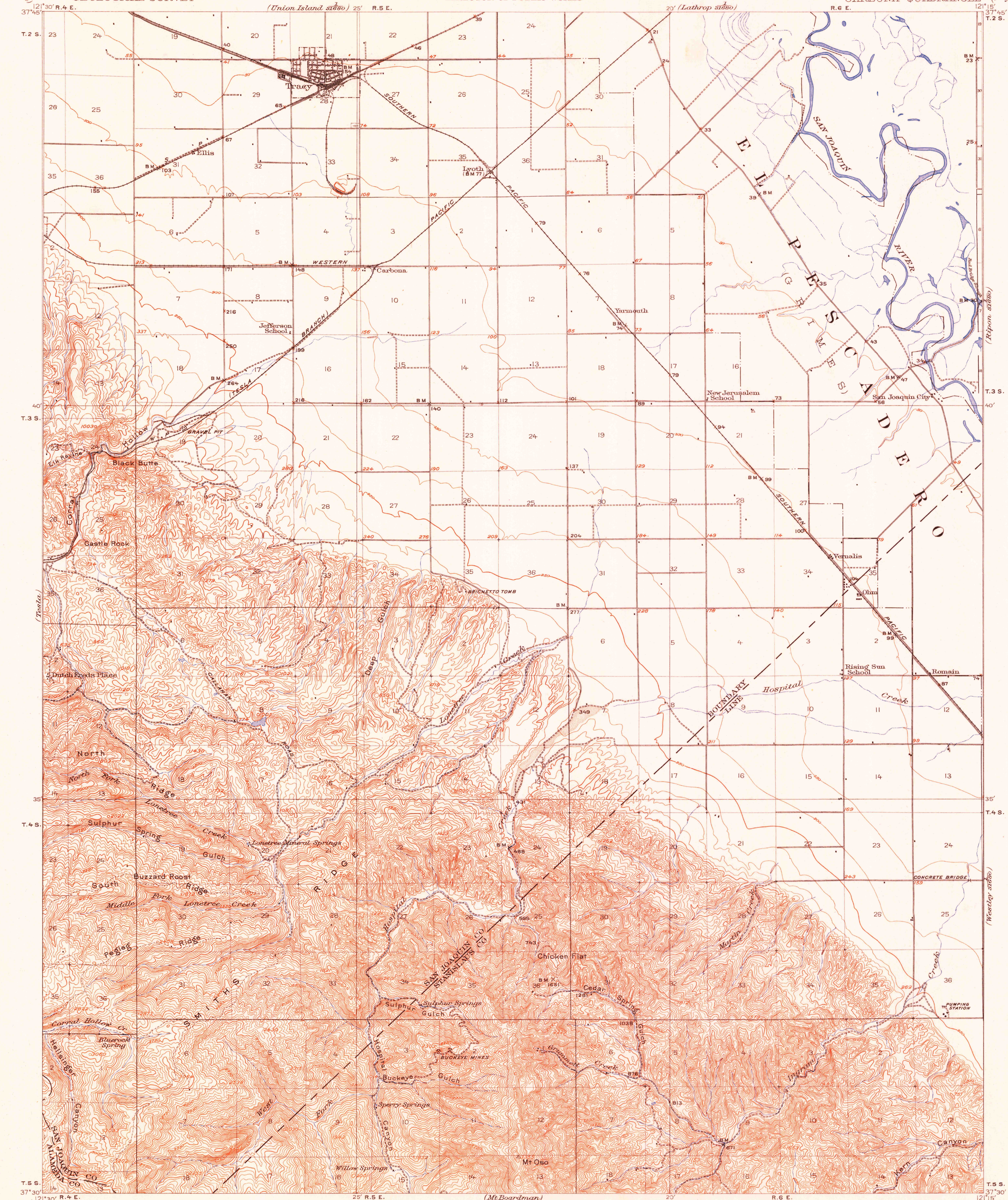


U. S. G. S.
FILE COPY
Inspection and Editing.

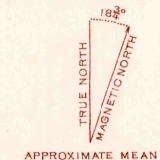
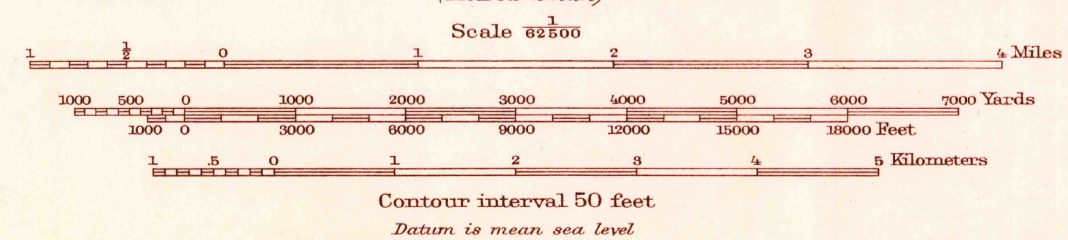
UNITED STATES
DEPARTMENT OF THE INTERIOR
GEOLOGICAL SURVEY

STATE OF CALIFORNIA
REPRESENTED BY THE
DIRECTOR OF PUBLIC WORKS

CALIFORNIA
CARBONA QUADRANGLE



R.B. Marshall, Chief Geographer.
Geo. R. Davis, Geographer in charge.
Topography by R.H. Sargent, Chas. H. Hartmann,
and R.F. Wilcox, and reduced from maps of
Tracy, Vernalis, and Romain quadrangles.
Control by U.S. Coast and Geodetic Survey, Corps of
Engineers U.S. Army, L.F. Biggs, C.F. Urquhart,
W.H. Monahan, D.S. Birkett, C.F. Semper, and S.E. Blout.
Surveyed in 1912-1913 and 1919.



Maps of the Tracy, Vernalis, and Romain
quadrangles, scale 1:31,680, contour
interval 5 feet, from more detailed surveys
of the area below the 300-foot contour,
are available.

CALIF.
CARBONA
Edition of 1922
reprinted 1951
N3730-W1215/15

FOR SALE BY U.S. GEOLOGICAL SURVEY, FEDERAL CENTER, DENVER, COLORADO OR WASHINGTON 25, D.C.
A FOLDER DESCRIBING TOPOGRAPHIC MAPS AND SYMBOLS IS AVAILABLE ON REQUEST

USGS
Historical File
Topographic Division

U. S. G. S.
FILE COPY
Inspection and Editing.