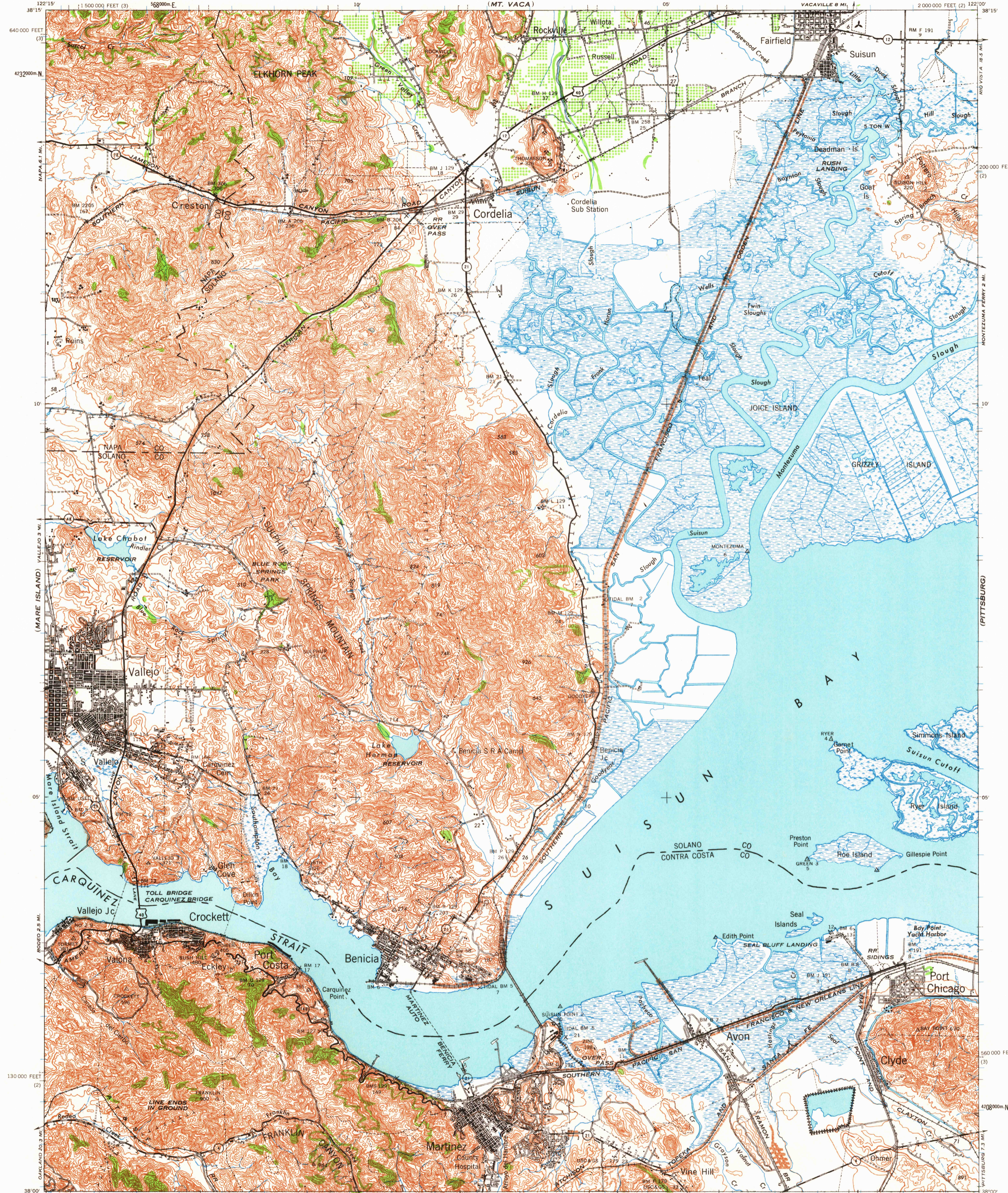


(SONOMA)

(VACAVILLE)

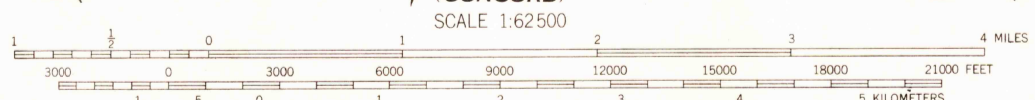


(SAN FRANCISCO)

(MT. DIABLO)

Work Projects Administration, D. P. 165-2-97-45, New York, N. Y.
Engineer Reproduction Plant, direction of Chief of Engineers, U. S. Army.
Surveyed by U.S.G.S., control by U.S.C. & G.S. 1932-37, and New Jersey G.C.S. 1935-8.
Revision by 30th Eng. Bn. U.S. Army from tandem T-3A photos by 1st Photo Sq. Air Corps, U.S. Army 1940.
Polyconic Projection, North American Datum, 1927.

ROAD CLASSIFICATIONS
Dependable hard surface, heavy duty road. ——— U. S. Route (40)
Loose surface graded, dry weather road. ——— U. S. Route (40)
Secondary, hard surface, all weather road. ——— State Route (154)
Unimproved road. ——— State Route (154)
Multiple lanes indicated by note along road with tick at point of change. ——— 3 LANE | 4 LANE

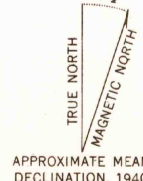


CONTOUR INTERVAL 25 FEET
DATUM IS MEAN SEA LEVEL

10,000-FOOT GRID TICKS, CALIFORNIA PLANE COORDINATE SYSTEM, ZONES 2 AND 3, SHOWN IN BLACK
1000-METER GRID TICKS, UNIVERSAL TRANSVERSE MERCATOR SYSTEM, ZONE 10, SHOWN IN BLUE

REPRINTED FROM MILITARY EDITION FOR CIVIL USE
FOR SALE BY U. S. GEOLOGICAL SURVEY, DENVER 25, COLORADO OR WASHINGTON 25, D. C.
A FOLDER DESCRIBING TOPOGRAPHIC MAPS AND SYMBOLS IS AVAILABLE ON REQUEST

USG CONCORD
Historical File
Topographic Division



U.S. GEOLOGICAL SURVEY
FILE COPY
TOPOGRAPHIC DIVISION

This area also covered by 7.5 minute, 1:24,000-scale maps: Fairfield South 1949, Cordelia 1950, Benicia 1959, and Port Chicago 1959
CARQUINEZ STRAIT, CALIF.
N3800-W12200/15
1940

1315