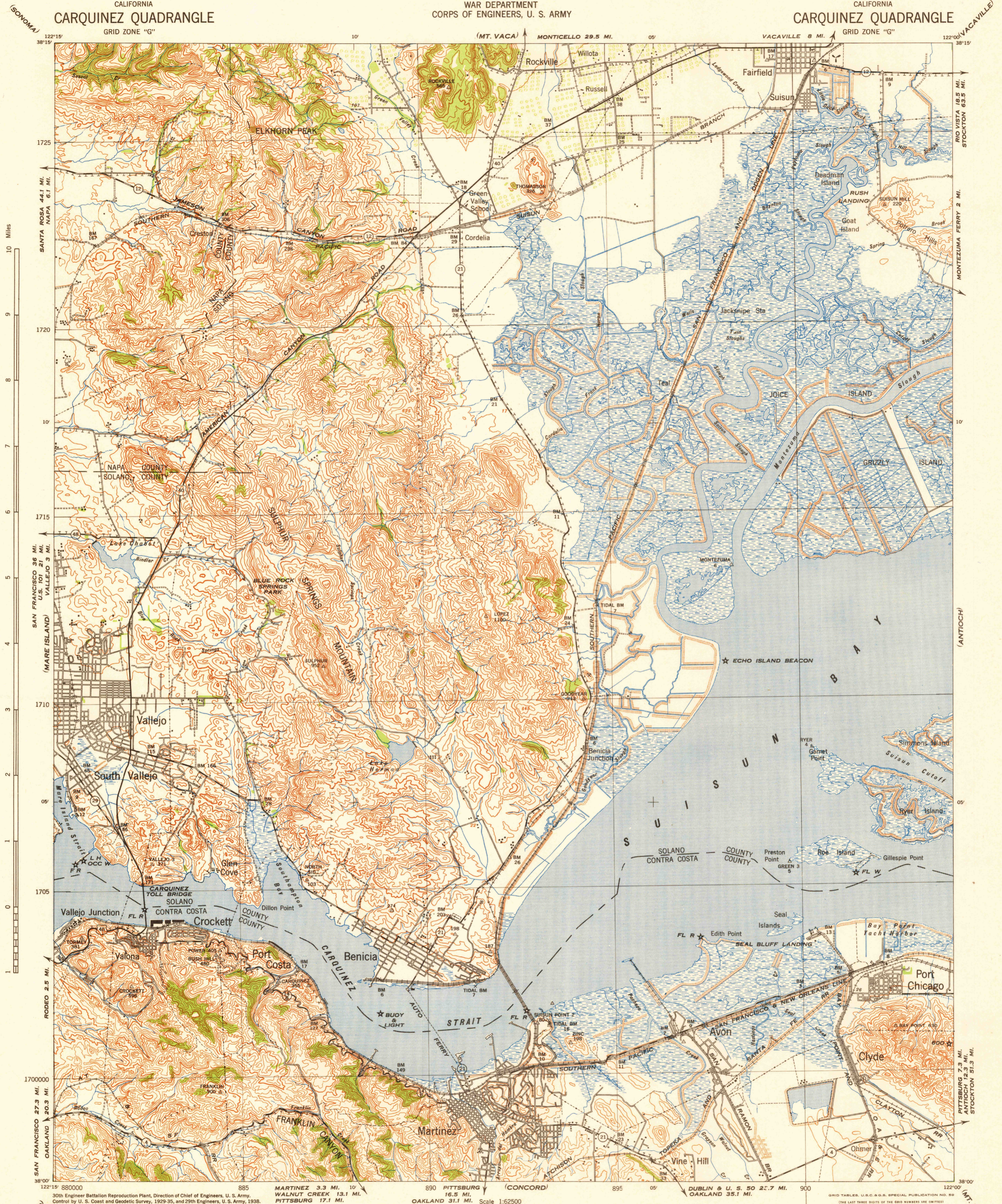


CALIFORNIA
CARQUINEZ QUADRANGLE
GRID ZONE "G"

WAR DEPARTMENT
CORPS OF ENGINEERS, U. S. ARMY

CALIFORNIA
CARQUINEZ QUADRANGLE
GRID ZONE "G"



30th Engineer Battalion Reproduction Plant, Direction of Chief of Engineers, U. S. Army.
Control by U. S. Coast and Geodetic Survey, 1929-35, and 29th Engineers, U. S. Army, 1938.
Topography by 30th Engineers, U. S. Army, using Multiplex Aero Projectors.
Aerial Photography by Air Corps, May, 1937.
Polyconic Projection, North American, 1927 Datum.
30TH ENGINEER BATTALION REPRODUCTION PLANT, FORT BELVOIR VA. 1942

ROAD CLASSIFICATION
Main Highway
Graded earth, gravel and stone
Brick, concrete, macadam and other hard surfaces
Unimproved
U. S. Route
State Route

Scale 1:62500
CONTOUR INTERVAL 50 FEET--DATUM IS MEAN SEA LEVEL (1929 ADJ.)
NOTE: OFFICERS USING THIS MAP WILL MARK HEREON CORRECTIONS AND ADDITIONS WHICH COME TO THEIR ATTENTION AND MAIL DIRECT TO "THE CHIEF OF ENGINEERS, WASHINGTON, D. C."

APPROX. MEAN DECLINATION 1942
ANNUAL MAG. CHANGE 0.8 0.2 MILLS DECREASE

CARQUINEZ, CALIF.
N3800-W12200/15

USCS
Historical File
Topographic Division

U.S.G.S.
FILE COPY
REPRODUCTION AND SALE

SEE CARQUINEZ STRAIT