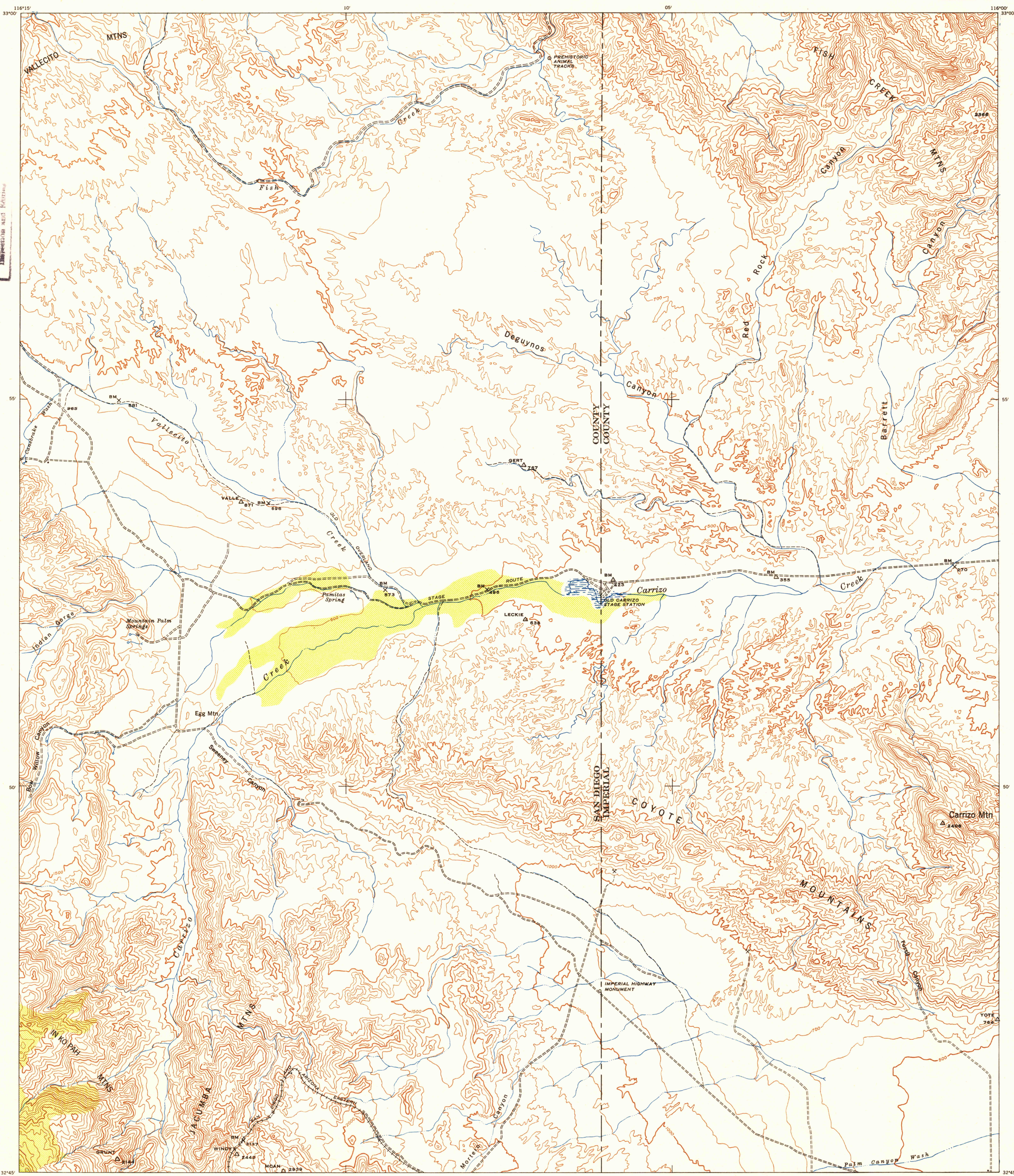
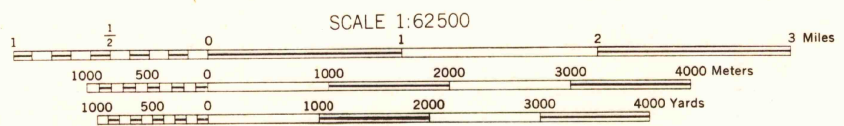


U.S. G.S.  
FILE COPY  
Imperious and Fading



A.M.S. V795  
First Edition (AMS 1), 1942; (AMS 3), 1947.

Prepared under the direction of the Chief of Engineers by the Army Map Service (AM), U. S. Army, Washington, D. C. Scale changed, marginal data revised and Universal Transverse Mercator Grid added, 1947. Copied in 1947 from California, 1:62,500, AMS, Carrizo Mtn., 1944. Original map compiled by stereophotogrammetric methods for the Army Map Service by the 29th Engineer Battalion, U. S. Army. Horizontal control by USCGS and the 29th Engineer Battalion, U. S. Army. Vertical control by the 29th Engineer Battalion, U. S. Army. Aerial photography by U. S. Army Air Force, 1939.



SCALE 1:62500  
CONTOUR INTERVAL 100 FEET  
DATUM IS MEAN SEA LEVEL (1929 ADJ.)  
TRANSVERSE MERCATOR PROJECTION

LEGEND

Hard surface, heavy duty road, more than two lanes wide	Loose surface, graded, dry weather road	
Hard surface, heavy duty road, two lanes wide; Federal route marker	Trail; Dirt road	
Secondary, hard surface, all-weather road, two lanes wide; State route marker	Railroad in street; Carline in street	
RAILROADS	UNDER CONSTRUCTION	ABANDONED
Standard gauge	Single track	Double track
Narrow gauge	Single track	Double track
Single track carline	Double track carline	
BOUNDARIES		
International	Mine	Intermittent lake
State	Horizontal control site	Intermittent stream
County (with monument)	Bench mark	Dam
County subdivision	Spot elevation	Rapids; Falls
Reservation		Large rapids and falls
Military reservation		Swamp, marsh
School; Church		Rocks awash at low tide
Cemetery		Wharf, pier
Churchyard		Man-made shoreline

USGS  
Historical File  
Topographic Division

INDEX TO BOUNDARIES

A	B
---	---

INDEX TO ADJOINING SHEETS

116°30'	116°15'	116°00'	115°45'
33°00'	32°45'	32°30'	32°15'

A. San Diego County  
B. Imperial County

Sheet 2749 IV falls within No. 11-11.  
AMS 1952, 1:250,000

TRUE NORTH  
MAGNETIC NORTH  
APPROXIMATE MEAN DECLINATION, 1944

REPRINTED FROM MILITARY EDITION FOR CIVIL USE 1952  
FOR SALE BY U. S. GEOLOGICAL SURVEY, FEDERAL CENTER, DENVER, COLORADO OR WASHINGTON 25, D. C.

U.S. G.S.  
FILE COPY  
Imperious and Fading

OCT 2 1952  
CARRIZO MOUNTAIN, CALIFORNIA  
N3245-W11600/15