

(GROSS MOUNTAIN)

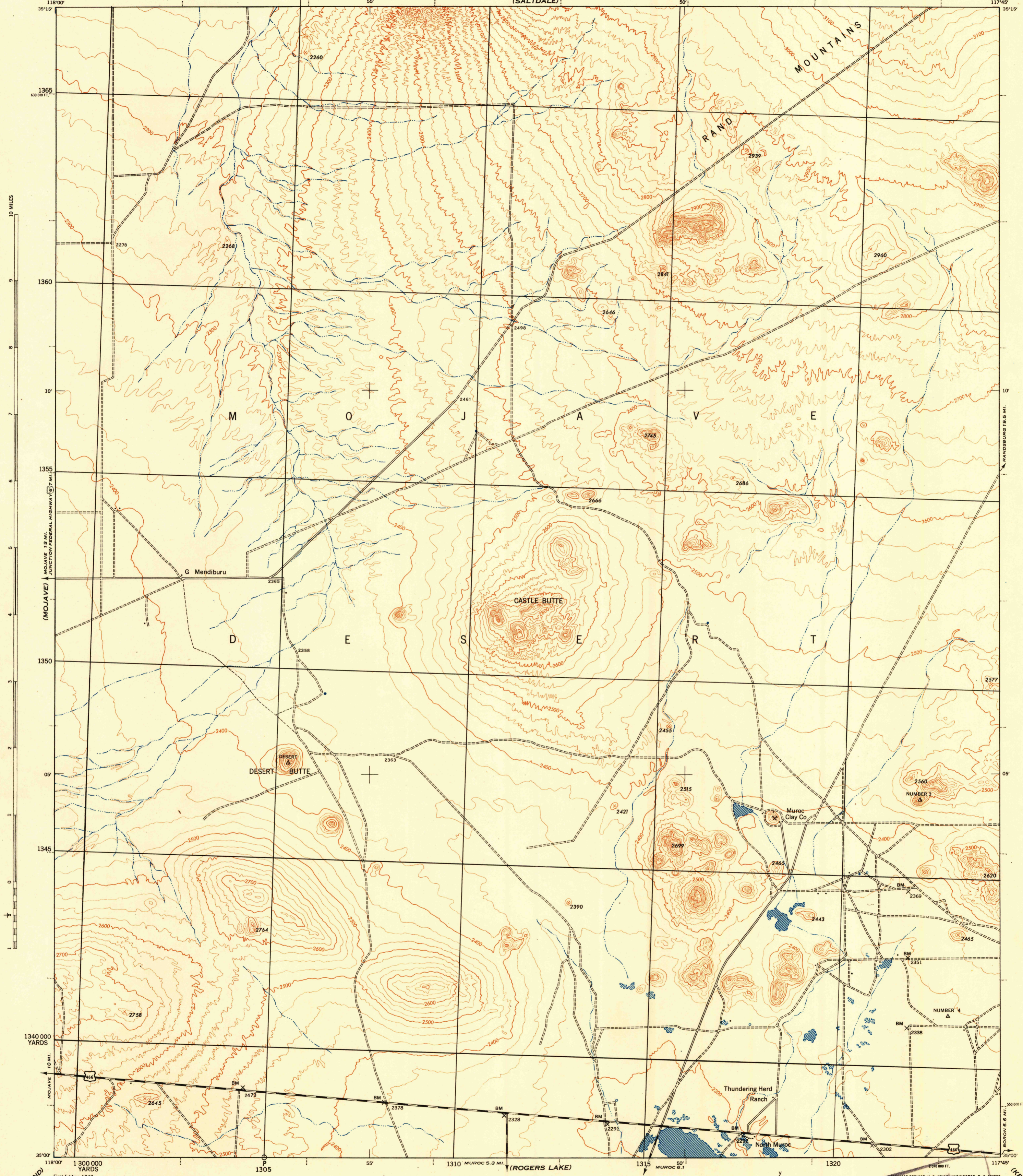
CALIFORNIA 1:62,500
KERN COUNTY

WAR DEPARTMENT
CORPS OF ENGINEERS, U. S. ARMY
(SALTDAL)

FIRST EDITION-AMS 1

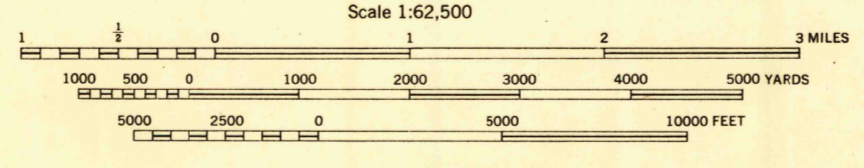
CASTLE BUTTE QUADRANGLE
15 MINUTE SERIES

(RANDSBERG)

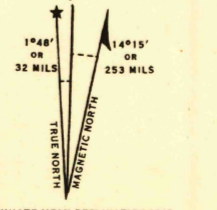


Prepared under the direction of the Chief of Engineers,
U. S. Army, 1943.
Control by U. S. C. & G. S., U. S. G. S. and Fairchild Aerial Surveys, Inc.,
Topography by Fairchild Aerial Surveys, Inc., by Stereophotogrammetric Process.
Photography by Fairchild Aerial Surveys, Inc., Los Angeles, California, 1943.
Polyconic Projection, 1927 North American Datum.

ROAD CLASSIFICATION 1943
 Dependable hard-surface, heavy-duty road. U. S. Route 180
 Secondary, hard surface, all-weather road. 30
 Dirt Road State Route 30
 More than two lanes indicated by tick along road with tick at point of change. 3 LANE (4 LANE)



CONTOUR INTERVAL 25 FEET
 DATUM IS MEAN SEA LEVEL
 FIVE THOUSAND YARD GRID COMPUTED FROM "GRID SYSTEM FOR PROGRESSIVE MAPS IN THE U. S." ZONE G, U. S. C. & G. S. SPECIAL PUBLICATION NO. 59
 THE LAST THREE DIGITS OF THE GRID NUMBERS ARE OMITTED
 CALIFORNIA STATE GRID ZONE 9 IS INDICATED BY DOTTED TICKS OUTSIDE THE NEAT LINE AT 10,000 FOOT INTERVALS
 NOTE: OFFICERS USING THIS MAP WILL MARK HEREON CORRECTIONS AND ADDITIONS WHICH COME TO THEIR ATTENTION AND MAIL DIRECT TO "THE CHIEF OF ENGINEERS, WASHINGTON, D. C."



U. S. ARMY MAP SERVICE, U. S. ARMY, WASHINGTON, D. C. 10057
 1/44 M.L.
FILE COPY
 Inspection and Noting.

CASTLE BUTTE, CALIF.
 N3500-W11745/15

USCS
 Historical File
 Topographic Division

(KRAMER)