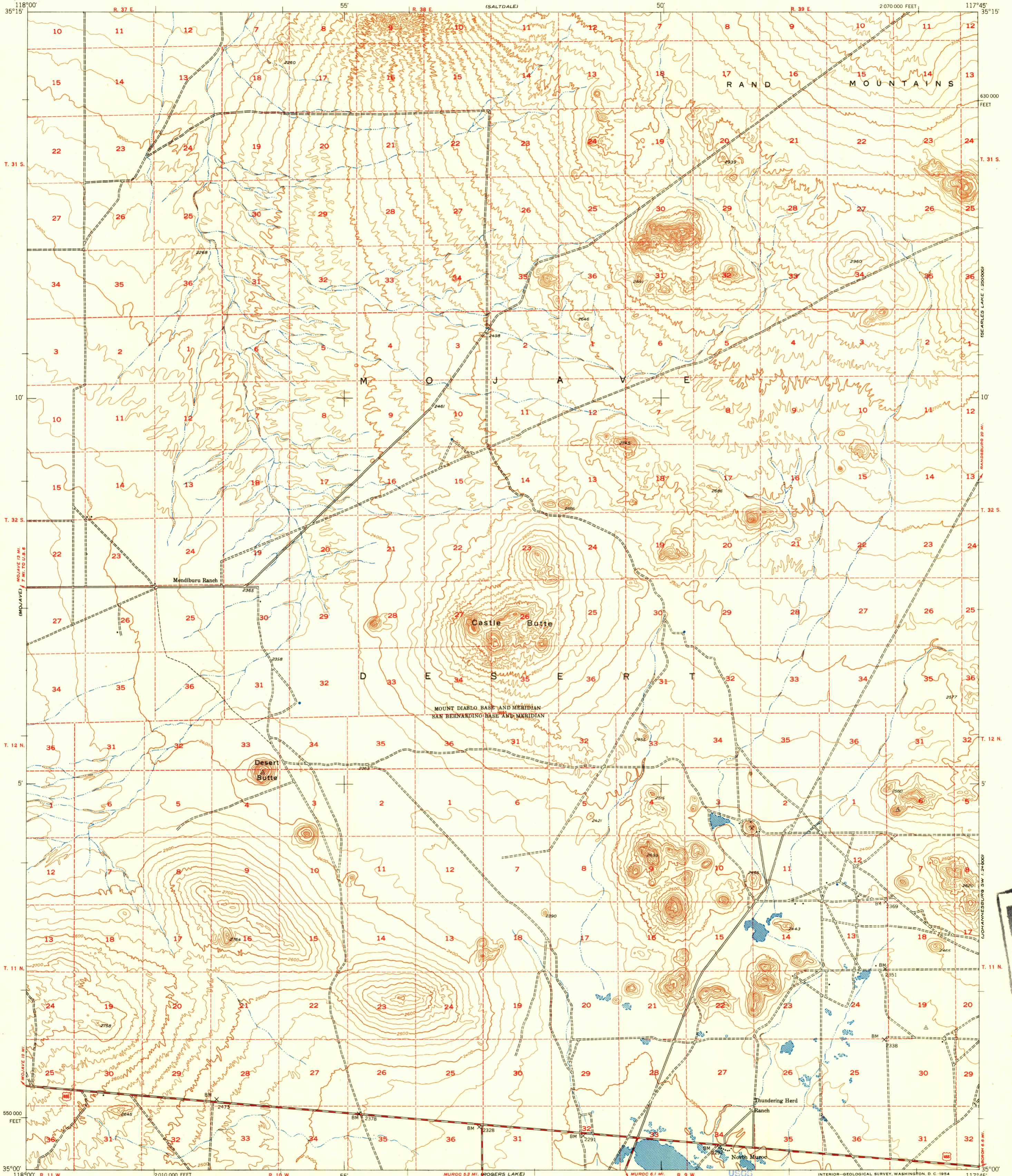
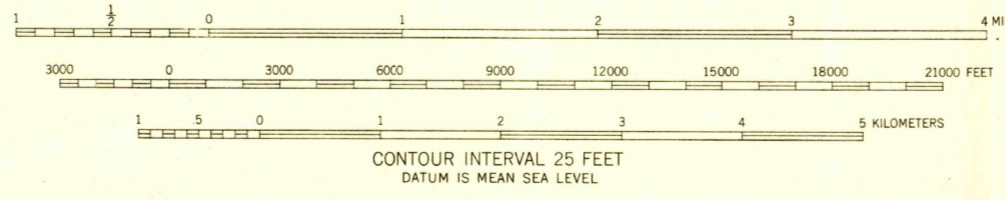
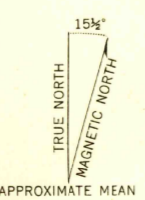


FILE COPY



Mapped by the Army Map Service
Published for civil use by the Geological Survey
Control by USGS and USC&GS
Topography from aerial photographs by multiplex methods
Aerial photographs taken 1943
Polyconic projection, 1927 North American datum
10,000-foot grid based on California coordinate system,
zone 5
Dashed land lines indicate approximate locations



Historical File
Topographic Division

ROAD CLASSIFICATION
Heavy-duty 4 LANE 6 LANE Light duty
Medium-duty 4 LANE 6 LANE Unimproved dirt
U. S. Route State Route

CASTLE BUTTE, CALIF. AUG 26 1964
N3500-W11745/15
1943

FILE COPY