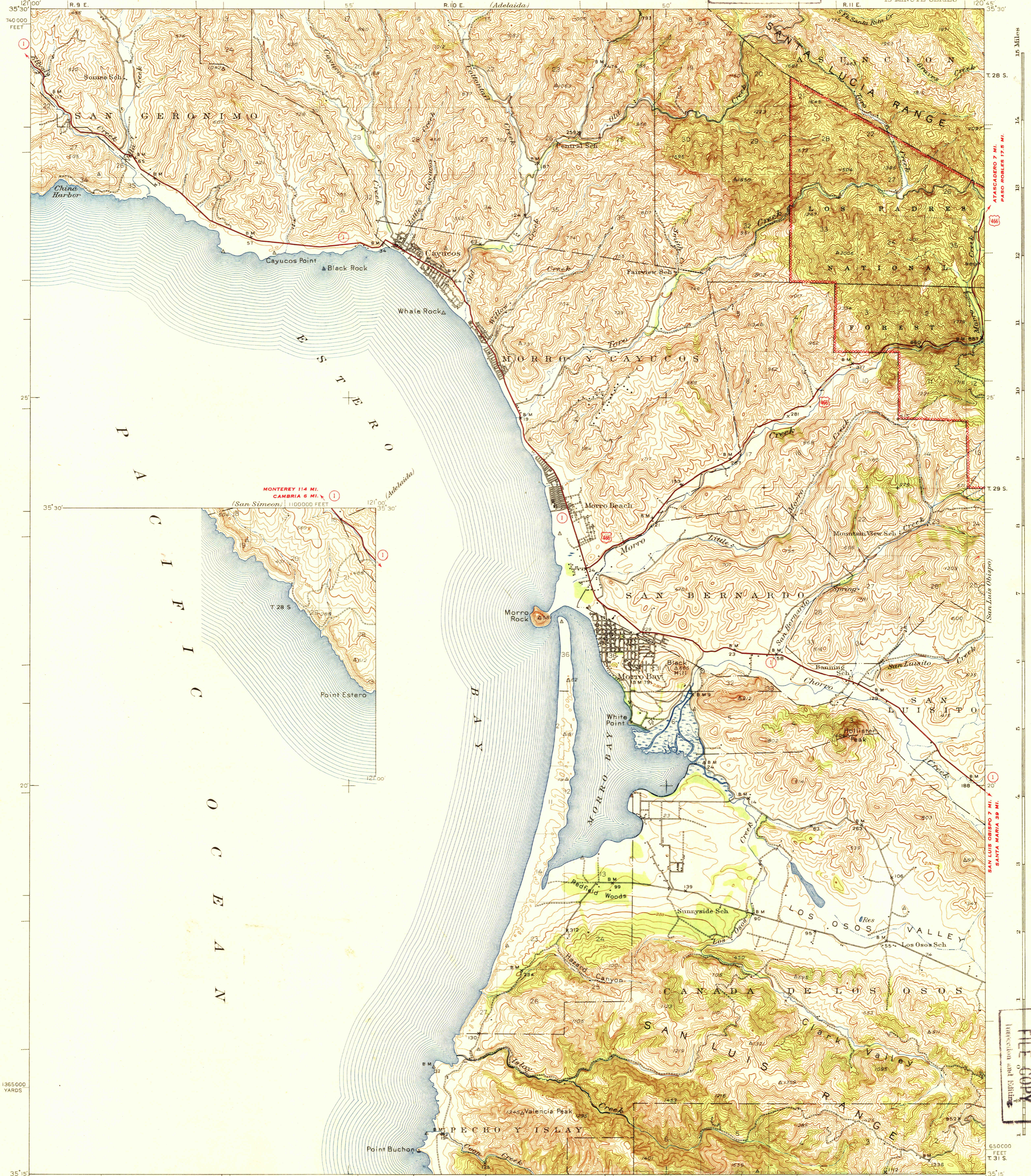


(Paso Robles)



740000 FEET  
1365000 YARDS  
35° 30'  
35° 30'  
35° 30'  
35° 15'

15 Miles  
14  
13  
12  
11  
10  
9  
8  
7  
6  
5  
4  
3  
2  
1  
650000 FEET  
T. 28 S.  
T. 29 S.  
T. 30 S.  
T. 31 S.

Topography by C.A. Ecklund, W.R. Chenoweth,  
T.F. Murphy, P.C. Erickson, J.E. Mundine,  
Hal Shelton, and U.S. Coast and Geodetic Survey  
Surveyed in 1939

TRUE NORTH  
MAGNETIC NORTH  
APPROXIMATE MEAN  
DECLINATION, 1939

Scale 62500  
1 2 3 4 Miles  
0 5000 10000 15000 20000 Feet  
1 2 3 4 5 Kilometers  
Contour interval 50 feet  
Datum is mean sea level

ROUTES USUALLY TRAVELED  
HARD IMPERVIOUS SURFACES  
OTHER SURFACE IMPROVEMENTS  
U. S. ROUTE 1943 STATE ROUTE

Polycyclic projection 1927 North American datum  
5000 yard grid based on U.S. zone system G  
10000 foot grid based on California (5)  
rectangular coordinate system

CAYUCOS, CALIF.  
Edition of 1943  
N3515-W12045/15

U. S. G. S.  
**FILE COPY**  
Inspection and Editing.

5385

JUN 22 1943