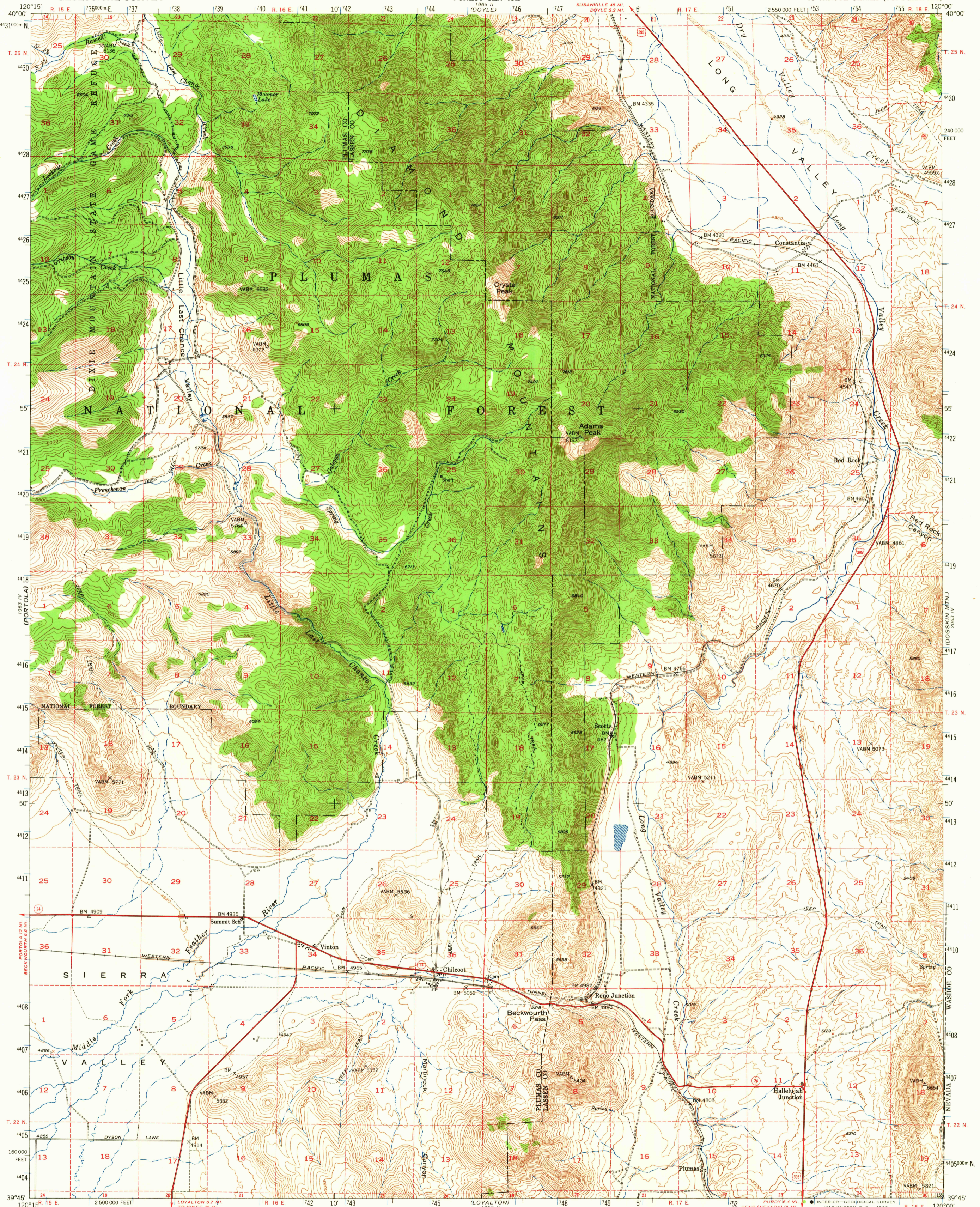


(MILFORD)

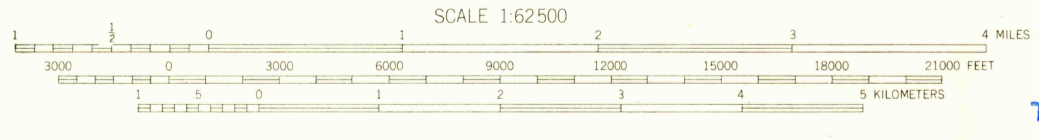
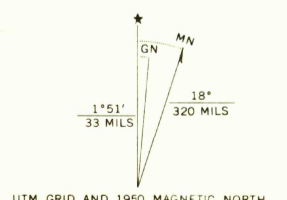
UNITED STATES DEPARTMENT OF THE INTERIOR GEOLOGICAL SURVEY

UNITED STATES DEPARTMENT OF AGRICULTURE FOREST SERVICE

CHILCOOT QUADRANGLE CALIFORNIA 15 MINUTE SERIES (TOPOGRAPHIC)



Mapped by the U. S. Forest Service Edited and published by the Geological Survey Control by USGS, USC&GS, USFS, and USBR Topography from aerial photographs by KEK plottor Aerial photographs taken 1947. Field check 1950 Polyconic projection. 1927 North American datum 10,000-foot grid based on California coordinate system, zone 1 Dashed land lines indicate approximate locations 1000-meter Universal Transverse Mercator grid ticks, zone 10, shown in blue



SCALE 1:62,500 CONTOUR INTERVAL 40 FEET DATUM IS MEAN SEA LEVEL THIS MAP COMPLIES WITH NATIONAL MAP ACCURACY STANDARDS FOR SALE BY U. S. GEOLOGICAL SURVEY, DENVER, COLORADO 80225 OR WASHINGTON, D. C. 20242 A FOLDER DESCRIBING TOPOGRAPHIC MAPS AND SYMBOLS IS AVAILABLE ON REQUEST

USGS Historical File Topographic Division

Table with 2 columns: Road Classification and Line Style. Includes categories like Heavy-duty, Medium-duty, Light-duty, and Unimproved dirt, along with symbols for U.S. Route and State Route.

U.S.G.S. FILE COPY TOPOGRAPHIC DIVISION

CHILCOOT, CALIF. N 3945-W 12000/15 1950 AMS 1963 I-SERIES V795

6125 JUL 22 1966