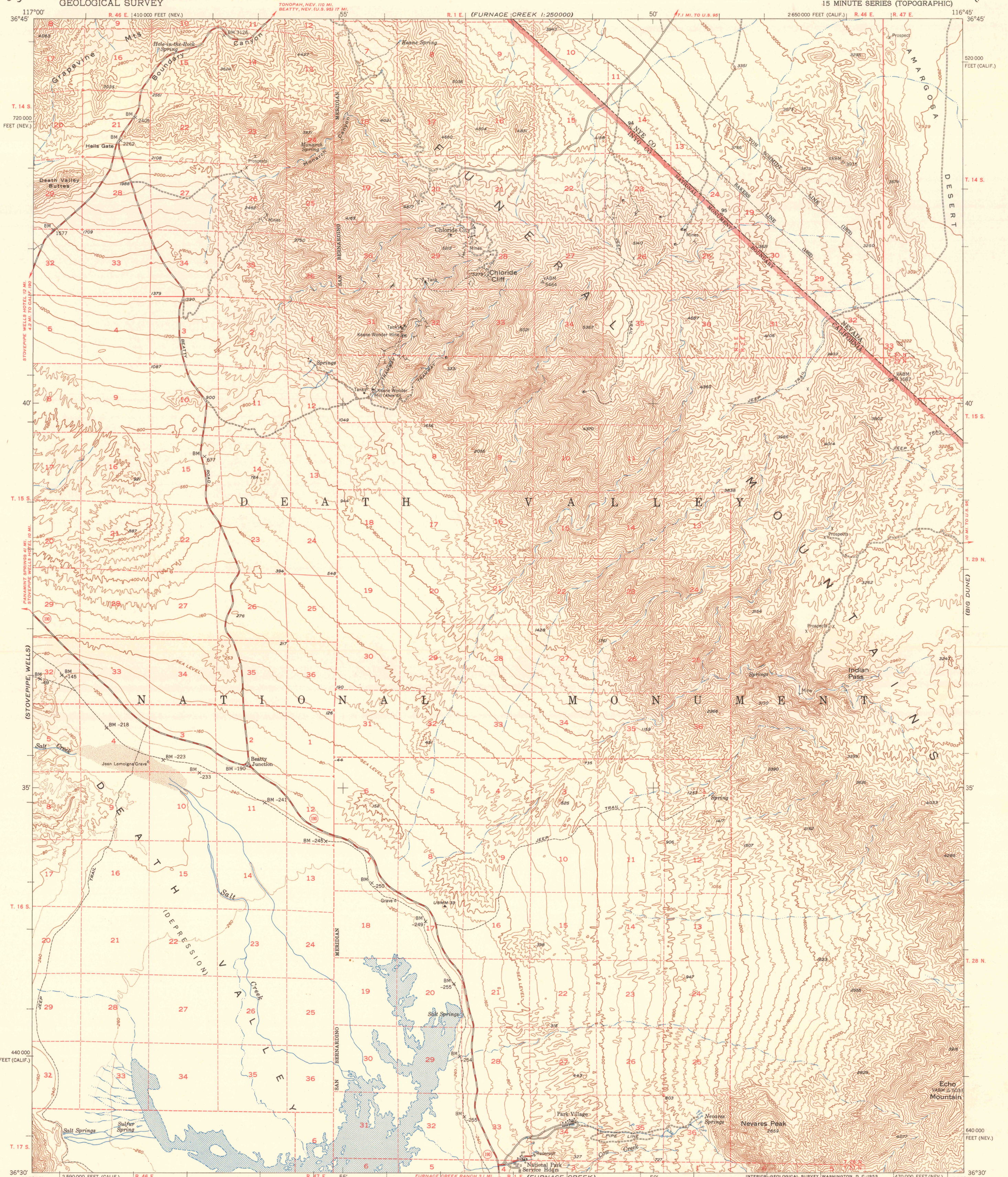
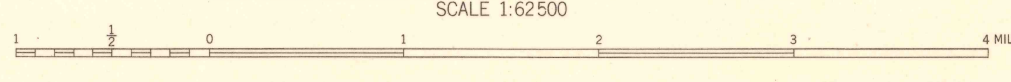
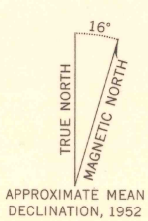


UNITED STATES
DEPARTMENT OF THE INTERIOR
GEOLOGICAL SURVEY

CHLORIDE CLIFF QUADRANGLE
CALIFORNIA-NEVADA
15 MINUTE SERIES (TOPOGRAPHIC)



Mapped, edited, and published by the Geological Survey
Control by USGS and USC&GS
Topography from aerial photographs by photogrammetric methods
Aerial photographs taken 1948. Field check 1952
Polyconic projection. 1927 North American datum
10,000-foot grids based on California coordinate system, zone 4
and Nevada coordinate system, central zone
Dashed land lines indicate approximate locations
Certain land lines omitted in T.28 N. and T.29 N. - R.2 E.
because of insufficient data. All recovered corners are shown
Unchecked elevations are shown in brown



CONTOUR INTERVAL 80 FEET
DOTTED LINES REPRESENT SUPPLEMENTAL CONTOURS
DATUM IS MEAN SEA LEVEL

THIS MAP COMPLIES WITH NATIONAL MAP ACCURACY STANDARDS
FOR SALE BY U. S. GEOLOGICAL SURVEY, FEDERAL CENTER, DENVER, COLORADO OR WASHINGTON 25, D. C.
A FOLDER DESCRIBING TOPOGRAPHIC MAPS AND SYMBOLS IS AVAILABLE ON REQUEST

USGS
Historical File
Topographic Division

ROAD CLASSIFICATION

Heavy-duty	4 LANE 16 LANE	Light-duty
Medium-duty	4 LANE 16 LANE	Unimproved dirt

U. S. Route (square symbol)
State Route (circle symbol)

QUADRANGLE LOCATION

CHLORIDE CLIFF, CALIF.-NEV.
N3630-W11645/15

FILE COPY
Imaging and Editing

1952

OCT 27 1953
OCT 27 1952

3180