

WARNER RESERVOIR

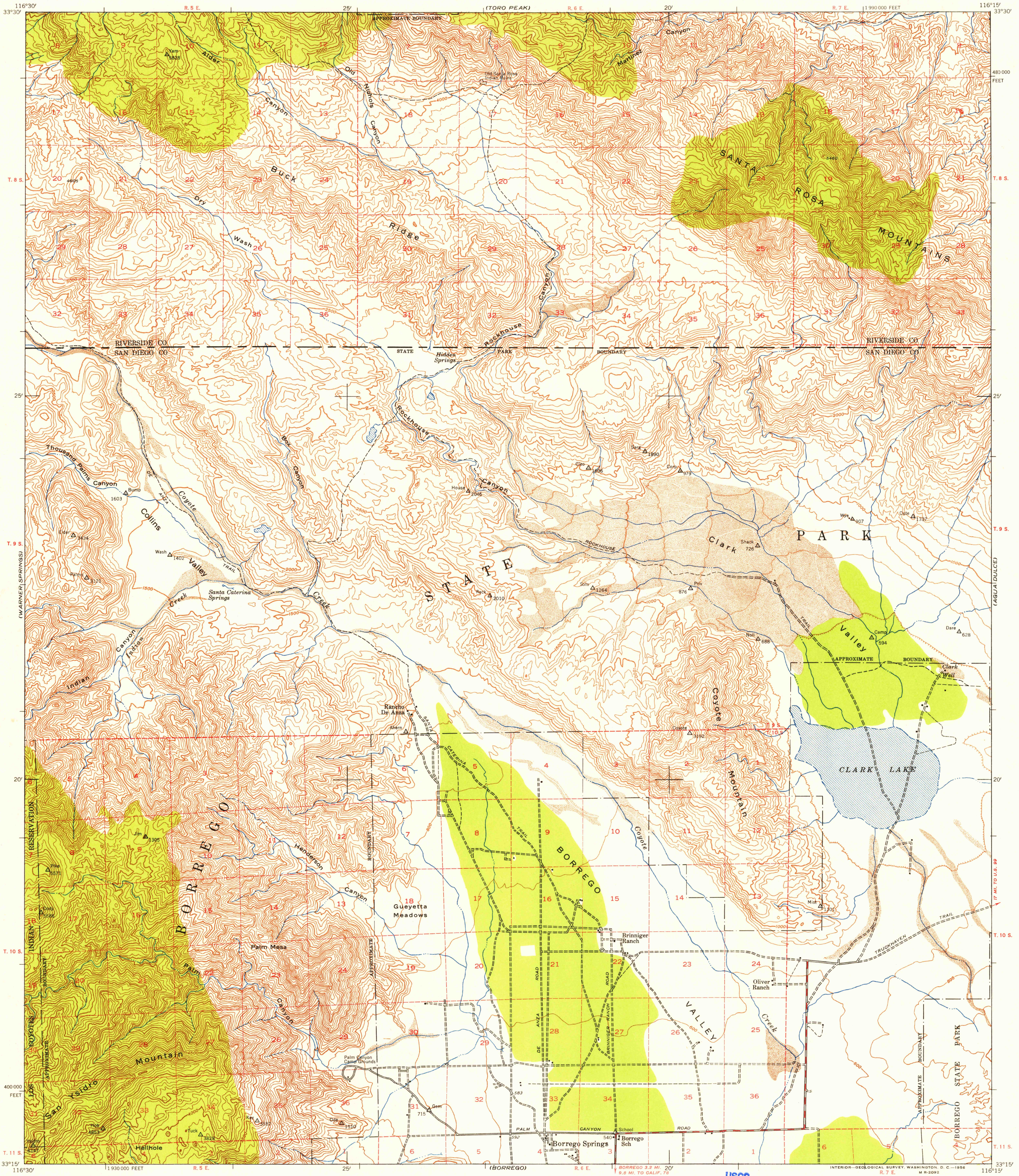
UNITED STATES
DEPARTMENT OF THE INTERIOR
GEOLOGICAL SURVEY

UNITED STATES
DEPARTMENT OF THE ARMY
CORPS OF ENGINEERS

U.S.G.S.
FILE COPY
TOPOGRAPHIC DIVISION

CLARK LAKE QUADRANGLE
CALIFORNIA
15 MINUTE SERIES (TOPOGRAPHIC)

COACHELLA

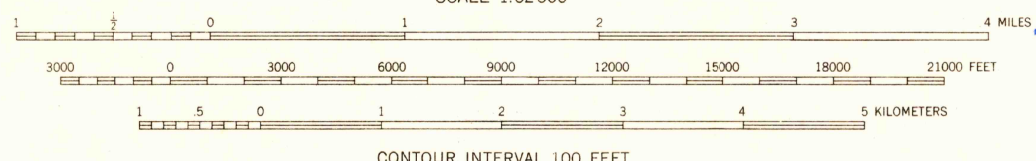
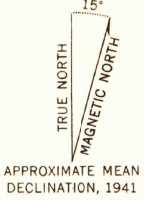


116°30'
33°30'
T. 8 S.
T. 9 S.
T. 10 S.
T. 11 S.
33°15'

116°15'
33°30'
480 000
FEET
T. 8 S.
T. 9 S.
T. 10 S.
T. 11 S.
33°15'

Mapped by the Army Map Service
Published for civil use by the Geological Survey
Control by USGS and USCE

Topography from aerial photographs by stereophotogrammetric methods. Aerial photographs taken 1941
Polyconic projection. 1927 North American datum
10,000-foot grid based on California coordinate system, zone 6
Dashed land lines indicate approximate locations
Land lines are omitted in T. 9 S.-R. 5 E., T. 9 S.-R. 6 E., T. 9 S.-R. 7 E., and T. 10 S.-R. 7 E. because of insufficient data
Unchecked elevations are shown in brown
No distinction is made between dwellings, barns, commercial and industrial buildings



CONTOUR INTERVAL 100 FEET
DATUM IS MEAN SEA LEVEL

USGS
Historical File
Topographic Division

ROAD CLASSIFICATION 1942
Heavy-duty ——— Light-duty ———
Medium-duty ——— Unimproved dirt ———
U. S. Route ——— State Route ———



U.S.G.S.
FILE COPY
TOPOGRAPHIC DIVISION

CLARK LAKE, CALIF.
N 3315—W 11615/15

1941

FOR SALE BY U. S. GEOLOGICAL SURVEY, FEDERAL CENTER, DENVER COLORADO OR WASHINGTON 25, D. C.
A FOLDER DESCRIBING TOPOGRAPHIC MAPS AND SYMBOLS IS AVAILABLE ON REQUEST

MAY 15 1952

2090