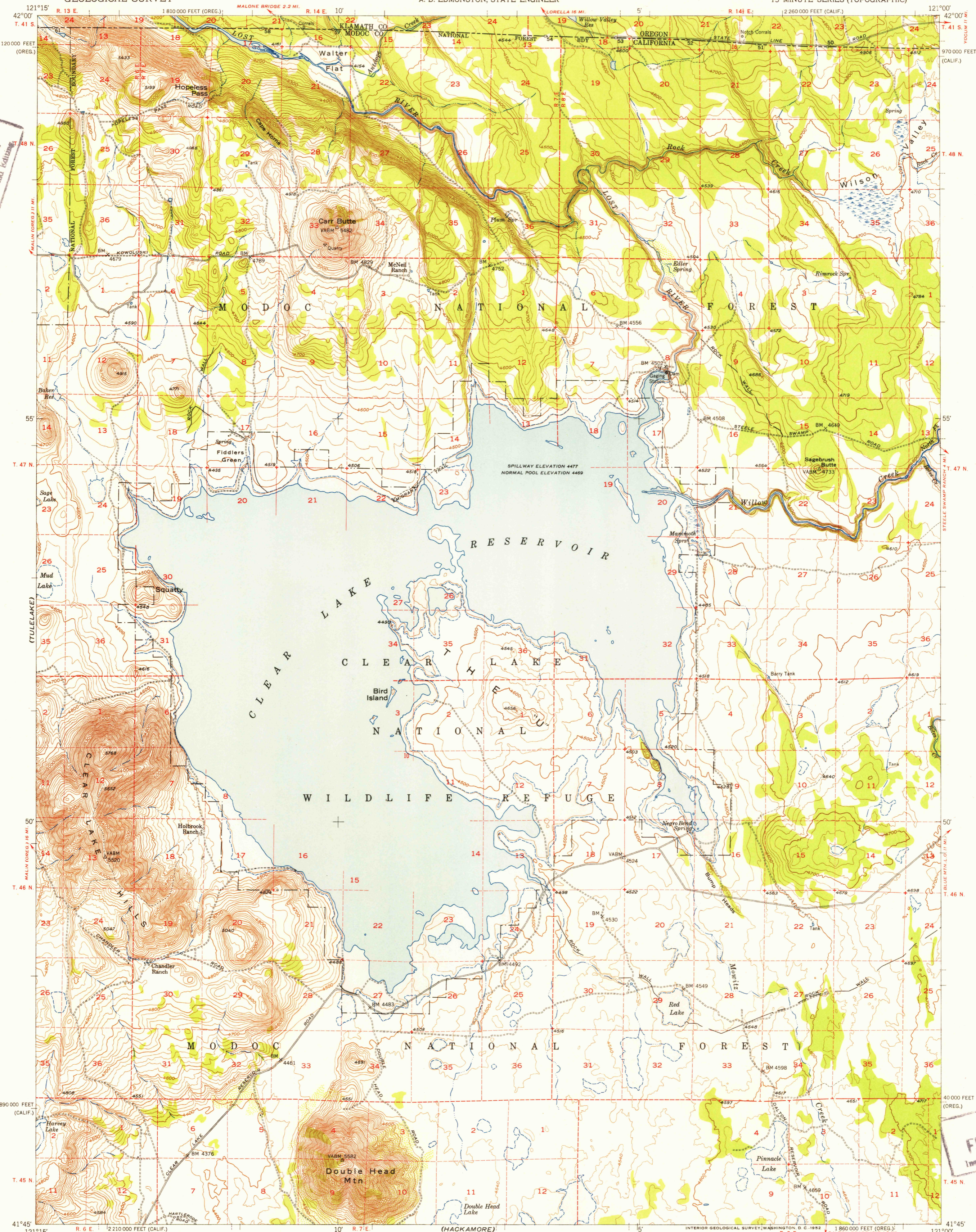
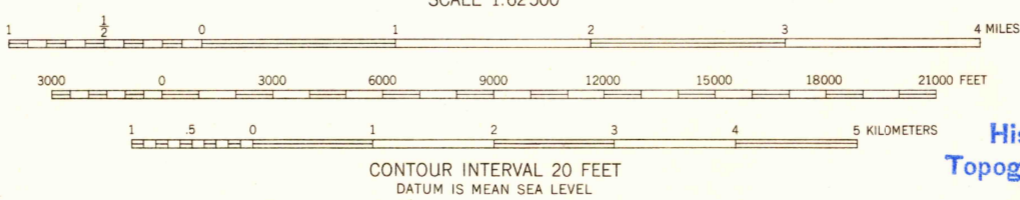
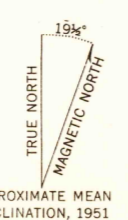


U.S.G.S.  
FILE COPY  
Inspection and Editing



U.S.G.S.  
FILE COPY  
Inspection and Editing

Mapped, edited, and published by the Geological Survey  
Control by USGS and USC&GS  
Topography from aerial photographs by multiple methods  
Aerial photographs taken 1948. Field check 1951  
Polyconic projection. 1927 North American datum  
10,000-foot grid based on California coordinate system, zone 1,  
and Oregon coordinate system, south zone  
Blue hatching bordering Clear Lake Reservoir indicates area  
subject to controlled inundation. Maximum elevation 4483 feet  
Dashed land lines indicate approximate locations



ROAD CLASSIFICATION  
Heavy-duty 4 LANE 16 LANE Light-duty  
Medium-duty 4 LANE 16 LANE Unimproved dirt  
U.S. Route State Route

USGS  
Historical File  
Topographic Division

CLEAR LAKE RESERVOIR, CALIF.-OREG.  
N4145-W12100/15

THIS MAP COMPLIES WITH NATIONAL MAP ACCURACY STANDARDS  
FOR SALE BY U. S. GEOLOGICAL SURVEY, FEDERAL CENTER, DENVER, COLORADO OR WASHINGTON 25, D. C.  
A FOLDER DESCRIBING TOPOGRAPHIC MAPS AND SYMBOLS IS AVAILABLE ON REQUEST

1951

DEC 4 1952

329