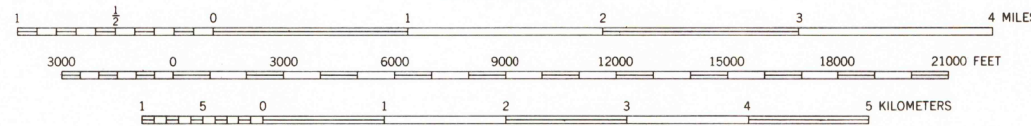
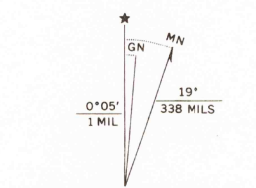


Mapped, edited, and published by the Geological Survey  
Control by USGS, USC&GS, and USFS  
Topography from aerial photographs by multiplex methods  
Aerial photographs taken 1951. Field check 1955  
Polyconic projection. 1927 North American datum  
10,000-foot grid based on California coordinate system, zone 1  
Dashed land lines indicate approximate locations  
Certain land lines are omitted in T. 37 N., and T. 38 N.-R. 10 W.  
because of insufficient data  
1000-meter Universal Transverse Mercator grid ticks,  
zone 10, shown in blue  
To place on the predicted North American Datum 1983  
move the projection lines 19 meters north and  
94 meters east  
There may be private inholdings within the boundaries of  
the National or State reservations shown on this map



CONTOUR INTERVAL 80 FEET  
NATIONAL GEODETIC VERTICAL DATUM OF 1929

THIS MAP COMPLIES WITH NATIONAL MAP ACCURACY STANDARDS  
FOR SALE BY U. S. GEOLOGICAL SURVEY, DENVER, COLORADO 80225, OR RESTON, VIRGINIA 22092  
A FOLDER DESCRIBING TOPOGRAPHIC MAPS AND SYMBOLS IS AVAILABLE ON REQUEST

ROAD CLASSIFICATION  
Light duty ————— Unimproved dirt - - - - -



COFFEE CREEK, CALIF.  
N4100—W12245/15

1955  
DMA 1466 III—SERIES V795

USGS  
Historical File  
Topographic Division

FEB 3 1981  
1040