

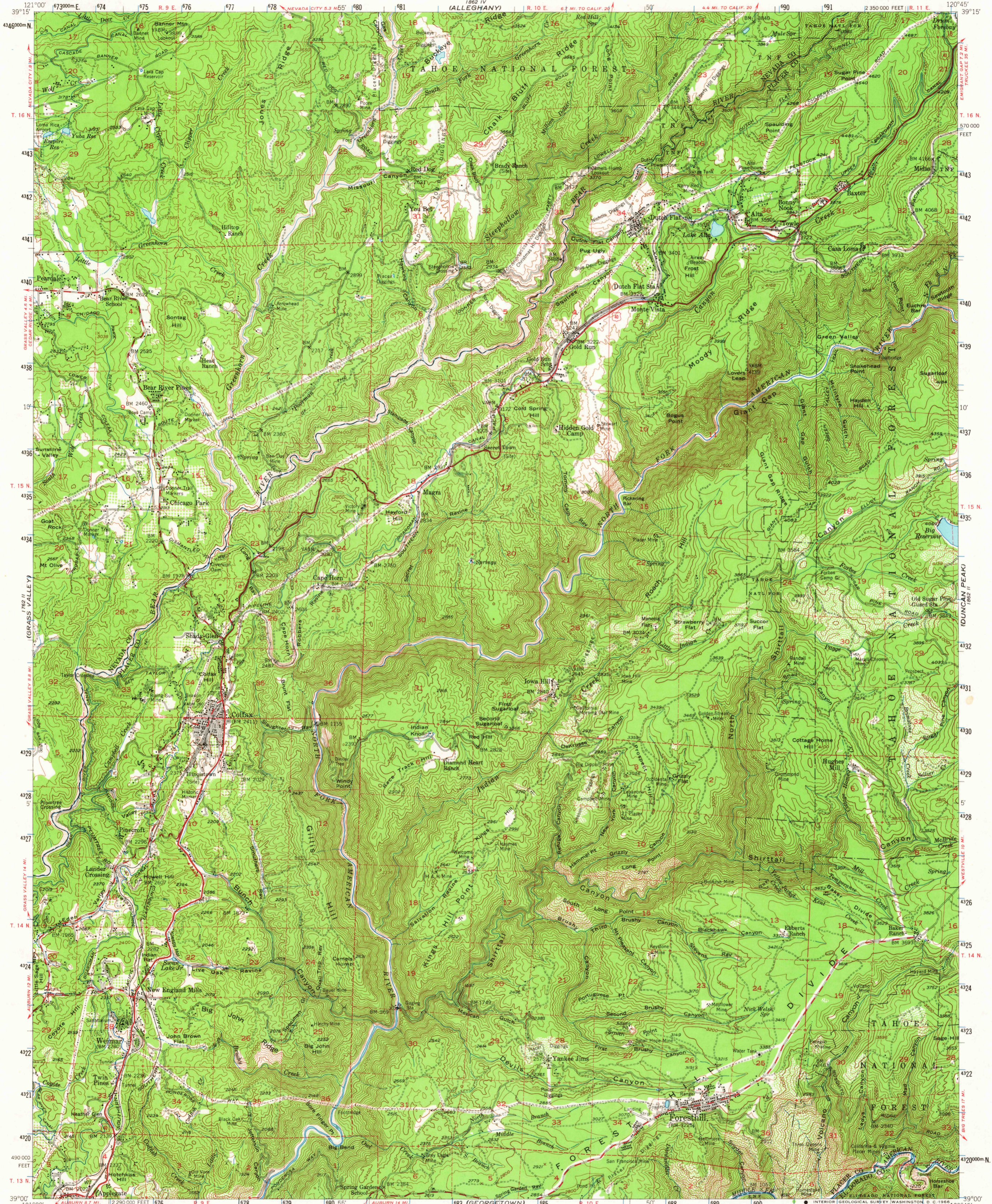
(NEVADA CITY)

UNITED STATES  
DEPARTMENT OF THE INTERIOR  
GEOLOGICAL SURVEY

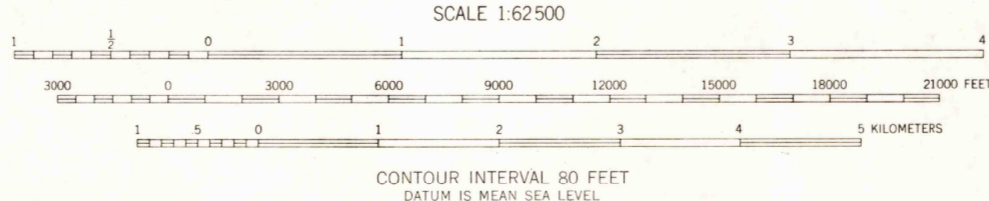
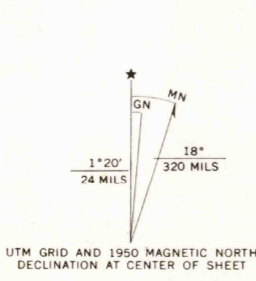
STATE OF CALIFORNIA  
REPRESENTED BY THE  
DIRECTOR OF PUBLIC WORKS

COLFAX QUADRANGLE  
CALIFORNIA  
15 MINUTE SERIES (TOPOGRAPHIC)

(EMIGRANT GAP)



Mapped, edited, and published by the Geological Survey  
Control by USGS and USC&GS  
Topography from aerial photographs by multiple methods  
Aerial photographs taken 1946. Field check, 1949-50  
Polyconic projection. 1927 North American datum  
10,000-foot grid based on California coordinate system, Zone 2  
Dashed land lines indicate approximate locations  
Unchecked elevations are shown in brown  
1000-meter Universal Transverse Mercator grid ticks,  
zone 10, shown in blue



USGS  
Historical File  
Topographic Division

ROAD CLASSIFICATION  
Heavy-duty — Light-duty  
Medium-duty — Unimproved dirt  
U.S. Route

U.S.G.S.  
FILE COPY  
TOPOGRAPHIC DIVISION

This area also covered by 1:24000 scale maps of  
Dutch Flat, Chicago Park, Colfax, and Foresthill  
7 1/2 minute quadrangles.  
COLFAX, CALIF.  
N3900-W12045/15  
1950  
AMS 1862 III-SERIES V795

8190  
MAY 2 1968

THIS MAP COMPLIES WITH NATIONAL MAP ACCURACY STANDARDS  
FOR SALE BY U. S. GEOLOGICAL SURVEY, DENVER, COLORADO 80225 OR WASHINGTON, D. C. 20242  
A FOLDER DESCRIBING TOPOGRAPHIC MAPS AND SYMBOLS IS AVAILABLE ON REQUEST