

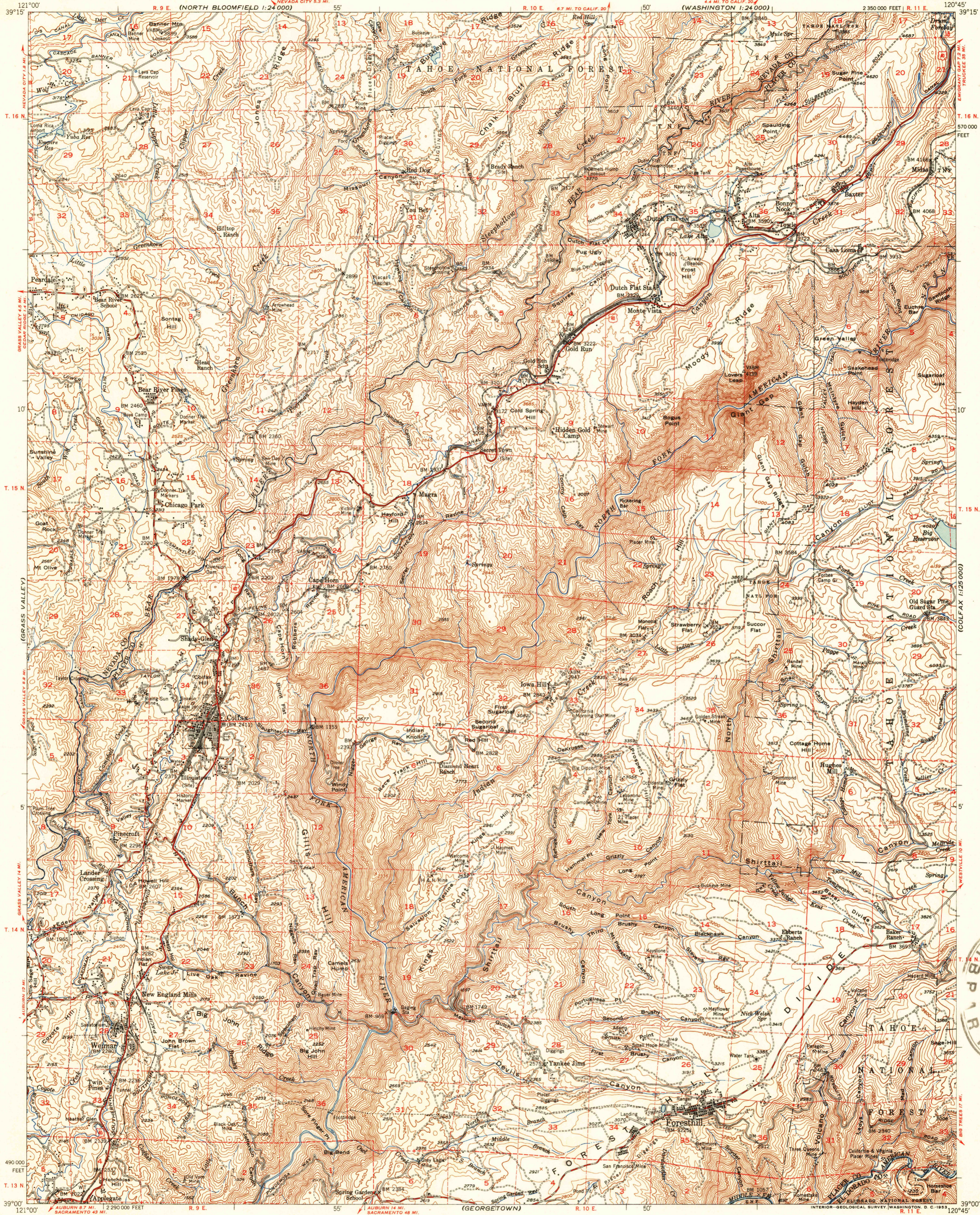
(NEVADA CITY)

UNITED STATES
DEPARTMENT OF THE INTERIOR
GEOLOGICAL SURVEY

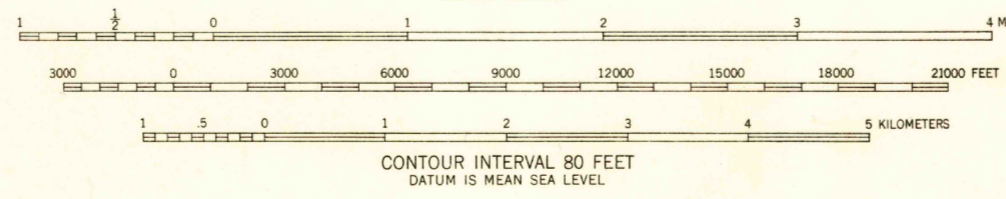
STATE OF CALIFORNIA
EARL WARREN, GOVERNOR
FRANK B. DURKEE, DIRECTOR OF PUBLIC WORKS
A. D. EDMONSTON, STATE ENGINEER

COLFAX QUADRANGLE
CALIFORNIA
15 MINUTE SERIES (TOPOGRAPHIC)

(COLFAX 1:25,000)



Mapped, edited, and published by the Geological Survey
Control by USGS and USC&GS
Topography from aerial photographs by multiplex methods
Aerial photographs taken 1946. Field check, 1949-50
Polyconic projection. 1927 North American datum
10,000-foot grid based on California coordinate system, Zone 2
Dashed land lines indicate approximate locations
Unchecked elevations are shown in brown



ROAD CLASSIFICATION

Heavy-duty **4 LANE 16 LANE** Light-duty **4 LANE 16 LANE**
 Medium-duty **4 LANE 16 LANE** Unimproved dirt **4 LANE 16 LANE**

U.S. Route State Route

This area also covered by 1:24,000 scale maps of Dutch Flat, Chicago Park, Colfax, and Forest Hill 7 1/2 minute quadrangles.

COLFAX, CALIF.
N3900-W12045/15



(FUNNEL HILL 1:24,000)