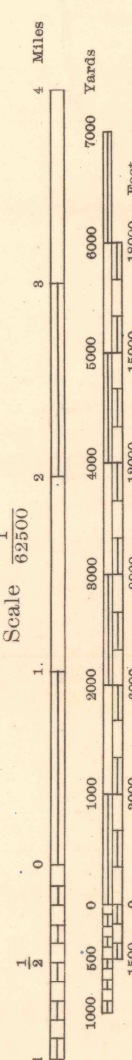
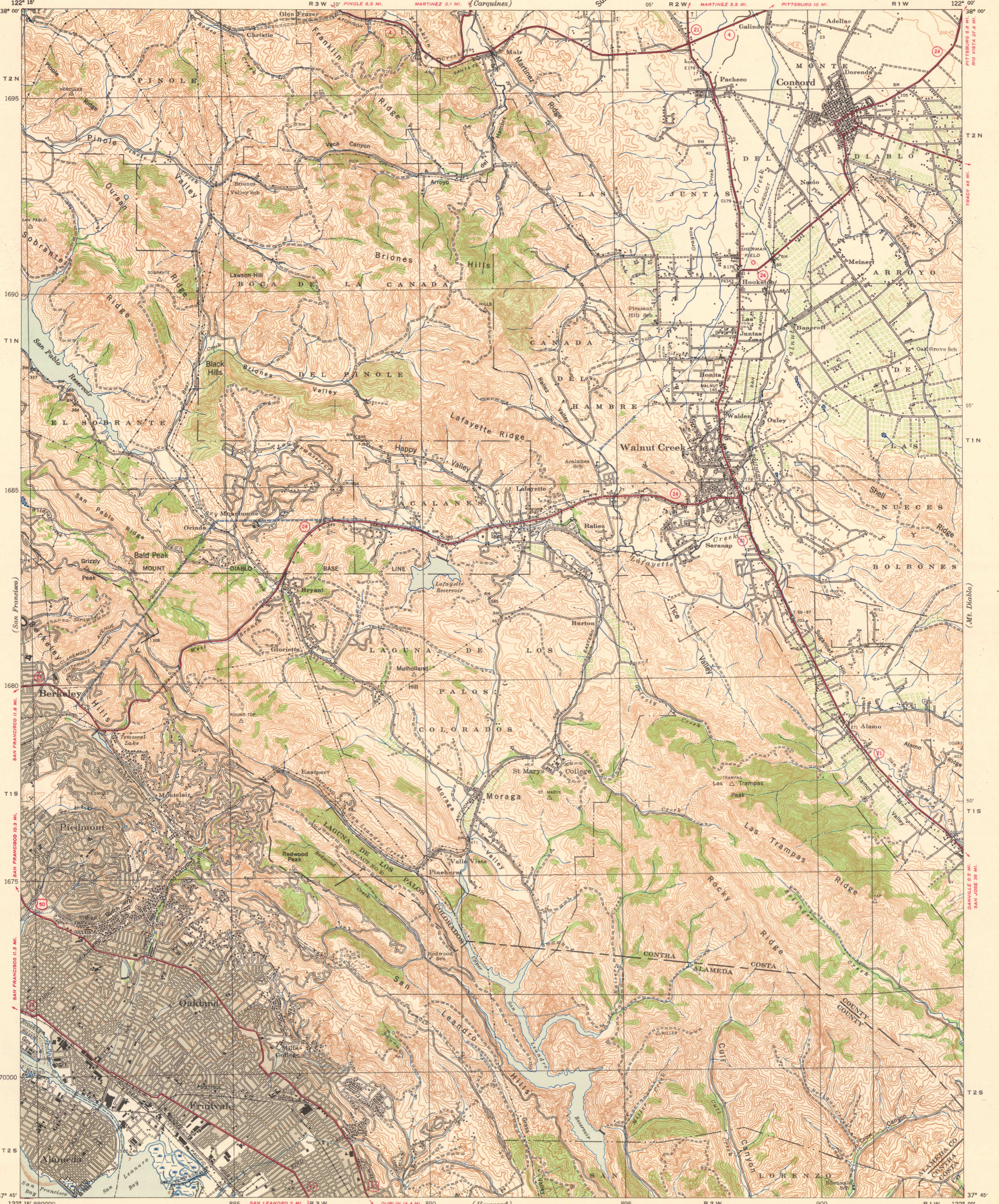
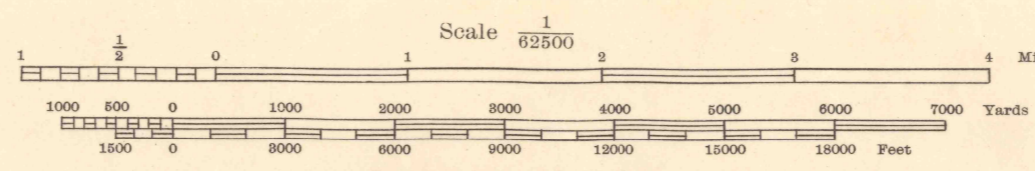


Advance Edition
Subject To Correction



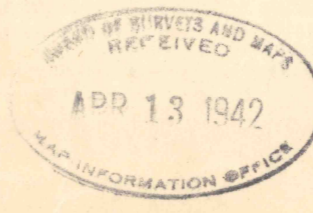
Prepared under the direction of the Chief of Engineers, U. S. Army, 1941. Horizontal control by 29th Engineers, U. S. Army, 1940, U. S. Coast and Geodetic Survey, 1932, and U. S. Geological Survey, 1929. Vertical control by 29th Engineers, U. S. Army, 1940, U. S. Coast and Geodetic Survey, 1934-39, and U. S. Geological Survey, 1929. Topography by 29th Engineers, U. S. Army, 1941, utilizing multiplex aeroprojectors, from K-38 (single lens) aerial photographs. Photography by 82nd Observation Squadron, Air Corps, U. S. Army, 1939. Polyconic Projection, North American 1927 Datum.



Contour interval 50 feet
Datum is mean sea level (1929 Adj.)

FIFTYTHOUSAND YARD GRID COMPUTED FROM "GRID SYSTEM FOR PROGRESSIVE MAPS IN THE U. S." ZONE G, U. S. C. & G. S. SPECIAL PUBLICATION NO. 59 THE LAST THREE DIGITS OF THE GRID NUMBERS ARE OMITTED

NOTE: OFFICERS USING THIS MAP WILL MARK HEREON CORRECTIONS AND ADDITIONS WHICH COME TO THEIR ATTENTION AND MAIL DIRECT TO THE CHIEF OF ENGINEERS, WASHINGTON, D. C.



APPROXIMATE MEAN DECLINATION 1942 ANNUAL MAGNETIC CHANGE 1' DECREASE

101463
ROUTES USUALLY TRAVELED
HARD IMPERVIOUS SURFACES
OTHER SURFACE IMPROVEMENTS
1942
50 U. S. ROUTE 21 STATE ROUTE

CONCORD, CALIF.
N3745-W12200/15

29TH ENGINEER BATTALION REPRODUCTION PLANT, PORTLAND, OREG., 1942