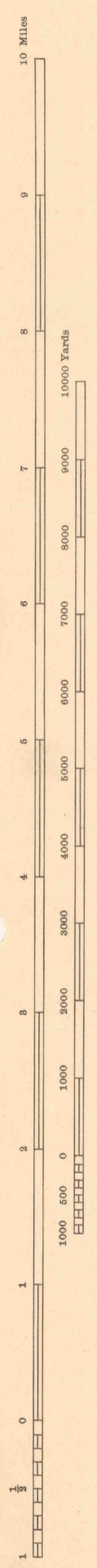
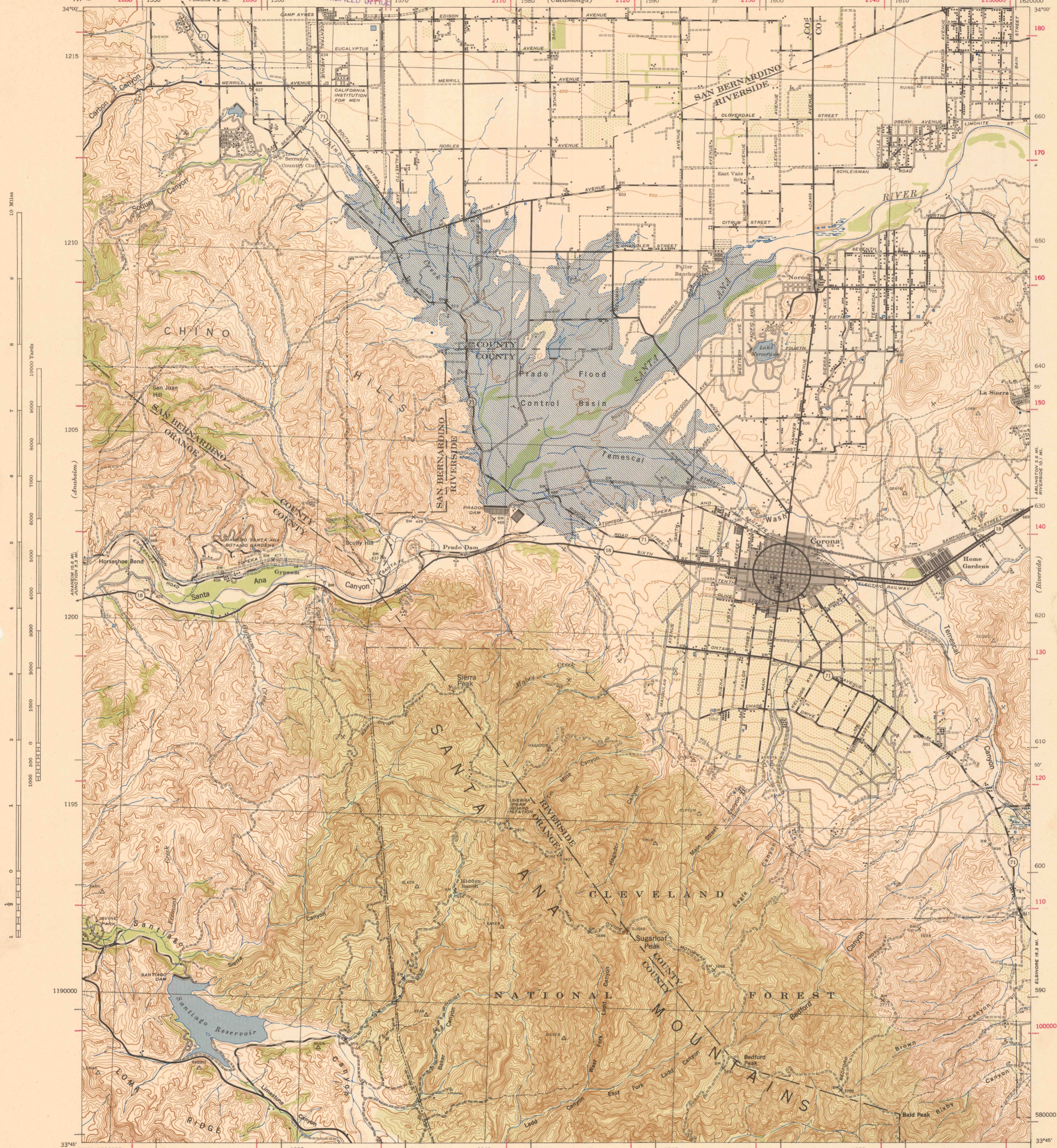


HONOLULU OIL CORPORATION  
GEOLOGICAL DEPARTMENT  
BAKERSFIELD OFFICE

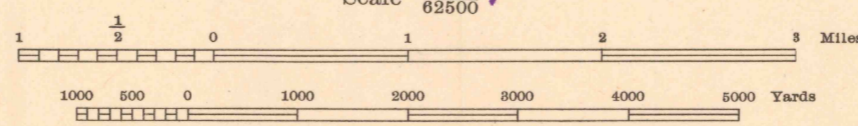
(Cucamonga)

(San Bernardino)



Prepared under the direction of the Chief of Engineers, U. S. Army, 1942.  
Horizontal control by U. S. Coast & Geodetic Survey, 1886 to 1933 and 1938 and 29th Engineers, U. S. Army, 1939.  
Vertical control by U. S. Coast & Geodetic Survey, 1924 to 1939, U. S. Geological Survey, 1933 - 1935 and 1940 and 29th Engineers, U. S. Army, 1939 and 1940.  
Topography by U. S. Geological Survey, 1933 and 29th Engineers, U. S. Army, 1942, from Tandem T-3A (5 lens) aerial photographs, by stereo-comparagraph methods. Intermediate elevations by multiplex aero-projectors.  
Photography by 91st Observation Squadron, Air Corps, U. S. Army, 1939.  
Polyconic Projection, North American 1927 Datum.

Scale 1/82500

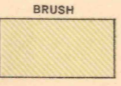


Contour interval 50 feet  
Datum is mean sea level (1929 Adj.)

FIVE THOUSAND YARD GRID COMPUTED FROM "GRID SYSTEM FOR PROGRESSIVE MAPS IN THE U. S." ZONE G, U. S. C. & G. S. SPECIAL PUBLICATION NO. 59 (THE LAST THREE DIGITS OF THE GRID NUMBERS ARE OMITTED)

NOTE: OFFICERS USING THIS MAP WILL MARK MERSON CORRECTIONS AND ADDITIONS WHICH COME TO THEIR ATTENTION AND MAIL DIRECT TO "THE CHIEF OF ENGINEERS, WASHINGTON, D. C."

**ROAD CLASSIFICATIONS**  
Dependable hard surface, heavy duty road. — U. S. Route 101  
Loose surface graded, dry weather road. — U. S. Route 101  
Secondary, hard surface, all weather road. — State Route 18  
Dirt road. — State Route 18  
More than two lanes indicated by note with tick at point of change. — State Route 18  
Road Data 1942



GRAY OVERTINT SHOWS URBAN AREA WHERE ONLY LANDMARK BUILDINGS ARE PLOTTED



TEN THOUSAND FOOT PLANE COORDINATES COMPUTED FROM U. S. C. AND G. S. PROJECTION TABLES FOR CALIFORNIA VI ARE INDICATED BY SHORT DOTTED LINES ON ALL MARGINS AND BY COORDINATE NUMBERS ON THE TOP AND RIGHT MARGINS (THE LAST THREE DIGITS OF THE GRID NUMBERS ARE OMITTED)

OVERLAPPING GRID FOR CALIFORNIA V INDICATED BY RED DOTTED LINES ON ALL MARGINS AND BY COORDINATE NUMBERS IN RED ON THE TOP AND RIGHT MARGINS.

914-B  
CORONA, CALIF.  
N3345-W11730/15

(Santa Ana)

(Lake Elsbere)