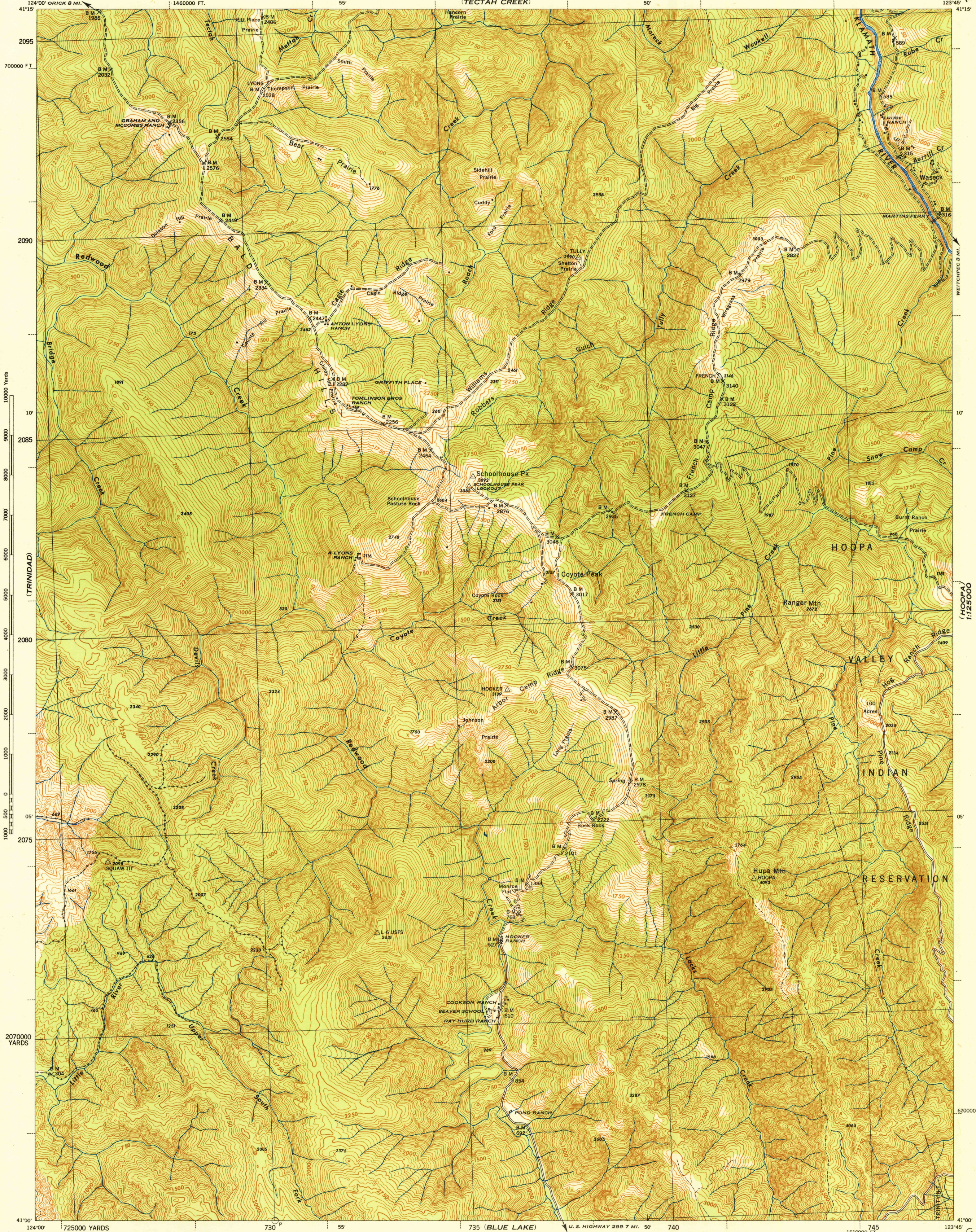
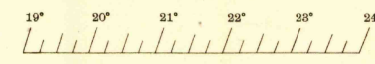


CALIFORNIA  
COYOTE PEAK QUADRANGLE  
GRID ZONE "G"

WAR DEPARTMENT  
CORPS OF ENGINEERS, U. S. ARMY

FIRST EDITION - 29E 1

CALIFORNIA  
COYOTE PEAK QUADRANGLE  
15 MINUTE SERIES  
GRID ZONE "G"



124°00' 725000 YARDS  
FIRST EDITION (29E 1) 1943  
Prepared by U. S. Department of Agriculture, Forest Service,  
under the direction of the Chief of Engineers, U. S. Army, 1943.  
Control by U. S. Coast and Geodetic Survey, U. S. Geological Survey,  
and Forest Service.  
Topography by Forest Service stereophotogrammetric methods (KEK plotter).  
Photography by Forest Service, 1942.  
Polyconic projection, 1927 North American datum.

**ROAD CLASSIFICATION**

Dependable hard surface, all-weather road. U. S. Route 160  
Secondary hard surface, all-weather road. State Route 30  
Loose surface graded, dry weather road.   
Dirt road.   
More than two lanes indicated by note along road with tick at point of change. **2 LANE 1/2 LANE**  
THIS MAP COMPLIES WITH THE NATIONAL STANDARD MAP ACCURACY REQUIREMENTS.

Scale  $\frac{1}{62500}$   
1000 500 0 1000 2000 3000 4000 5000 Yards  
3 Miles

CONTOUR INTERVAL 50 FEET  
DATUM IS MEAN SEA LEVEL (1929 ADJ.)

FIVE THOUSAND YARD GRID COMPUTED FROM "GRID SYSTEM FOR PROGRESSIVE MAPS IN THE U. S. ZONE G, U. S. C. & G. S. SPECIAL PUBLICATION NO. 59"  
TEN THOUSAND FOOT GRID BASED ON CALIFORNIA PLANE COORDINATE SYSTEM, ZONE 1  
THE LAST THREE DIGITS OF THE GRID NUMBERS ARE OMITTED  
NOTE: OFFERS USING THIS MAP WILL MAKE NECESSARY CORRECTIONS AND ADJUSTMENTS WHICH COME TO THEIR ATTENTION AND MAKE DIRECT TO THE CHIEF OF ENGINEERS, WASHINGTON, D. C.

APPROXIMATE MEAN DECLINATION 1945 FOR CENTER OF SHEET  
ANNUAL MAGNETIC CHANGE 2' DECREASE  
USE DIAGRAM ONLY TO OBTAIN NUMERICAL VALUES TO DETERMINE MAGNETIC NORTH LINE; CONNECT THE PIVOT POINT "P" ON THE SOUTH EDGE OF THE MAP WITH THE VALUE OF THE ANGLE BETWEEN GRID AND MAGNETIC NORTH, AS PLOTTED ON THE DEGREE SCALE AT THE NORTH EDGE OF THE MAP.

USGS  
Historical File  
Topographic Division

NATIONAL FOREST BOUNDARIES ARE APPROXIMATE.

29TH ENGINEER REPRODUCTION PLANT, PORTLAND, OREGON  
ANS NO. 120326  
1945

COYOTE PEAK, CALIF.  
N4100-W12345, 15

U. S. G. S.  
FILE COPY  
125000