

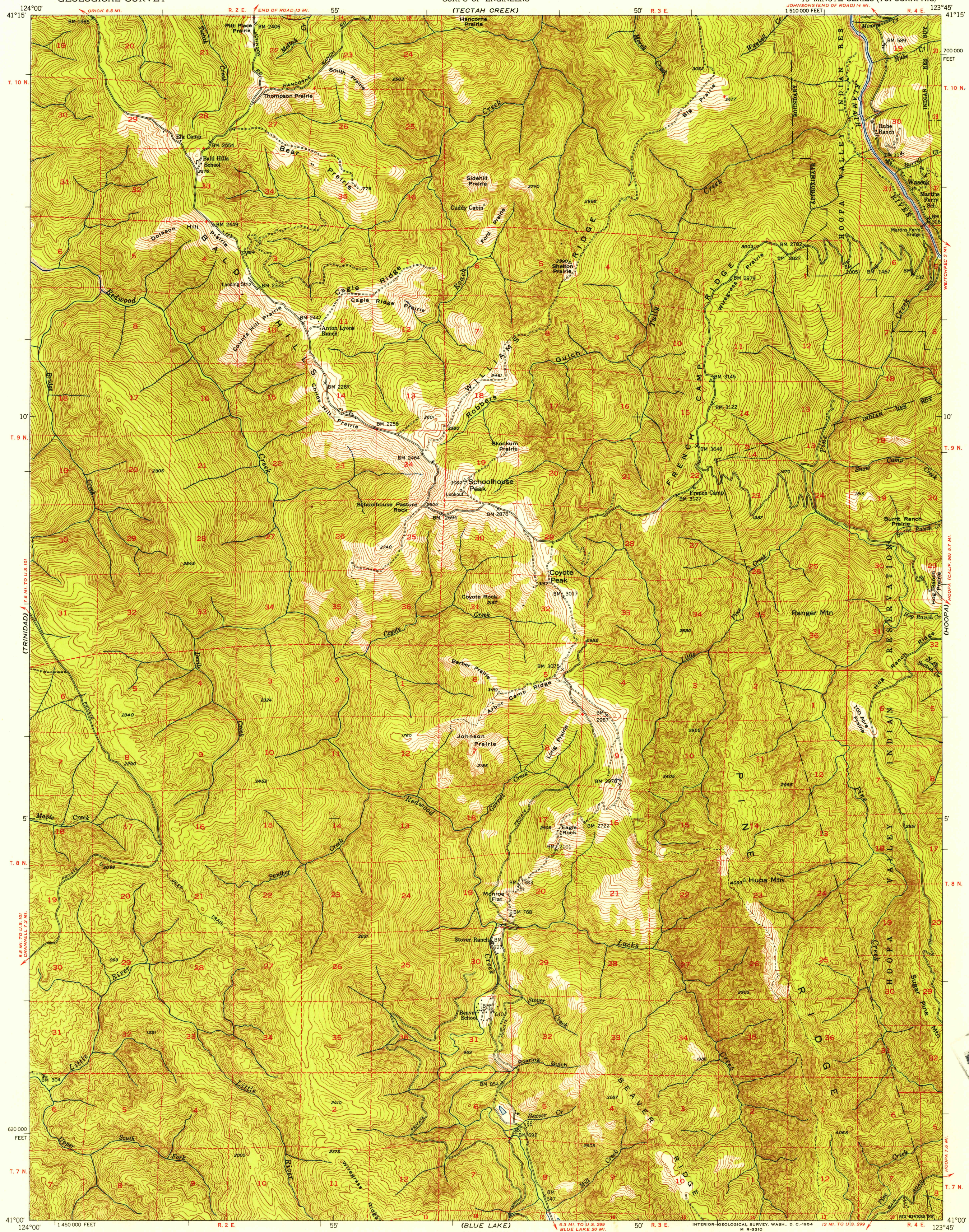
(ORICK)

UNITED STATES DEPARTMENT OF THE INTERIOR GEOLOGICAL SURVEY

UNITED STATES DEPARTMENT OF THE ARMY CORPS OF ENGINEERS (TECTAH CREEK)

COYOTE PEAK QUADRANGLE CALIFORNIA-HUMBOLDT CO. 15 MINUTE SERIES (TOPOGRAPHIC)

(ORLEANS)

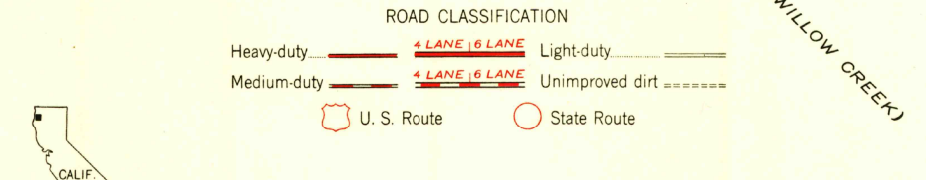
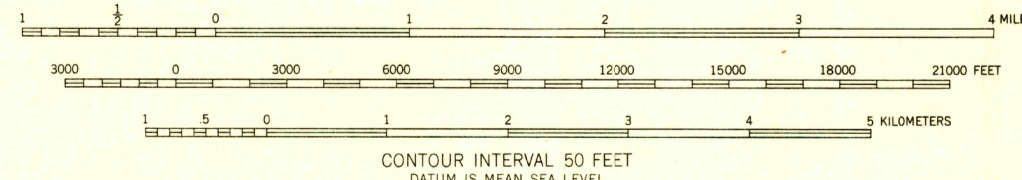
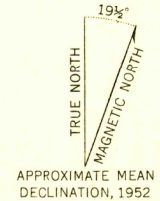


FILE COPY

FILE COPY

(EUREKA)

Mapped by the Army Map Service Edited and published by the Geological Survey Control by USGS and USC&GS Topography from aerial photographs by KEK plotter methods 1943 Aerial photographs taken 1942. Culture revision by USGS 1952 Polyconic projection. 1927 North American datum 10,000-foot grid based on California coordinate system, zone 1 Dashed land lines indicate approximate locations Certain land lines are omitted because of insufficient data All recovered corners are shown



THIS MAP COMPLIES WITH NATIONAL MAP ACCURACY STANDARDS FOR SALE BY U.S. GEOLOGICAL SURVEY, FEDERAL CENTER, DENVER, COLORADO OR WASHINGTON 25, D. C. A FOLDER DESCRIBING TOPOGRAPHIC MAPS AND SYMBOLS IS AVAILABLE ON REQUEST

USGS Historical File Topographic Division

COYOTE PEAK, CALIF. N4100-W12345/15 1952

(WILLOW CREEK)

MAY 7 1954

3212