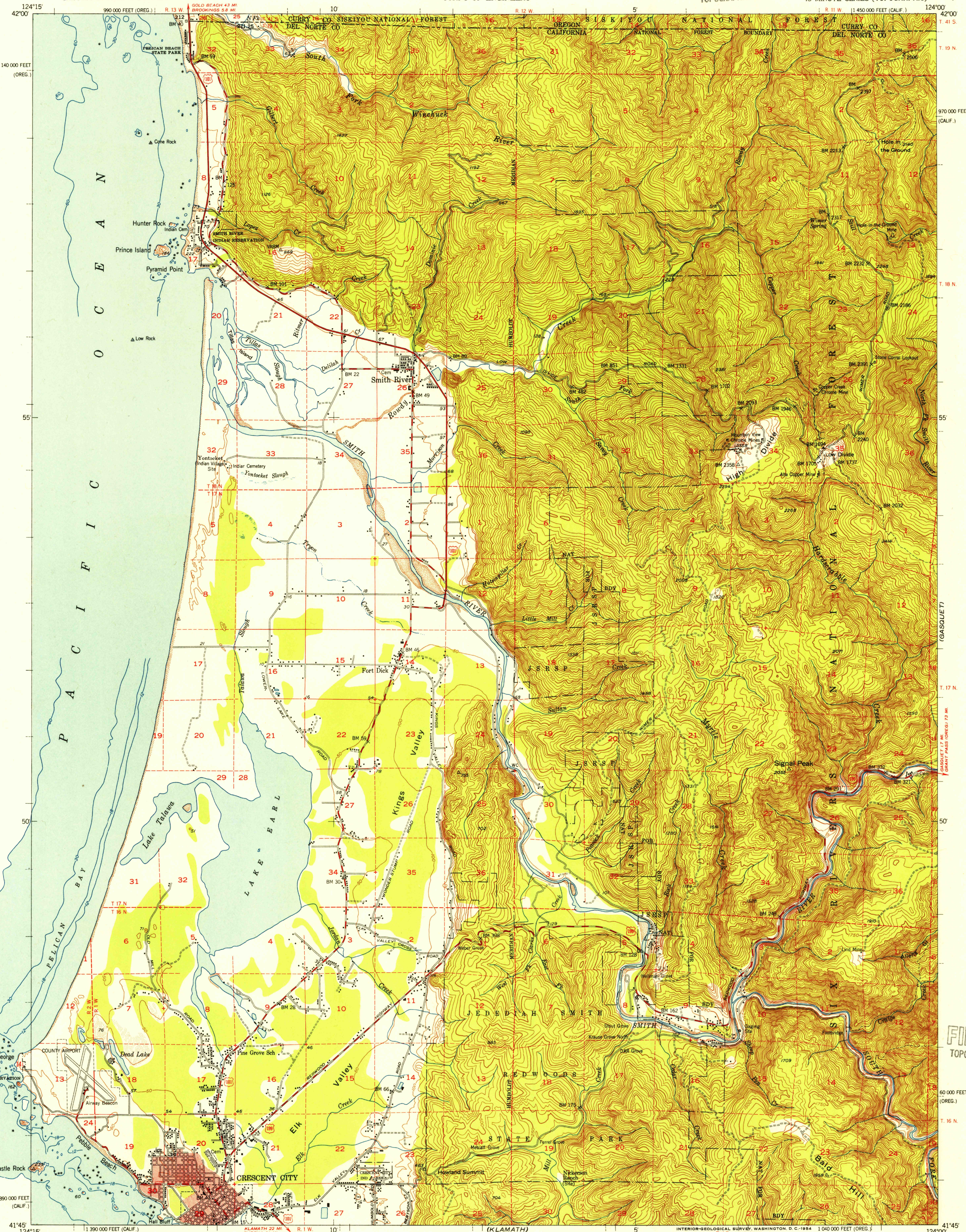
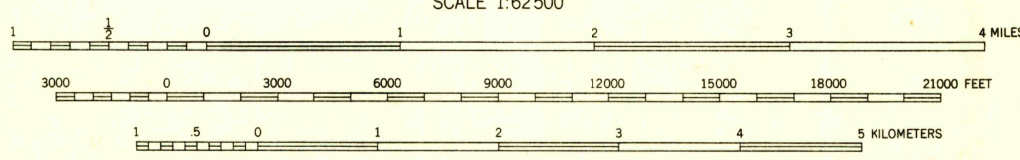
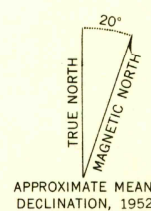


W 125 000



Mapped by the Army Map Service
Edited and published by the Geological Survey
Control by USGS and USC&GS
Topography from aerial photographs by KEK plotter methods 1943
Aerial photographs taken 1942. Culture revision by USGS 1952
Hydrography compiled from USC&GS charts 5895 and 5896
Polyconic projection. 1927 North American datum
10,000-foot grids based on California coordinate system, zone 1
and Oregon coordinate system, south zone
Red tint indicates areas in which only landmark buildings are shown
Dashed land lines indicate approximate locations



CONTOUR INTERVAL 50 FEET
DATUM IS MEAN SEA LEVEL
DEPTH CURVES IN FEET - DATUM IS MEAN LOWER LOW WATER
SHORELINE SHOWN REPRESENTS THE APPROXIMATE LINE OF MEAN HIGH WATER
THE AVERAGE RANGE OF TIDE IS APPROXIMATELY 4 FEET

THIS MAP COMPLIES WITH NATIONAL MAP ACCURACY STANDARDS
FOR SALE BY U. S. GEOLOGICAL SURVEY, FEDERAL CENTER, DENVER, COLORADO OR WASHINGTON 25, D. C.
A FOLDER DESCRIBING TOPOGRAPHIC MAPS AND SYMBOLS IS AVAILABLE ON REQUEST



ROAD CLASSIFICATION
Heavy-duty 4 LANE 16 LANE Light-duty
Medium-duty 4 LANE 16 LANE Unimproved dirt
U. S. Route State Route

USGS
Historical File
Topographic Division
CRESCENT CITY, CALIF.-OREG.
N4145-W12400/15
1952

(SHIP MTN)