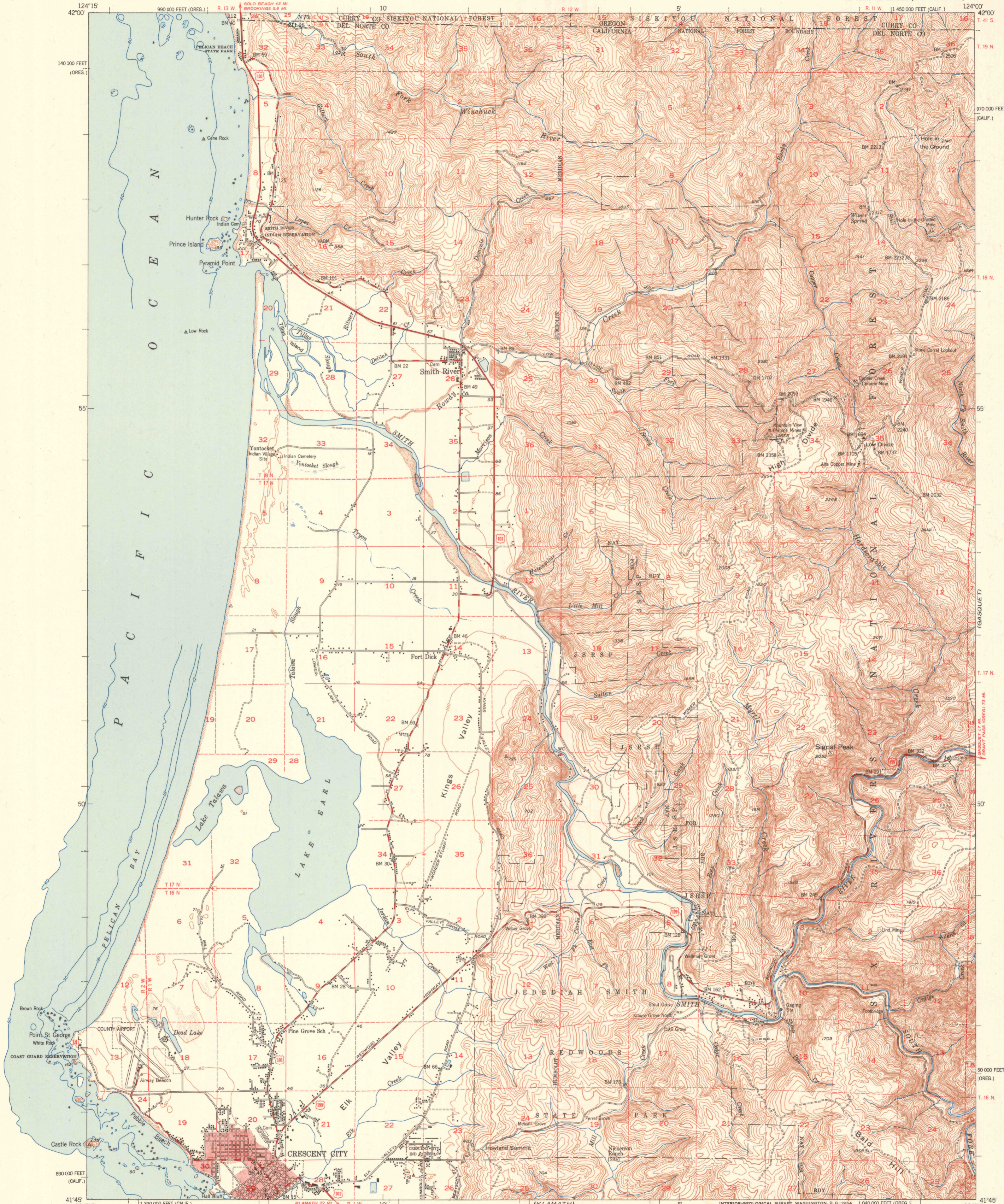
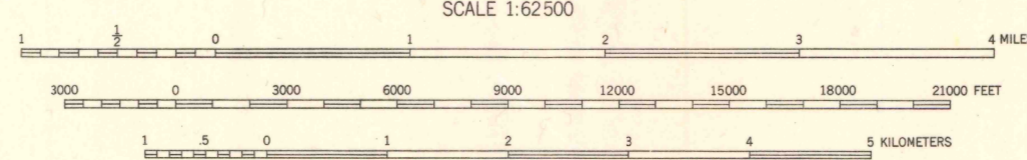
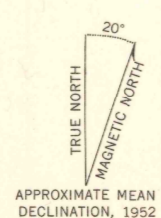


1:25,000  
KERBY



GEOLOGICAL SURVEY  
U. S. WASHINGTON  
OCT 27 1954  
LIBRARY

Mapped by the Army Map Service  
Edited and published by the Geological Survey  
Control by USGS and USC&GS  
Topography from aerial photographs by KEK plotter methods 1943  
Aerial photographs taken 1942. Culture revision by USGS 1952  
Hydrography compiled from USC&GS charts 5895 and 5896  
Polyconic projection. 1927 North American datum  
10,000-foot grids based on California coordinate system, zone 1  
and Oregon coordinate system, south zone  
Red tint indicates areas in which only landmark buildings are shown  
Dashed land lines indicate approximate locations



CONTOUR INTERVAL 50 FEET  
DATUM IS MEAN SEA LEVEL  
DEPTH CURVES IN FEET-DATUM IS MEAN LOWER LOW WATER  
SHORELINE SHOWN REPRESENTS THE APPROXIMATE LINE OF MEAN HIGH WATER  
THE AVERAGE RANGE OF TIDE IS APPROXIMATELY 4 FEET



ROAD CLASSIFICATION  
Heavy-duty 4 LANE 6 LANE Light-duty  
Medium-duty 4 LANE 6 LANE Unimproved dirt  
U. S. Route State Route

CRESCENT CITY, CALIF.-OREG.  
N4145-W12400/15  
1952

THIS MAP COMPLIES WITH NATIONAL MAP ACCURACY STANDARDS  
FOR SALE BY U. S. GEOLOGICAL SURVEY, FEDERAL CENTER, DENVER, COLORADO OR WASHINGTON 25, D. C.  
A FOLDER DESCRIBING TOPOGRAPHIC MAPS AND SYMBOLS IS AVAILABLE ON REQUEST