

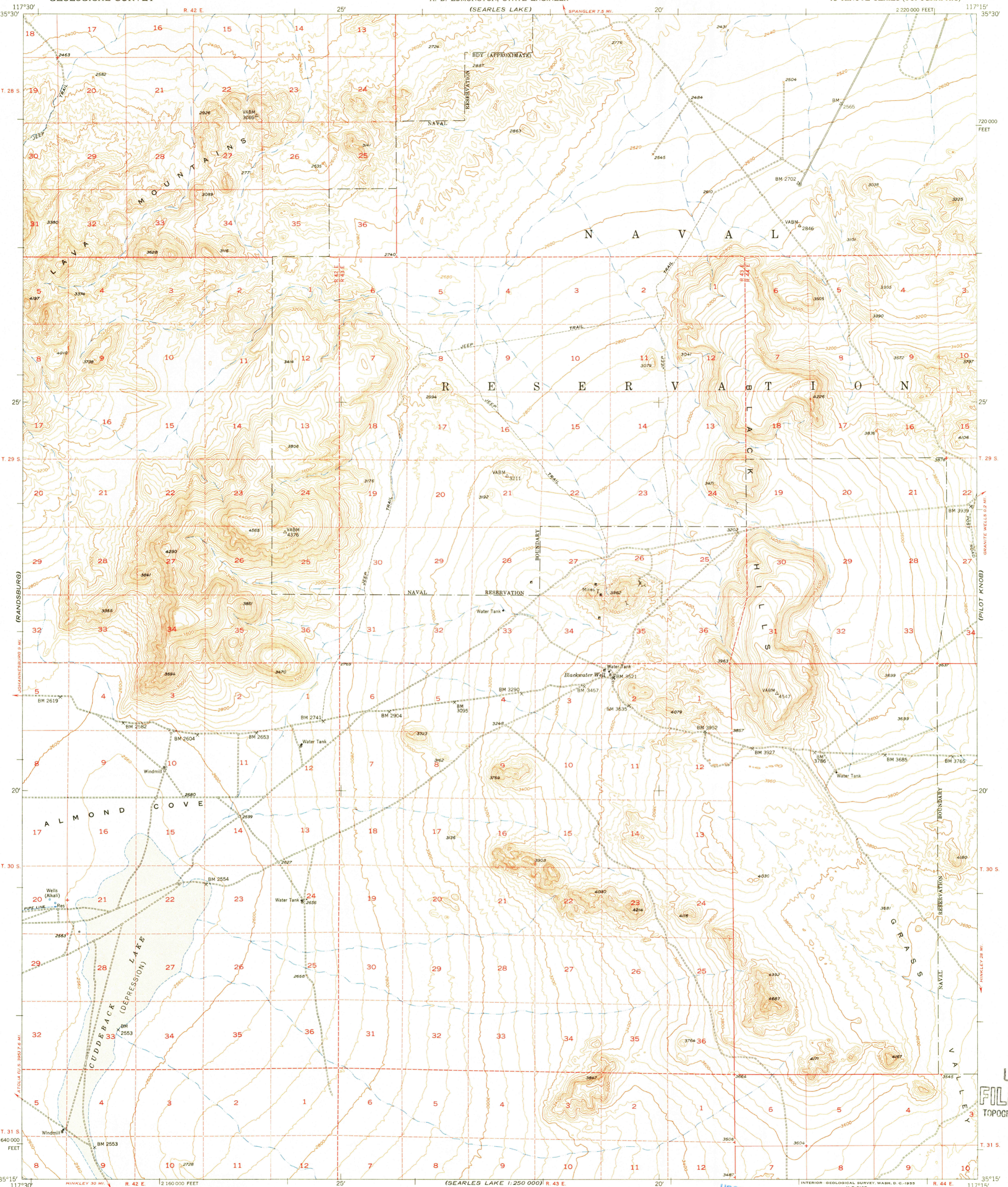
U.S.G.S.
FILE COPY
TOPOGRAPHIC DIVISION

CUDEBACK LAKE QUADRANGLE
CALIFORNIA—SAN BERNARDINO CO.
15 MINUTE SERIES (TOPOGRAPHIC)

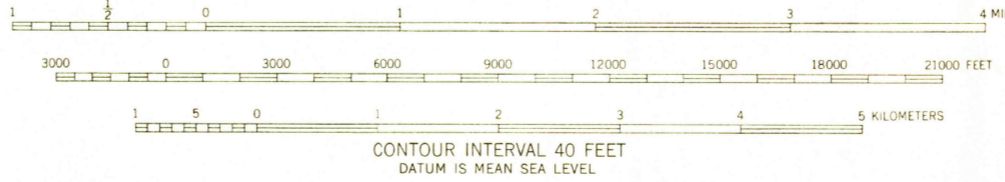
UNITED STATES
DEPARTMENT OF THE INTERIOR
GEOLOGICAL SURVEY

STATE OF CALIFORNIA
GOODWIN J. KNIGHT, GOVERNOR
FRANK B. DURKEE, DIRECTOR OF PUBLIC WORKS
A. D. EDMONSTON, STATE ENGINEER

(SEARLES LAKE)



Mapped, edited, and published by the Geological Survey
Control by USGS, USC&GS, and USCE
Topography from aerial photographs by multiplex methods
and by plane-table surveys 1954. Aerial photographs taken 1950
Polyconic projection. 1927 North American datum
10,000-foot grid based on California coordinate system, zone 5
Dashed land lines indicate approximate locations



ROAD CLASSIFICATION
Heavy-duty 4 LANE 6 LANE Light-duty
Medium-duty 4 LANE 6 LANE Unimproved dirt
U. S. Route State Route

USGS
Historical File
Topographic Division



CUDEBACK LAKE, CALIF.
N3515-W11715/15

1954

THIS MAP COMPLIES WITH NATIONAL MAP ACCURACY STANDARDS
FOR SALE BY U. S. GEOLOGICAL SURVEY, FEDERAL CENTER, DENVER, COLORADO OR WASHINGTON 25, D. C.
A FOLDER DESCRIBING TOPOGRAPHIC MAPS AND SYMBOLS IS AVAILABLE ON REQUEST

U.S.G.S.
FILE COPY
TOPOGRAPHIC DIVISION

OCT 11 1955
3155